


A modern office interior featuring large windows, potted plants, and contemporary furniture. The room includes a desk with a computer monitor, a lounge area with a sofa and ottoman, and a bar area with stools. The floor is covered in a patterned carpet tile.

ETHEREAL *Dreams*

The background of the entire page is a collage of various rug and tile patterns. The patterns include floral motifs, geometric shapes, and abstract designs in muted colors like teal, brown, and blue. The textures appear layered and artistic.

Step into "Ethereal Dreams" — a collection inspired by the timeless elegance of traditional rugs, seamlessly reimagined for modern interiors. Each tile is a subtle tribute to heritage, translated into contemporary silhouettes and refined textures. With gently muted motifs and layered finishes, this collection brings warmth, character, and artistic sophistication to corporate spaces—marrying legacy with innovation, culture with serenity.

WHERE *Heritage*
MEETS QUIET MODERNITY
BENEATH EVERY STEP

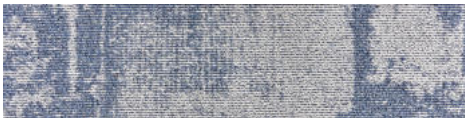


ETHEREAL

Dreams COLOURWAYS



ECRU | CT001953



BLUFLOA | CT001997



SANDAL | CT001954



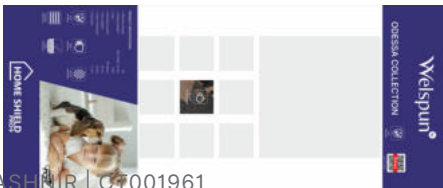
GULNAAR | CT001957



AZUREEN | CT001956



ZARD | CT001955



ASHNIR | CT001961



IRONVEIL | CT001959



VEIL | CT001960



CHARSTONE | CT001958



SAFFRON ASH | CT001962



QUIET LUXURY

Grounded in rich, earthy browns, the Ethereal Dreams collection captures a sense of calm and grounded strength. The textured patterns whisper quiet, understated effortless sophistication—inviting warmth, depth, and a touch of timeless charm.





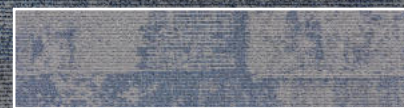
WOVEN CALM

Blending traditional inspiration with modern restraint, this chapter introduces calm through woven impressions. Patterns emerge gently, never bold, yet deeply rooted. It's where the artistry of the past flows seamlessly into the present. Crafted for spaces that value clarity, balance, and cultural depth.

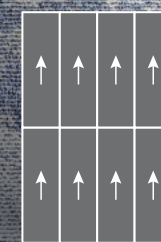




Patterns THAT
WHISPER OF TIME AND TOUCH.



ASHNIR | CT001961



MONOLITHIC

This image is for illustration purposes only. The actual product appearance may vary.

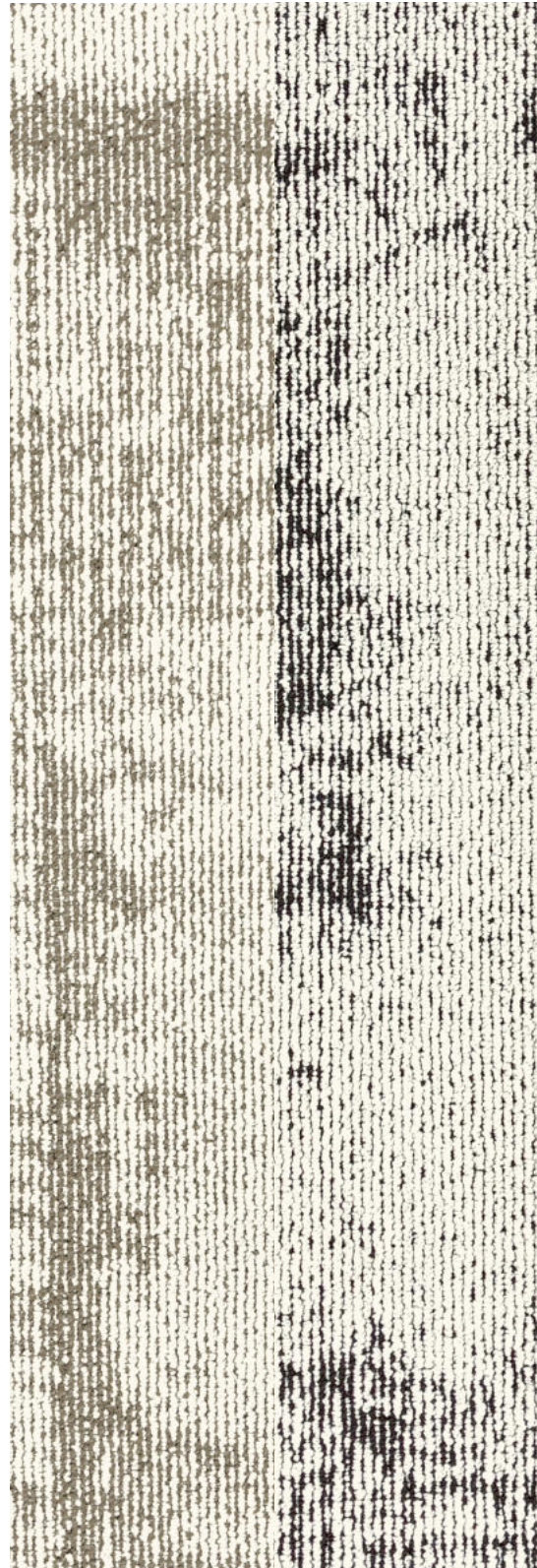


HERITAGE VEIL

These designs bring tradition to life with the lightest touch.

Rug-inspired forms appear like shadows - subtle, airy, meaningful.

Perfect for spaces seeking depth without heaviness, they celebrate cultural richness while maintaining the clean elegance of today's interiors.



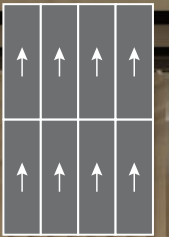
Silhouettes OF MEMORY.
LAID WITH INTENTION.



ECRU | CT001953



SANDAL | CT001954



MONOLITHIC



SOFT LEGACY

A celebration of elegance in restraint, this chapter embraces the silhouettes of ornate rug motifs, worn and weathered by design. The understated beauty lies in its imperfection faded lines, delicate whispered textures that turn corporate spaces into soulful, story-rich modern environments.



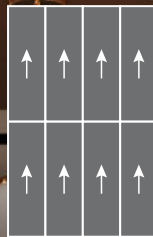
Old-world MOTIFS.
REIMAGINED FOR TODAY.



CHARSTONE | CT001958



ASHNIR | CT001961



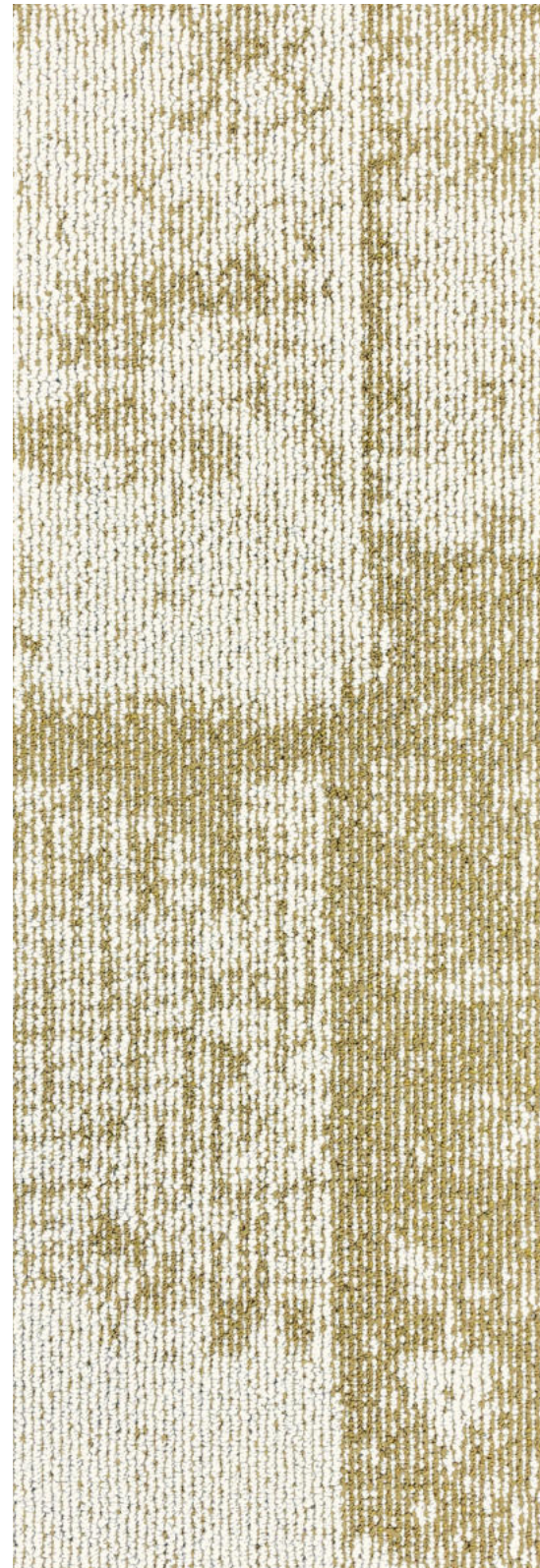
MONOLITHIC





GENTLE BLISS

Here, every tile holds a softened recollection, distressed yet deliberate. Traditional motifs dissolve into abstract layers, inviting a connection to what once was. It's a tactile nod to heritage, offering character without chaos, and history without weight, all within a contemporary design visual language.

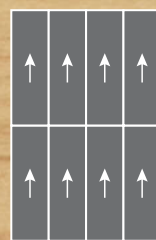




Shadows OF CULTURE
ETCHED IN QUIET ELEGANCE.



ZARD | CT001955



MONOLITHIC

This image is for illustration purposes only. The actual product appearance may vary.



FADED GRACE

Ornate details appear like timeworn memories – graceful, weathered, and intentional. With low contrast and delicate layering, this quiet section evokes quiet elegance. It subtly bridges the old and the new, allowing heritage to exist softly, like timeless grace that lingers just beneath the surface.





Trace A SOFTENED GAZE
INTO CENTURIES OF CRAFT.



SAFFRON ASH | CT001962



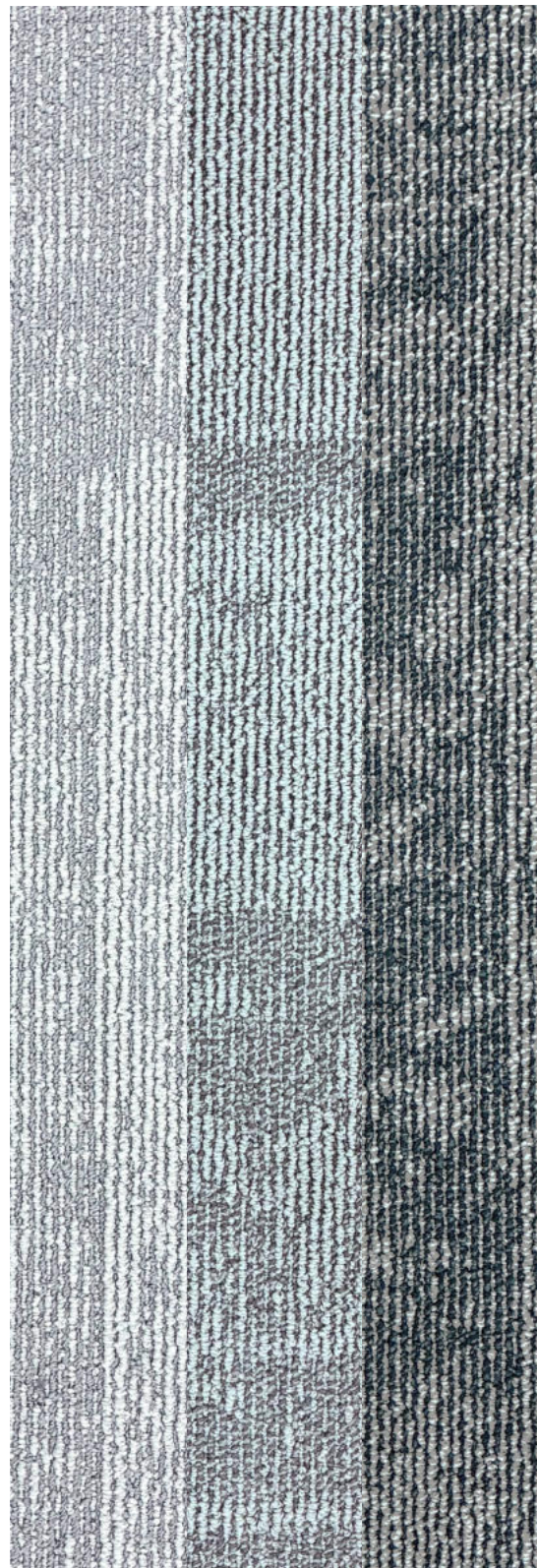
MONOLITHIC

This image is for illustration purposes only. The actual product appearance may vary.



SILENT ECHO

Traditional rug patterns
return as whispers –
faint, textured
impressions across the
tile. These softened
echoes bring warmth to
modern spaces,
reminding us that design
need not shout to be
felt. Each step resonates
with the subtle power of
cultural memory and
artisanal craftsmanship.





Borders FADE.
BUT BEAUTY REMAINS.



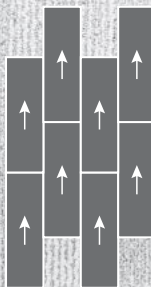
VEIL | CT001960



CHARSTONE | CT001958



IRONVEIL | CT001959



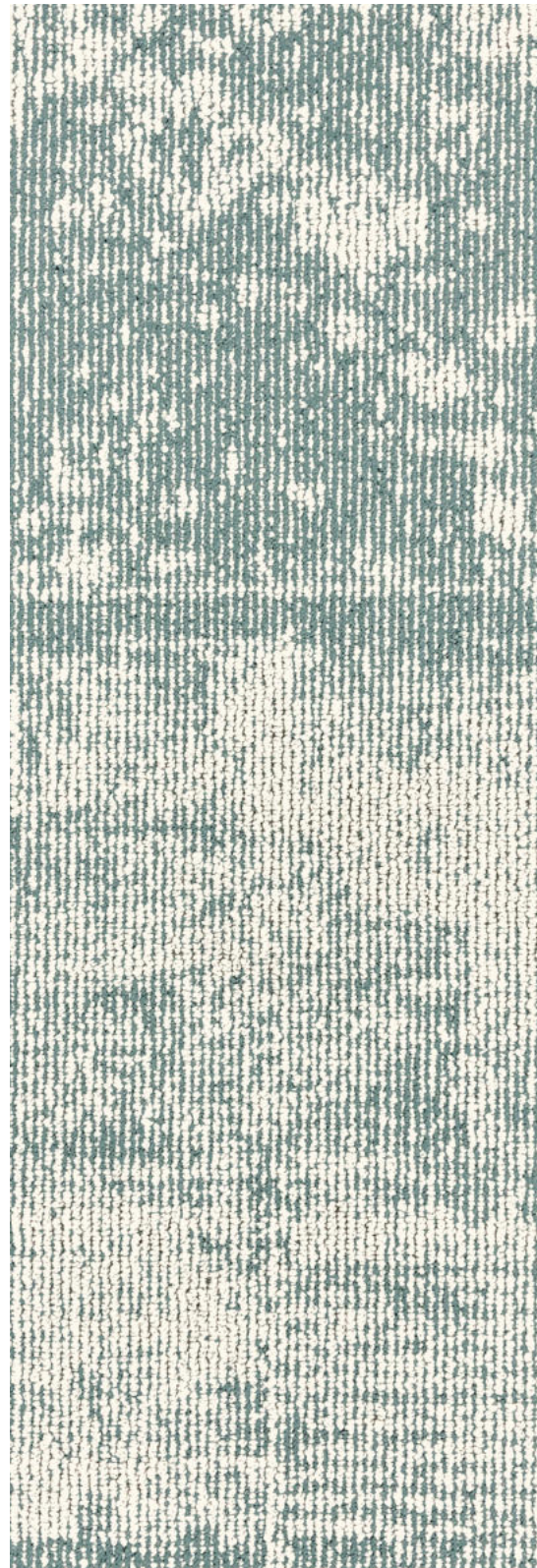
BRICK

This image is for illustration purposes only. The actual product appearance may vary.



CRAFTED TIME

Rooted in centuries of craft, this section reimagines the essence of traditional rug artistry through a modern lens. With softened details & layered textures, patterns evoke a quiet sophistication where each tile becomes a muted echo of cultural richness, translated into contemporary form.



Since its inception in 1985, the Welspun Group has been committed to making India proud globally through its superior quality and innovative products and services. Its brilliant addition, Welspun Flooring, now has a modern manufacturing facility spread over an impressive 300 acres with an investment of more than 1150 cr. A break through in engineering and design, Welspun Flooring brings you a unique meeting of form and function in each collection. This distinctive quality appeals to Architects, Designers, Retailers and Consumers, offering them holistic flooring solutions that spur creative thinking and an elevated sense of design.

TEST REPORT SUMMARY

Test Name	Method	Test Name	Method
Anti Microbial Treatment	AATCC 174 (Part II & III)	Colour fastness to bleach	AATCC 6
Delamination	ASTM D 3936	Static Electricity	AATCC 134-1996
Tuft Bind	ASTM 1335-67	Anti Static	ANSI/ESD S 7.1
Dimensional stability	ASTM D 7570	Castor Chair	DIN 54324
Pile weight	ASTM D 5848-07	Hexapod	ASTM D 5252-15
Pile density	ASTM D 5848-07	Static Coefficient	ASTM C 1028
Total thickness	ASTM D 6988-08	Dimensional stability (Aachen test)	DIN-STD-54318/ITTS-004
Pile height	ASTM D 5823-05a	Anti Soil	ASTM D 6540-05
Gauge	ASTM D 5793-13	Shampoo Fastness	AATCC 138
Tuft density	ASTM D 5848	Water Fastness	AATCC 107
Flammability (Pill Test)	ASTM D 2859	Velcro-Loops	ITTS 112
Flammability (Radiant Panel)	ASTM E 648-06	Heavy Traffic test (Walk test)	ASTM 6119-03
NBS Smoke Density (Flaming)	ASTM E 662-06	Sound transmission	ASTM C 423-17
Lightfastness	AATCC 16 E	Sound Absorption	ASTM C 423-17
Colour fastness to Ozone	AATCC 129	Static Loading	ISO 015/3415
Colour fastness to NO ₂	AATCC 164-2008	Green Carpet (VOC)	ASTM D 5116
Crocking Dry and Wet	AATCC 165-2008	Acoustic	BS EN ISO 354
Stain fastness	AATCC 175-2008/ITTS 002	Thermal Resistance	ASTM C 518

TRADEMARKS & TECHNOLOGIES



NY6+™
For colours that don't fade out, Welspun Floorings Ny6+™ is made up of a highly resilient fiber that is known for its superior color retention, strength, stain and fade resistance. With all this, your floor always retains its beauty come what may.



Welspun Ecolite™
Welspun Ecolite™ backing are made up of lightweight PVC that not only reduces the overall weight significantly but ensures a 40% less environment footprint than traditional carpets. Despite that, this backing retains the highest performance standards.



Comfortile+™ (Optional)
With Comfortile+™, enjoy the most superior levels of safety, underfoot comfort and sound absorption. Equipped with a cushion back that is 20% more thicker, Comfortile+™ decreases sound reflection by 25% compared to hard back enabling you to enjoy quieter spaces which leads to better health.

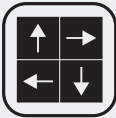


HealthyFloor™ (Optional)
We also have carpet tiles options with antiviral property. Tested and certified by Reslnnova labs, we are the first company in India to offer antiviral carpet tiles. It eliminates 99.68% of virus thanks to a special coating of silver ion & titanium oxide.

FEATURES



Nylon Tufted Product



Multiple Design Possibilities



Easy To Install



Reduces Wastage During Installation



Easy To Maintain



Stain Resistance



Fade Resistance



Ideal For Heavy Foot Traffic



PRODUCT SPECIFICATIONS IN CARPET TILES

Guage/Machine Yarn	1/12 Infinity
Size (cm)	100% Solution Dyed Nylon (NY6+)
Pile Height (mm)	25x100 cm
Total Thickness (mm)	3-4 mm
Density	6 mm
SPI	6270
Tufting Weight (Oz)	11
Backing System	24 Oz
Indicates	Welspun Ecolite or Comfortile
	+/- 5%

*Indicates +/-5%

CERTIFICATIONS									



**EVERY HOME TO
EVERY HEART
WELSPUN**

— #HarDilWelspun —

Address :

Welspun Global Brands Ltd, Survey No 190, Chandanvelly, Near Hythabad,
Shabad Mandal, Ranga Reddy District, Telangana 501503, India

1800-120-1161

India : contact_flooring@welspun.com

Global : global_saleswfl@welspun.com

www.welspunflooring.com



↓ E-LOOKBOOK