

Rangana[®]

*A tribute to the beautiful
art forms of India.*

WELSPUN GLOBAL BRANDS LTD,
Survey No. 190, Chandanvelly, Near Hythabad,
Shabad Mandal, Ranga Reddy (Dist),
Telangana 501503, India

Contact US : 1800-120-1161
India : contact_flooring@welspun.com
Global : global_saleswfl@welspun.com
www.welspunflooring.com

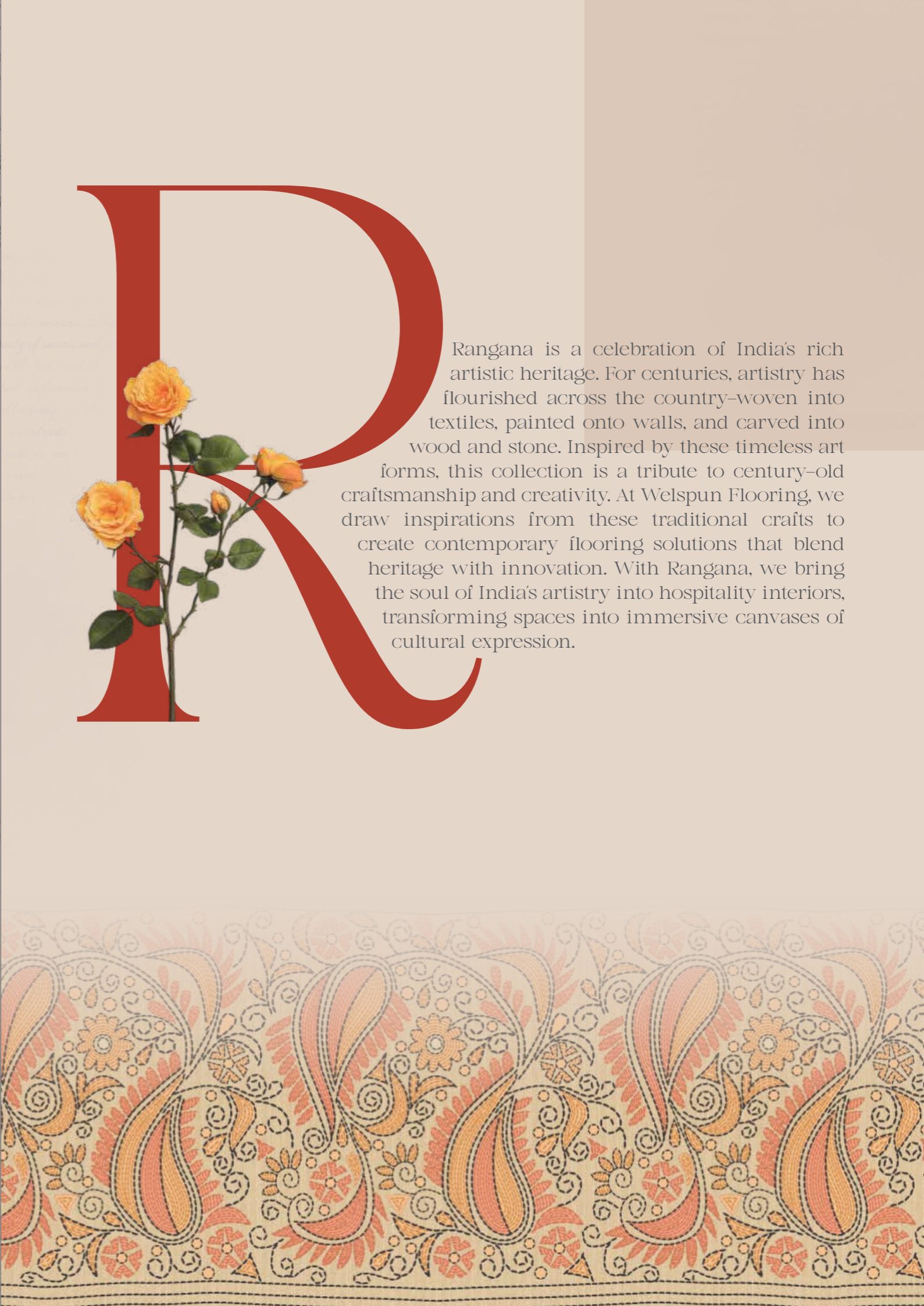


↓ E-LOOKBOOK



Rangana is where ancient
artistry inspires new creation,
a vibrant dance of tradition and
design unfolding in every detail.





Rangana is a celebration of India's rich artistic heritage. For centuries, artistry has flourished across the country—woven into textiles, painted onto walls, and carved into wood and stone. Inspired by these timeless art forms, this collection is a tribute to century-old craftsmanship and creativity. At Welspun Flooring, we draw inspirations from these traditional crafts to create contemporary flooring solutions that blend heritage with innovation. With Rangana, we bring the soul of India's artistry into hospitality interiors, transforming spaces into immersive canvases of cultural expression.



Mahua

Inspired by the rich visual storytelling tradition of Gond Art, this collection reflects the deep-rooted heritage of the Gond tribe from central India. With intricate patterns and vibrant natural hues, it brings to life tales of nature, folklore, and mythology. Celebrating the essence of this centuries-old art form, the collection offers a contemporary interpretation of its timeless beauty.

Mahua
transforms spaces with
its rhythmic, geometric beauty.



Stories unfold
in rhythmic strokes and bold colours.

WF1229



WF1229-001



WF1229-002



WF1229-003

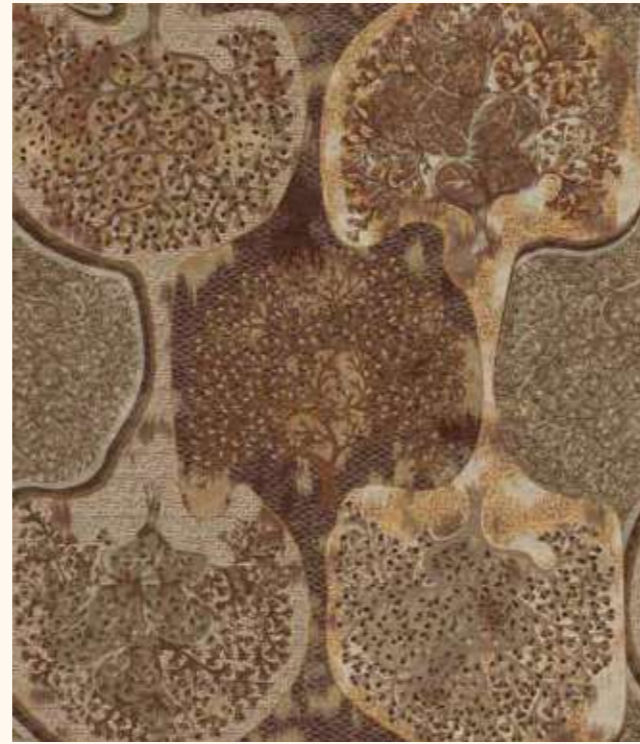
SIZE : 4 X 4.5 MTRS



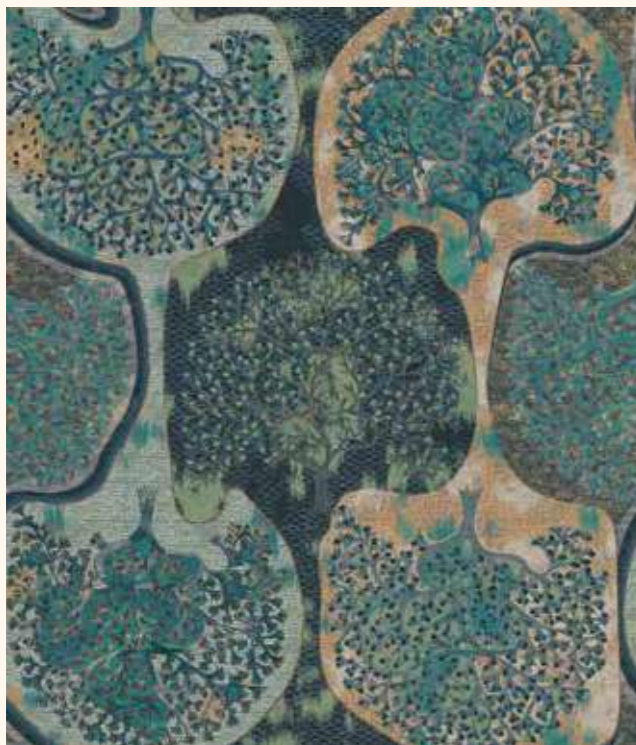
WF1229-003

Echoes of tradition,
preserved in every brushstroke.

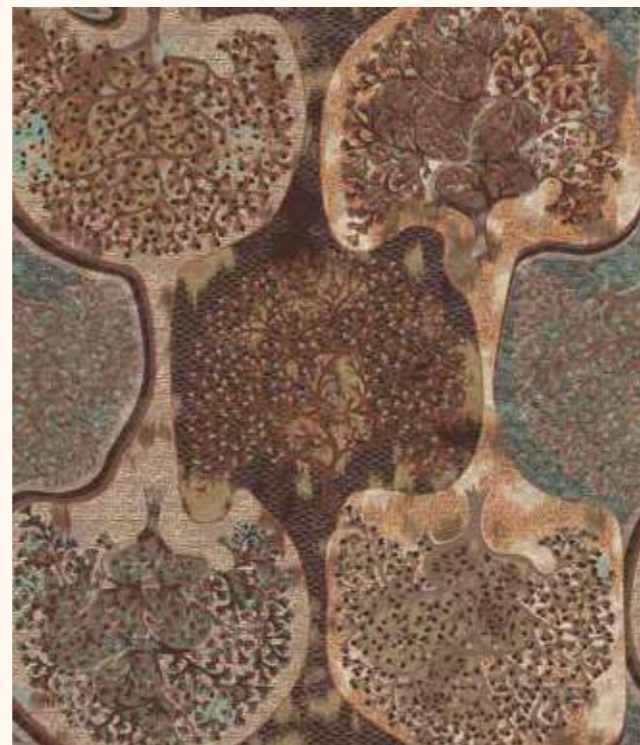
WF1230



WF1230-001



WF1230-002



WF1230-003

SIZE : 4 X 4.7 MTRS



WF1230-001



WF1230-001

Art that sings,
dances, and narrates a legacy.

A canvas of culture,
painted in vibrant hues.

WF1231



WF1231-001

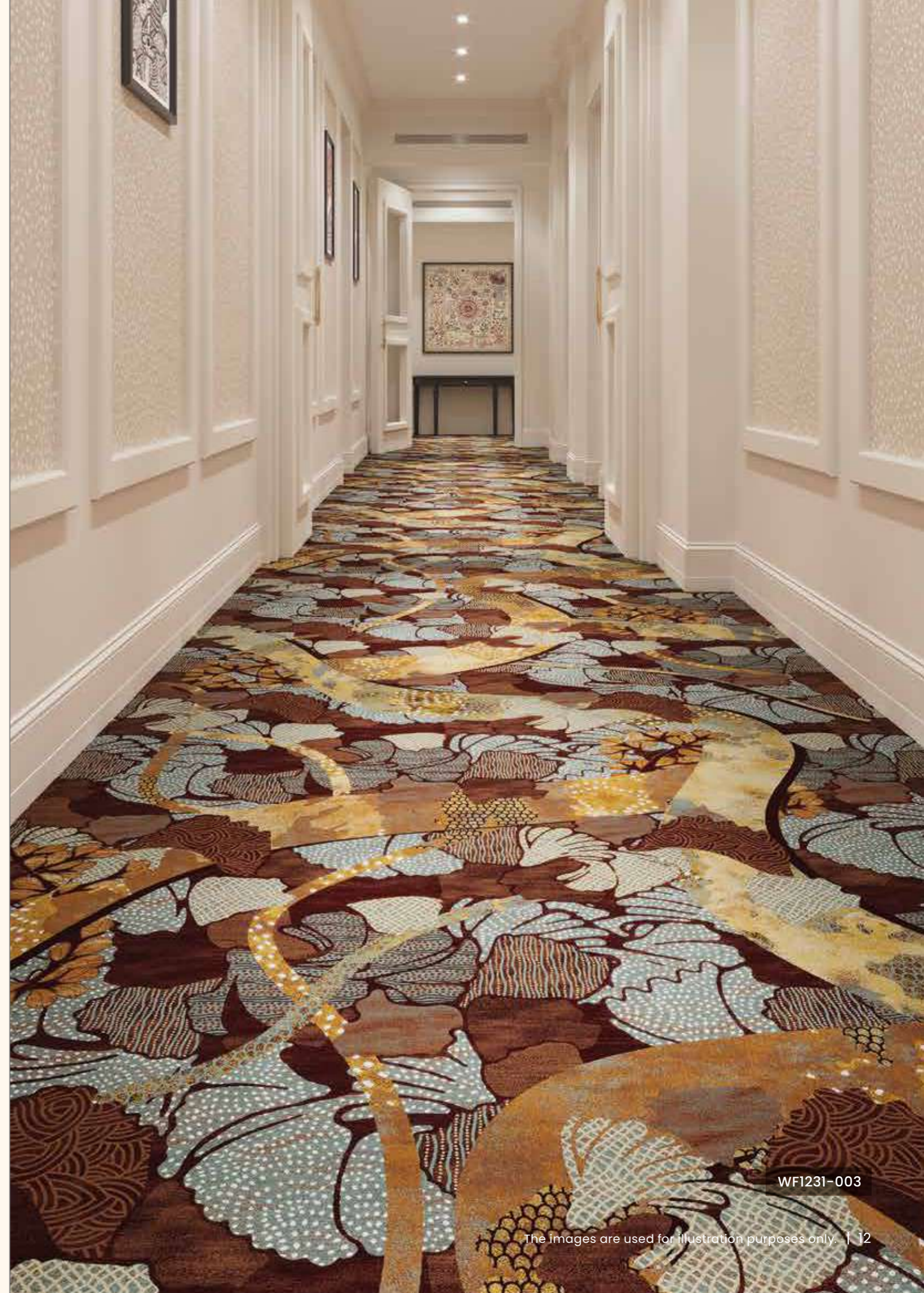


WF1231-002



WF1231-003

SIZE : 2 X 4 MTRS



WF1231-003

Nature's essence,
immortalized in vibrant patterns.

WF1232



WF1232-001

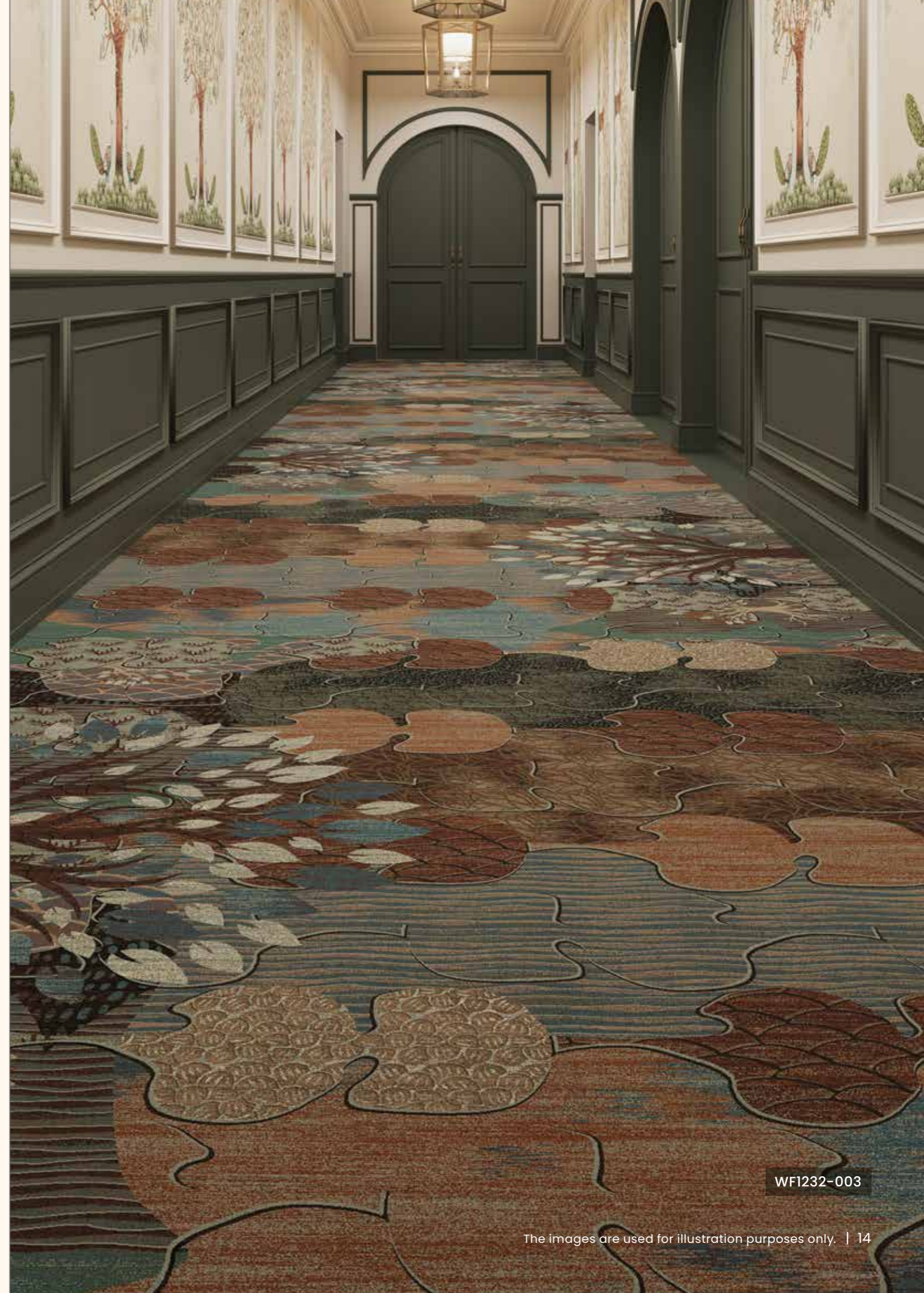


WF1232-002



WF1232-003

SIZE : 2 X 4 MTRS



WF1232-003

Every pattern,
a tribute to the earth's beauty.

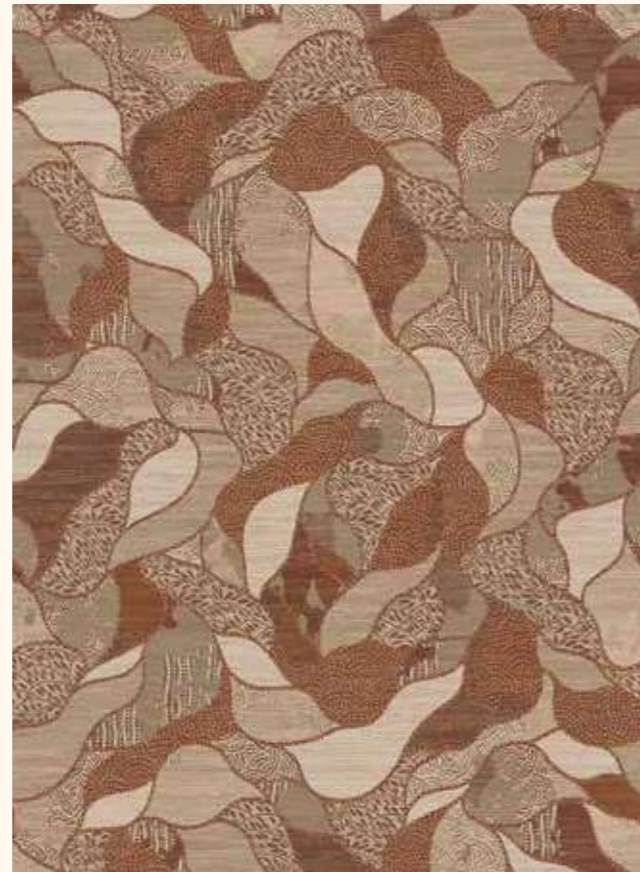
WF1233



WF1233-001



WF1233-002



WF1233-003

SIZE : 2 X 3 MTRS



WF1233-003



WF1233-003

Forest's pulse,
boldly painted in vivid detail.

Ancient wisdom
meets artistic expression.

WF1234



WF1234-001



WF1234-002



WF1234-003

SIZE : 2 X 4 MTRS



WF1234-002



Sutanuti

is a tribute to the timeless artistry of Kantha, where every stitch tells a story.

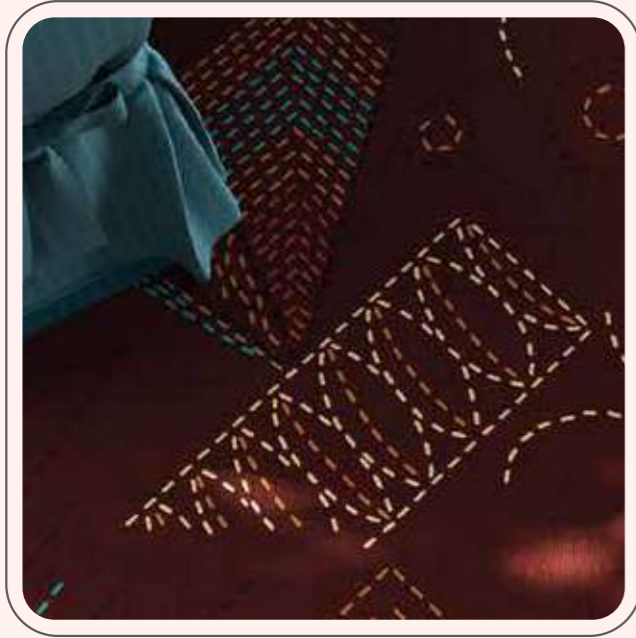
Sutanuti

Rooted in heritage, Sutanuti reimagines the timeless art of Kantha embroidery, one of India's oldest crafts. Originating in the pre-Vedic era, its delicate running stitches once formed flowing patterns of floral, animal, and geometric motifs. While honoring the essence of this intricate tradition, this collection offers a contemporary interpretation inspired by its rich legacy.

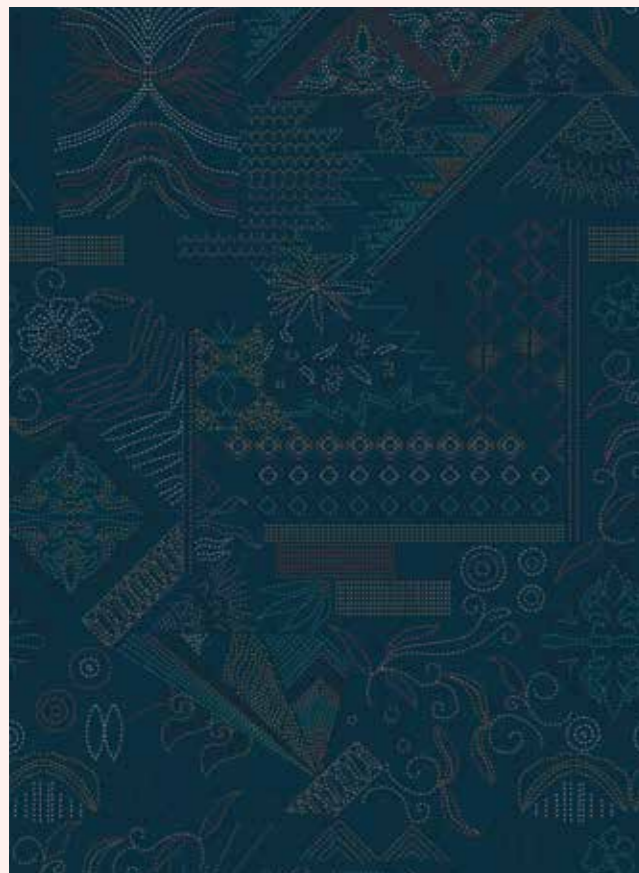


Fabric of emotions,
stitched with memories.

WF1235



WF1235-001



WF1235-002



WF1235-003

SIZE : 4 X 6 MTRS



WF1235-003



WF1235-003

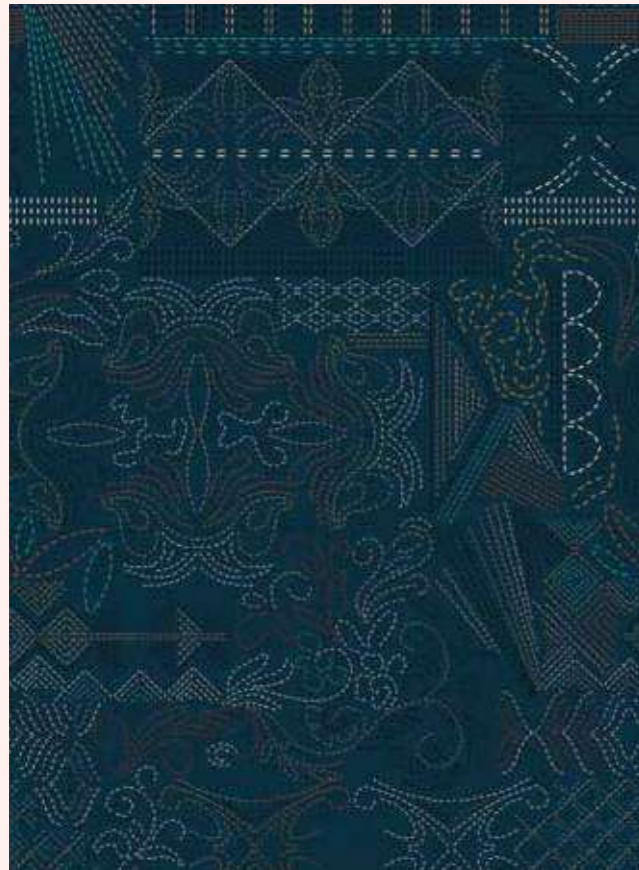
Flowing stitches,
timeless elegance.

From ceremonies
to heirlooms, Kantha endures.

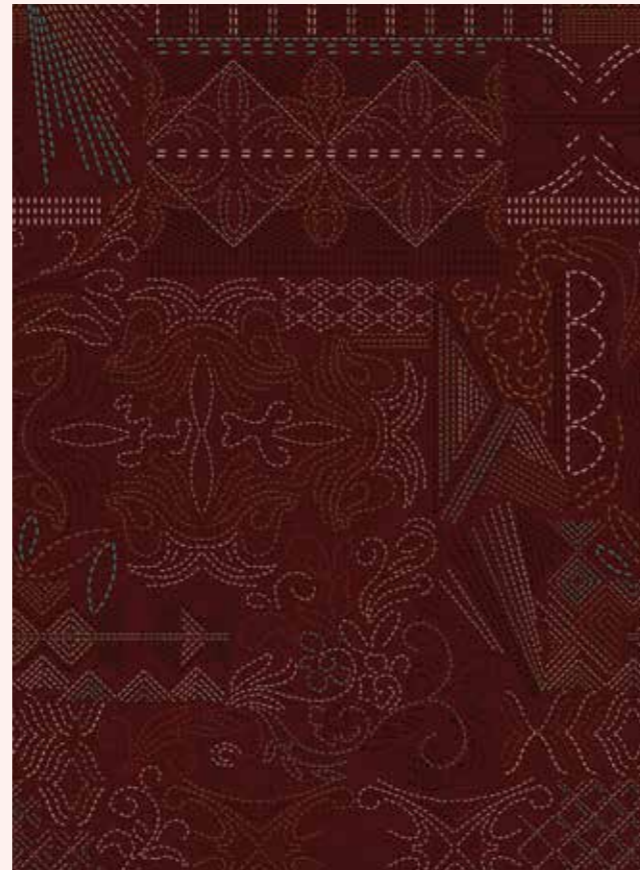
WF1236



WF1236-001

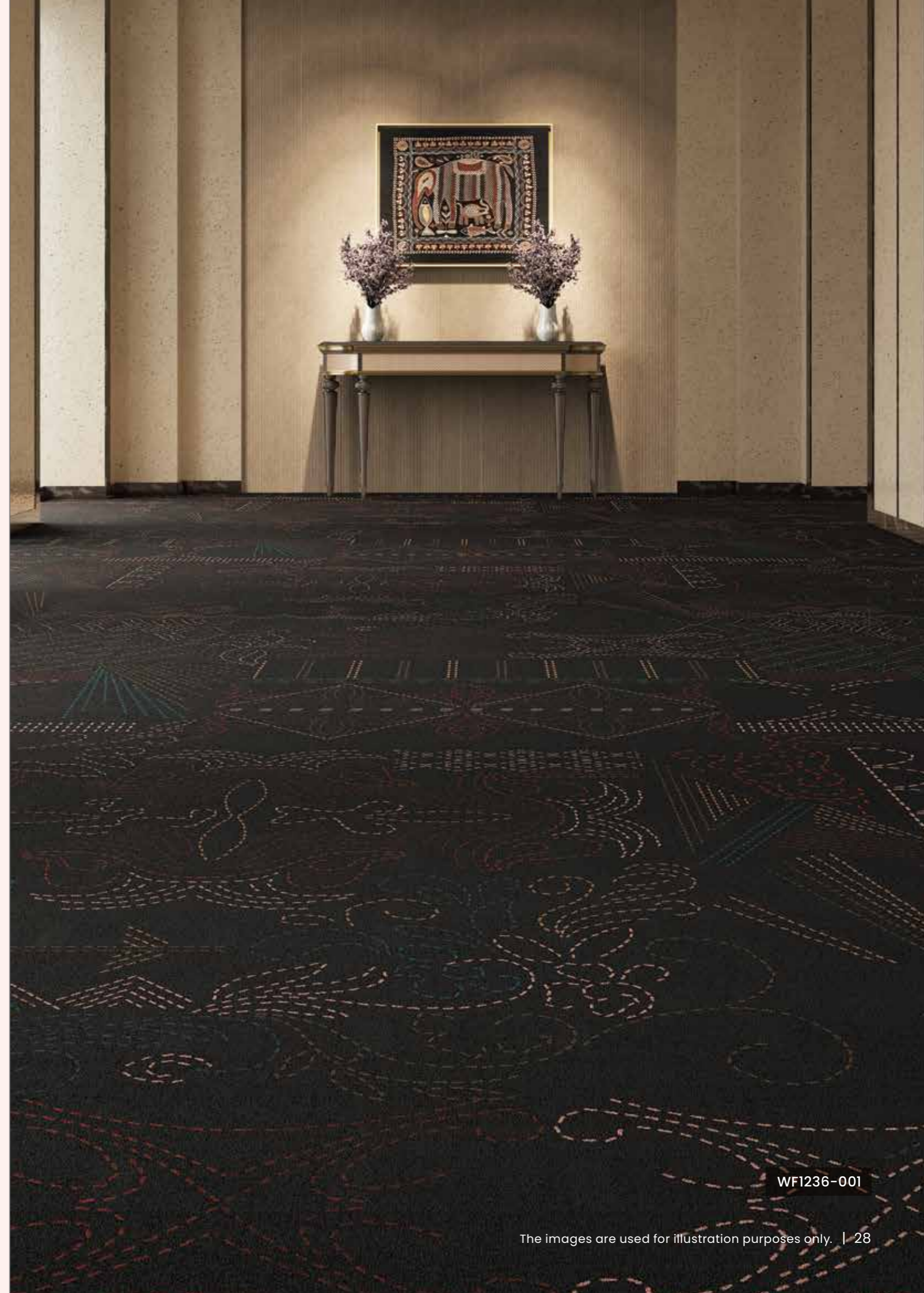


WF1236-002



WF1236-003

SIZE : 2 X 3 MTRS



WF1236-001

Waves of tradition,
sewn into every motif.

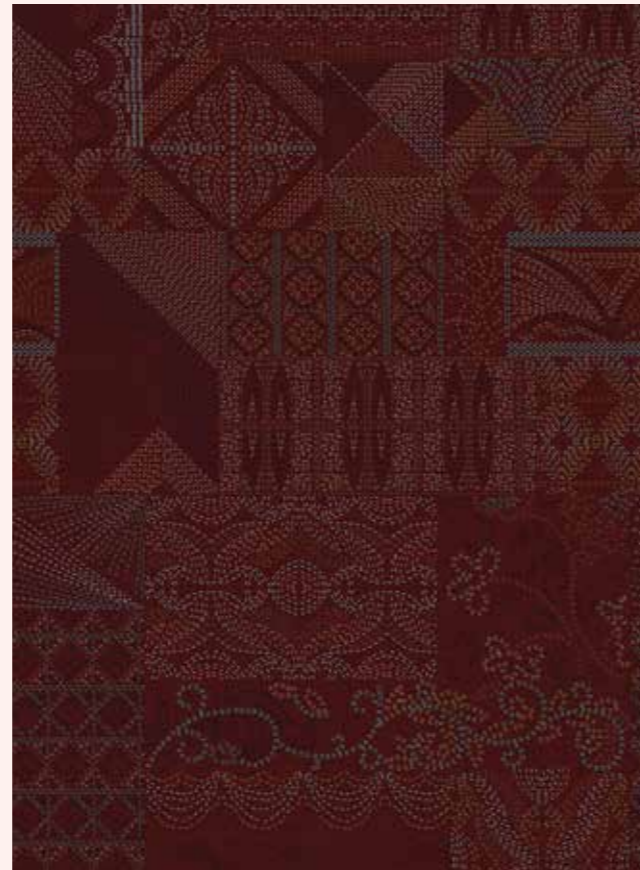
WF1237



WF1237-001

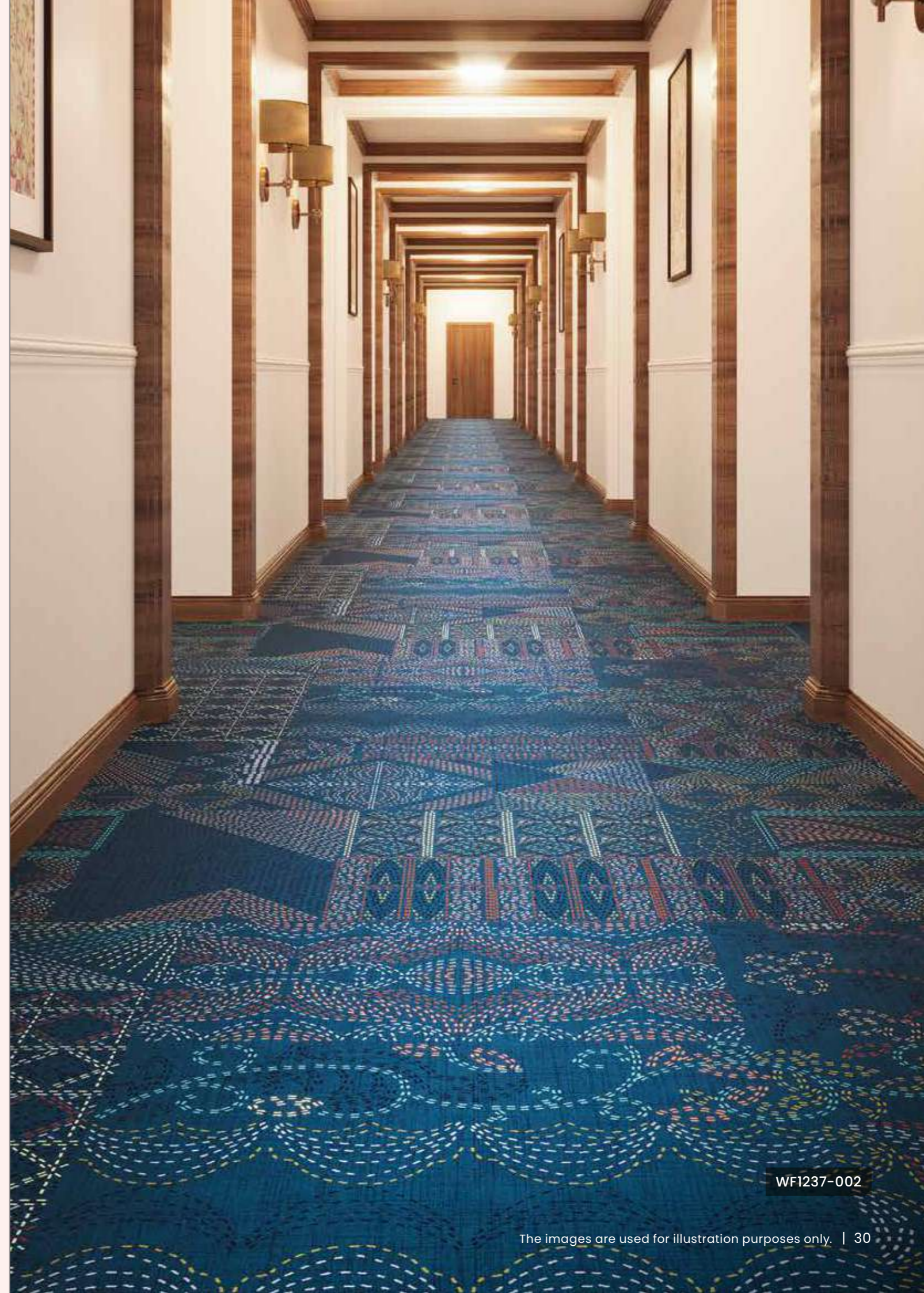


WF1237-002



WF1237-003

SIZE : 2 X 3 MTRS



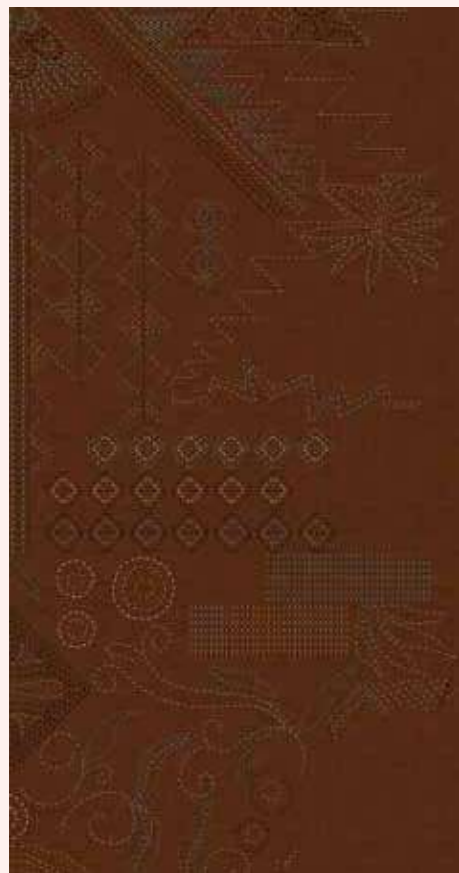
WF1237-002

Fabric of emotions,
stitched with memories.

WF1238



WF1238-001

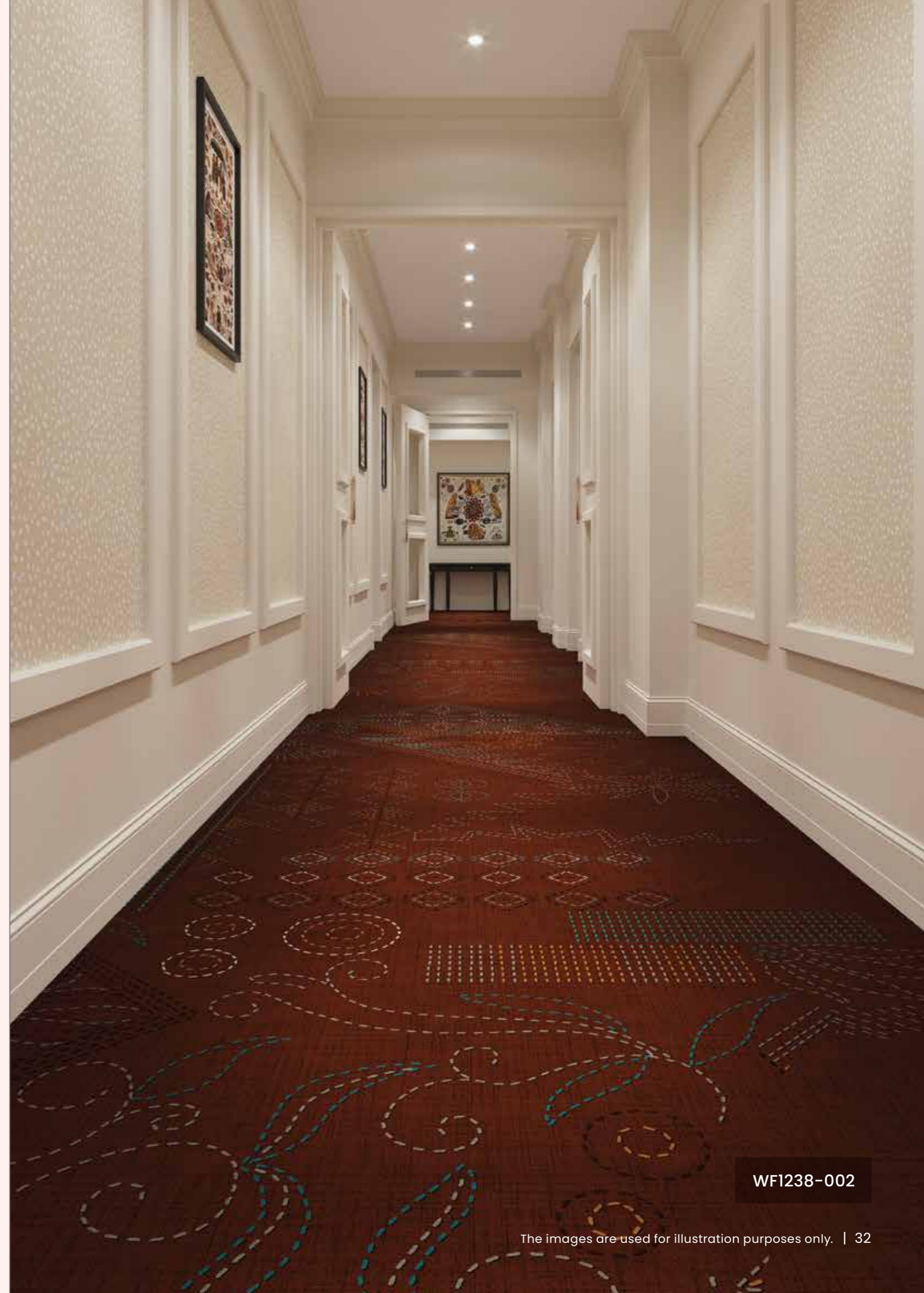


WF1238-002



WF1238-003

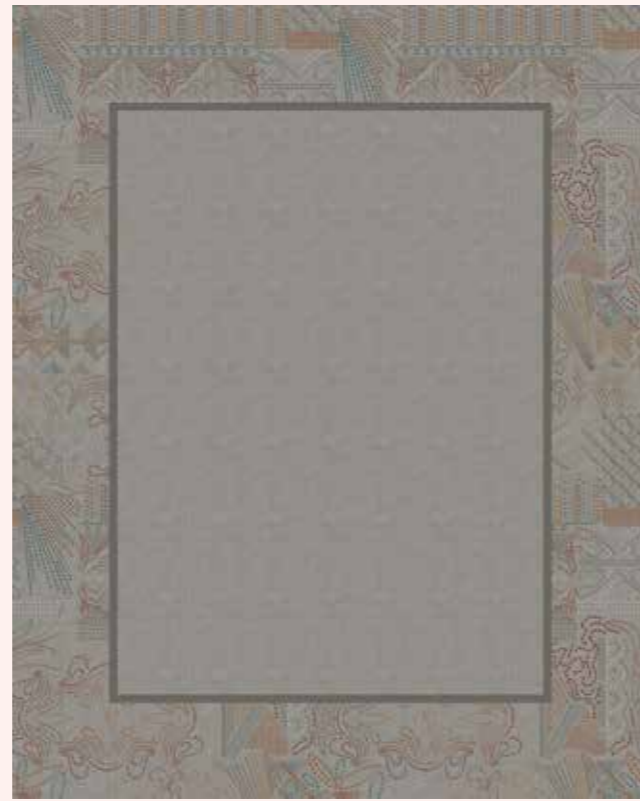
SIZE : 2 X 5.8 MTRS



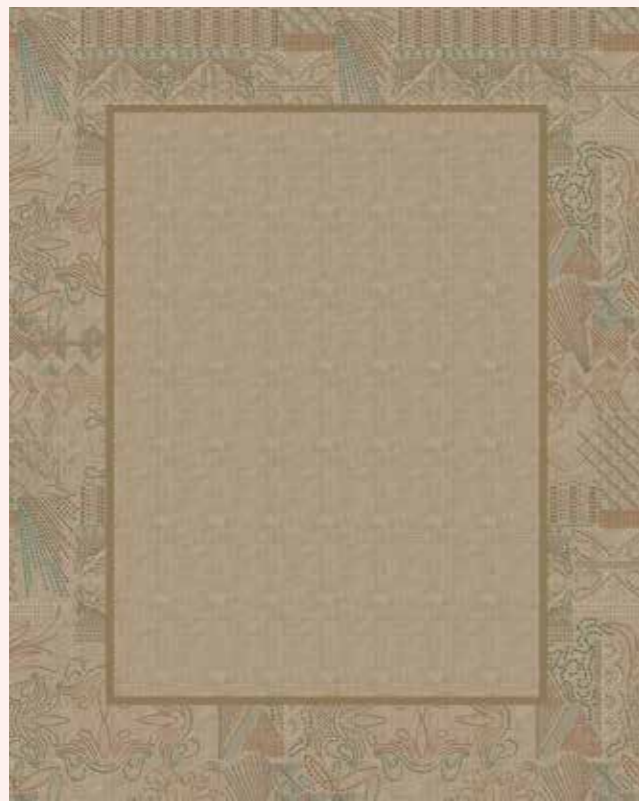
WF1238-002

Threads of tradition,
woven with stories of the past.

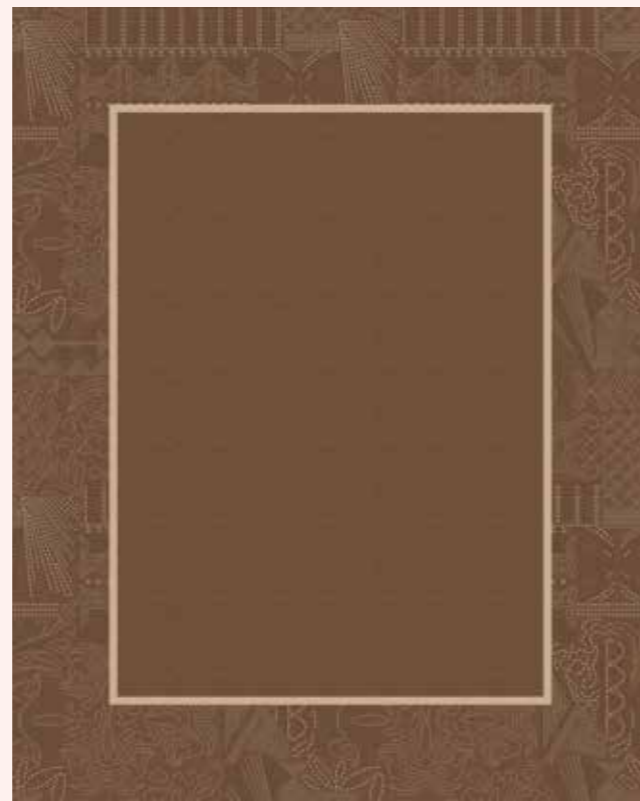
WF1239



WF1239-001



WF1239-002



WF1239-003

SIZE : 4 X 5 MTRS



WF1239-002

Delicate stitches,
strong cultural roots.

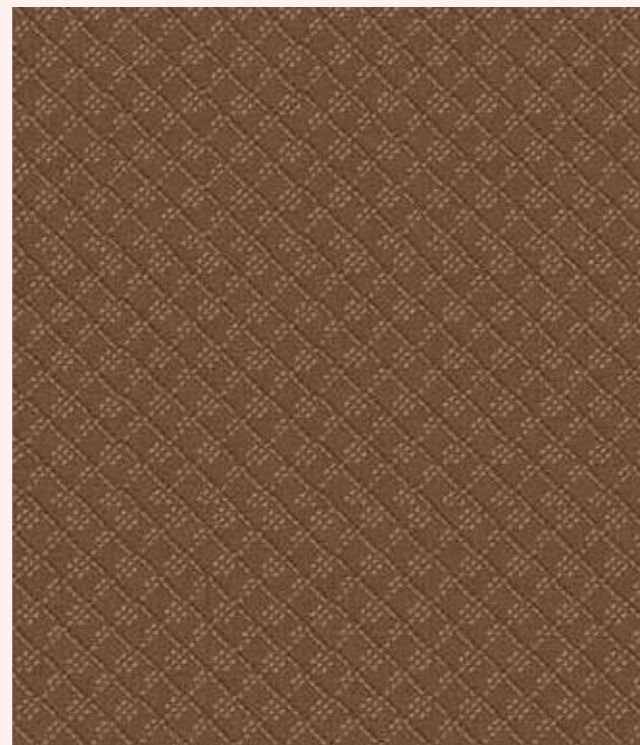
WF1240



WF1240-001



WF1240-002



WF1240-003

SIZE : 2 X 1.8 MTRS



WF1240-002



WF1240-002

Embroidery art
that outlives time and trends.



Shalimar

Drawing inspiration from the exquisite craftsmanship of Kashmiri papier-mâché, the Shalimar collection reflects the artistic heritage introduced by Mir Sayyid Ali Hamadani in the 14th Century. Once adorning royal homes, this intricate art form is renowned for its delicate floral motifs and hand-painted elegance. Honoring its timeless beauty, the collection offers a contemporary interpretation, capturing the essence of papier-mâché artistry in a modern expression of tradition.

Shalimar

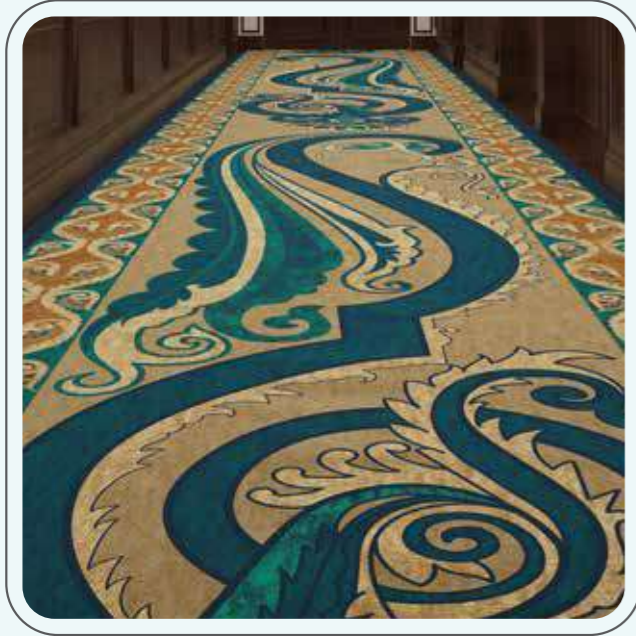
is where history, art, and nature bloom
in timeless harmony.



Floral symphonies

etched in timeless craft.

WF1241



WF1241-001

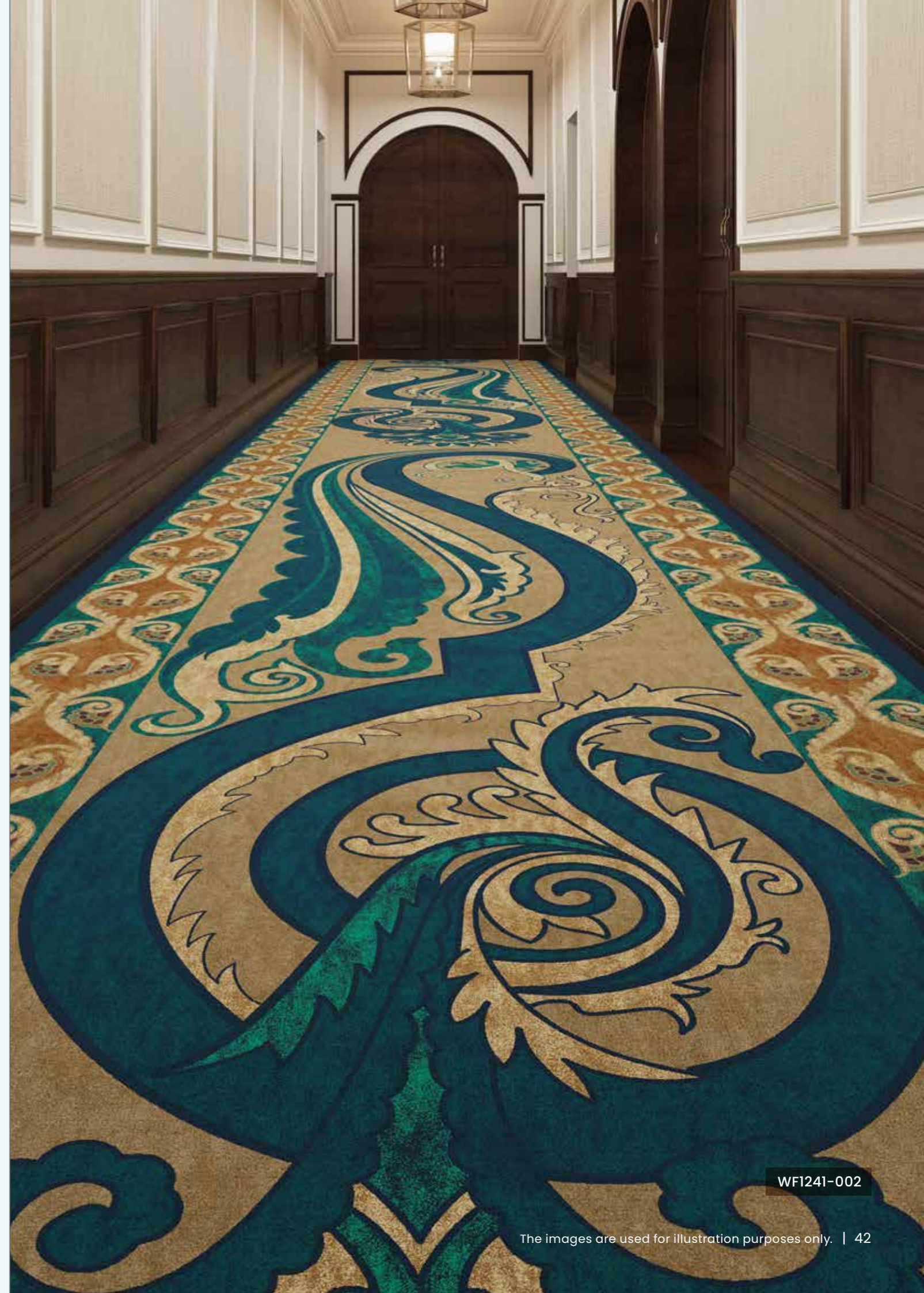


WF1241-002



WF1241-003

SIZE : 2 X 11.5 MTRS



WF1241-002



WF1241-002

History molded,
painted, and preserved.

Every brushstroke,
a tribute to rich heritage.

WF1242



WF1242-001



WF1242-002



WF1242-003

SIZE : 2 X 4.6 MTRS



WF1242-001

Art and heritage bloom together.

WF1243



WF1243-001



WF1243-002



WF1243-003

SIZE : 4 X 4 MTRS



WF1243-002



WF1243-002

Every pattern,
a whisper legacy from the past.

History molded,
painted, and preserved.

WF1244



WF1244-001



WF1244-002



WF1244-003

SIZE : 2 X 2.3 MTRS



WF1244-001

Echoes blossoming
in every stroke.

WF1245



WF1245-001



WF1245-002



WF1245-003

SIZE : 2 X 2.3 MTRS



WF1245-002



WF1245-002

Handcrafted art,
inspired by nature's poetry.

Hands of artisans to the heart of your home.

WF1246



WF1246-001



WF1246-002



WF1246-003

SIZE : 2 X 2.3 MTRS



WF1246-003

Product Specification

Fiber	100% Polyamide 6
Product Type	Cut & Loop
Pile (GSM)	590 to 1500
Total (GSM)	1776 to 2686
Pile Height (mm)	7 to 10
Tufting Type	1/8 & 1/10
Indicates	+ -5%

*All design Colors are indicative. Please refer to the actual products for exact colors.

Test Report Summary

Test Name	Method	Test Name	Method
Anti Microbial Treatment	AATCC 174 (Part II & III)	Flammability (Pill Test)	ASTM D 2859
Delamination	ASTM D 3936	Flammability (Radiant Panel)	ASTM E 648-06
Tuft Bind	ASTM 1335-67	NBS Smoke Density (Flaming)	ASTM E 662-06
Castor Chair	DIN 54324	Lightfastness	AATCC 16 E
Pile weight	ASTM D 5848-07	Colour fastness to Ozone	AATCC 129
Pile density	AST D 5848-07	Colour fastness to NO,	AATCC 164-2008
Hexapod	ASTM D 5252-15	Crocking Dry and Wet	AATCC 165-2008
Pile height	ASTM D 5823-05a	Stain fastness	AATCC 175-2008/ITTS 002
Gauge	ASTM D 5793-13	Shampoo Fastness	AATC 138
Static Electricity	AATCC 134-1996	Water Fastness	AATCC 107
Green Carpet (VOC)	ASTM D 5116		

Our Products Are Compliant With Global Standards



Rangana[®]
A tribute to the beautiful art forms of India.

