

WHISPERING TERRAIN

WELSPUN GLOBAL BRAND LTD,
Survey No. 190, Chandanvelly, Near Hythabad,
Shabad Mandal, Ranga Reddy (Dist),
Telangana 501503 India

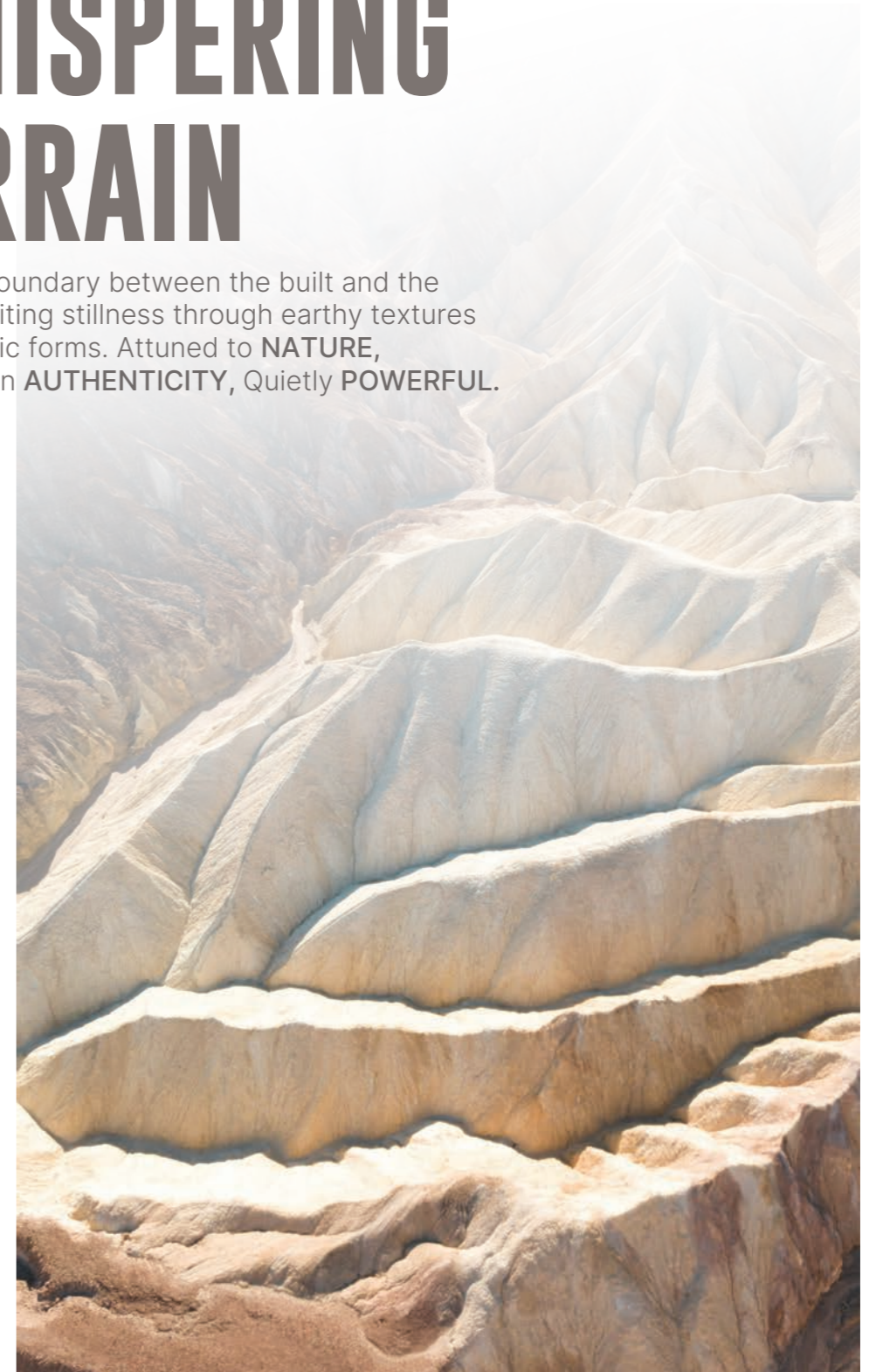
Contact Us: 1800 - 120 - 1161
India: Contact_flooring@welspun.com
Global: Global_saleswf@welspun.com
www.welspunflooring.com



↓ E-lookbook

WHISPERING TERRAIN

blurs the boundary between the built and the natural, inviting stillness through earthy textures and biophilic forms. Attuned to **NATURE**, Grounded in **AUTHENTICITY**, Quietly **POWERFUL**.



There was once a quiet yearning, a pull to return to something older, something rooted. From that stillness came Whispering Terrain, a design story shaped not by the urge to mimic nature, but by the deep need to listen to it.

It began with the view from above: rivers winding like ink across parchment, ridgelines folded like timeworn maps, forests breathing beneath a canopy of green. The land spoke in contours and shadows, in the hush of dusk and the warmth of sunlit clay.

Inspired by these whispers, the designer traced soft, flowing lines—echoes of terrain, memory, and movement. Forms followed the language of the land: the slow bend of a river, the curve of a hillside worn smooth by time. Nothing rigid. Nothing forced. Only the kind of symmetry found in wild things. Rust, like sunlit clay underfoot. Slate grey, the hush of weathered stone. Blue, pulled from deep skies and shadowed water. Taupe, soft as dry earth crumbling between fingers. Each hue was gathered from the land itself. Textures spoke in their own way: bark under curious touch, stone holding warmth, wind tracing patterns in sand. Rooms became places of quiet immersion, where the indoors breathed with the rhythm of the outside world. A space where walls don't divide, but embrace. Where design flows instead of imposing.

Whispering Terrain is an homage to the resilience of stone, the grace of forests, and the silence that speaks louder than words.

It offers a way back, a reminder that beauty is not just what we build, but what we honour. The truest design may simply be an extension of the earth, shaped by the art of listening.

Rooted in
STRENGTH,
grounded
in **STILLNESS**
DESIGN that draws
from the **LAND.**



WF1671-002



MONTARA

Inspired by forested ridgelines and shifting canyons, Montara mirrors nature's quiet drama.

MONTARA

WF1671-001



WF1671-002



WF1671-003

2 X 6 mtrs



WF1671-001

The images are used for illustration purposes only. | 06



WF1672-003



VERMONTIS

Inspired by shifting elevations and sculpted landforms, Vermontis reflects the enduring spirit of terrain.

VERMONTIS

WF1672-002



WF1672-001



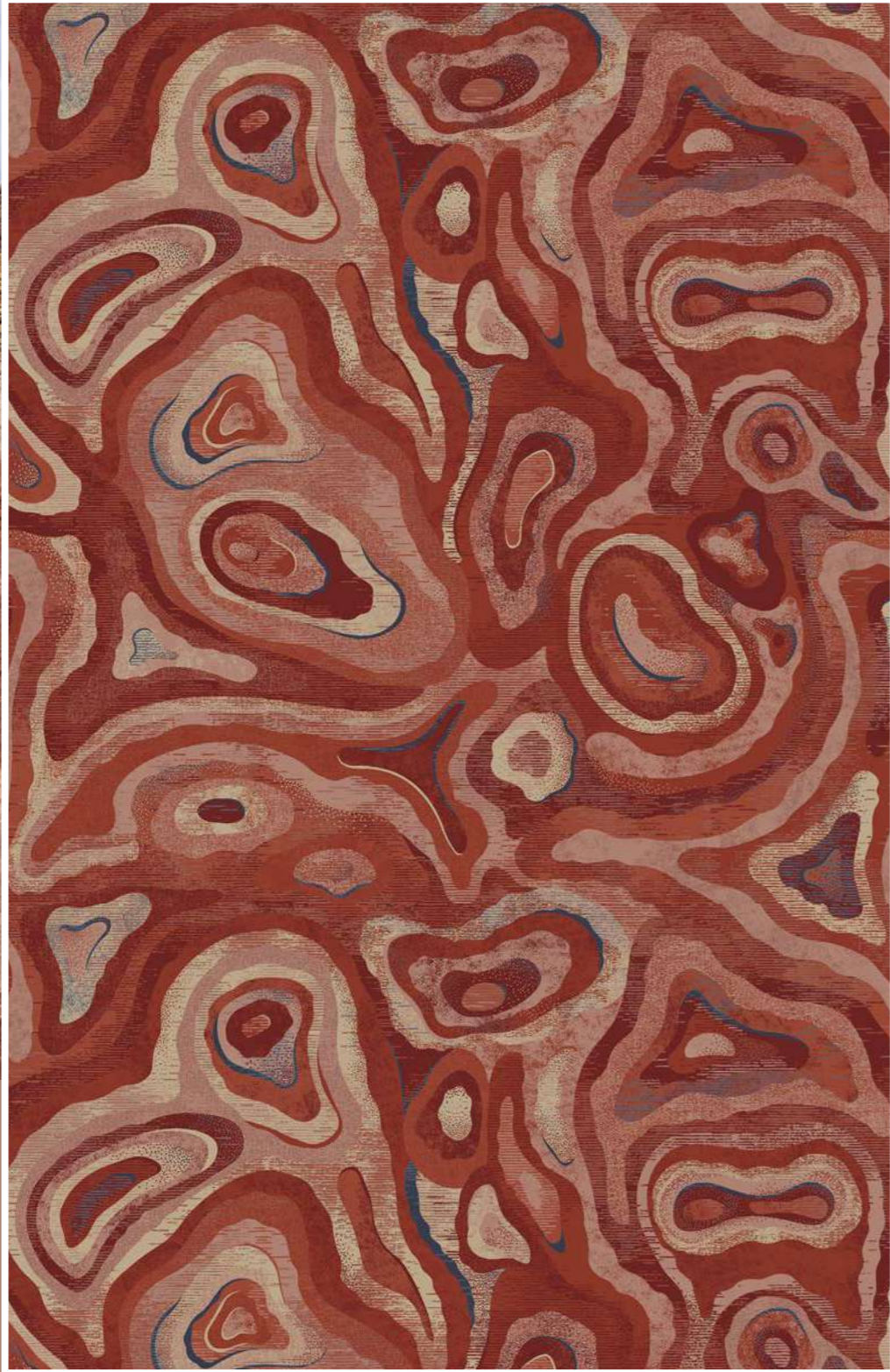
WF1672-003

4 X 4 mtrs



WF1672-002

The images are used for illustration purposes only. | 10



ZEPHARA

Inspired by wind-carved surfaces and layered stone, Zephara captures nature's rhythmic flow.



ZEPHARA

WF1673-002

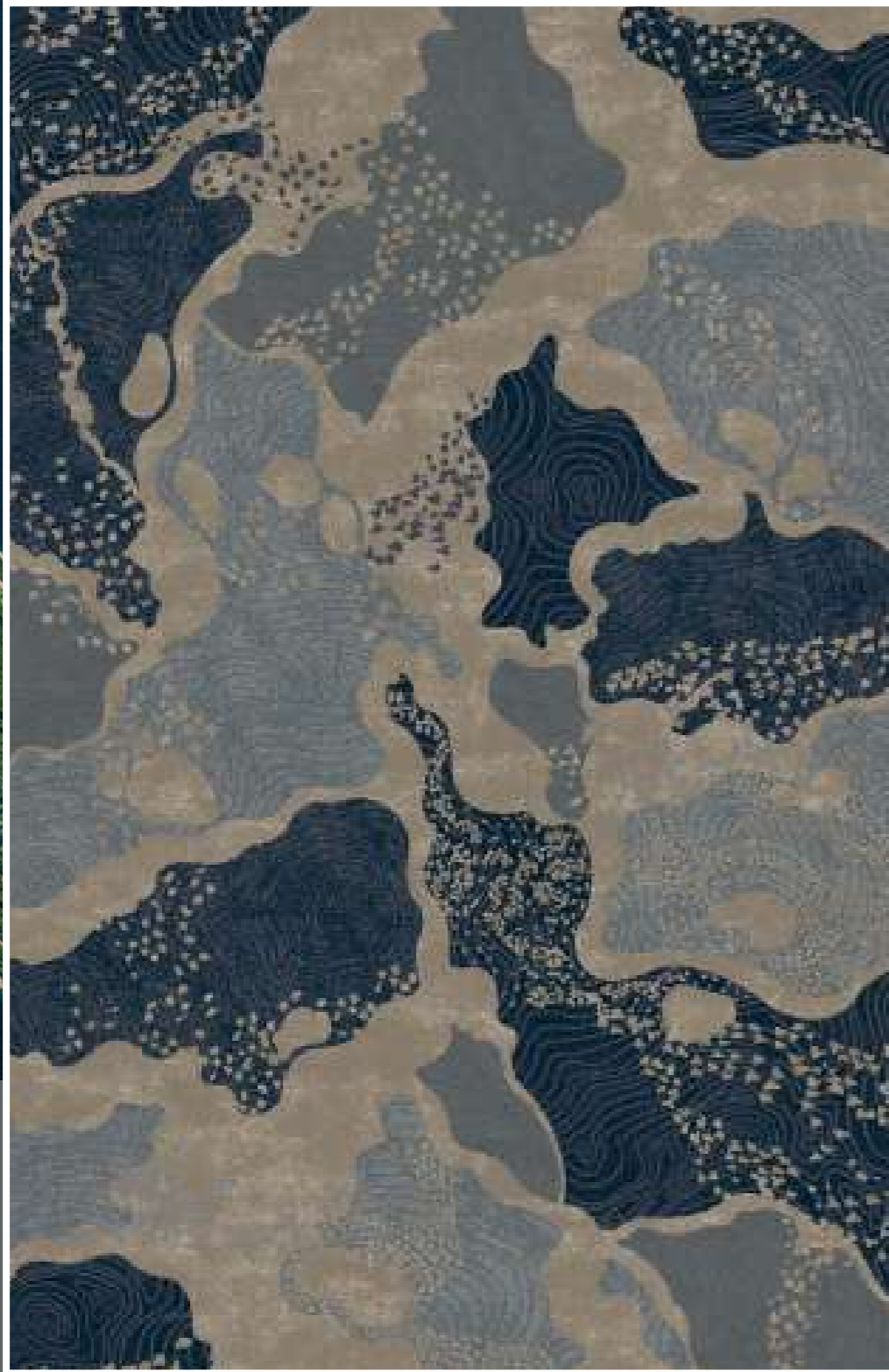


WF1673-003



4 X 4 mtrs

WF1673-001



WF1674-002



MEANDIS

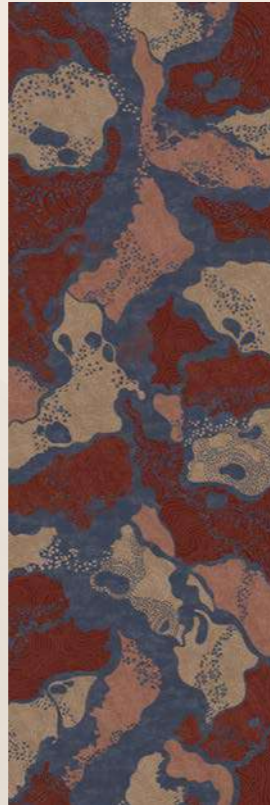
Inspired by branching rivers and organic pathways, Meandis traces the quiet rhythm of water shaping land.

MEANDIS

WF1674-002



WF1674-001



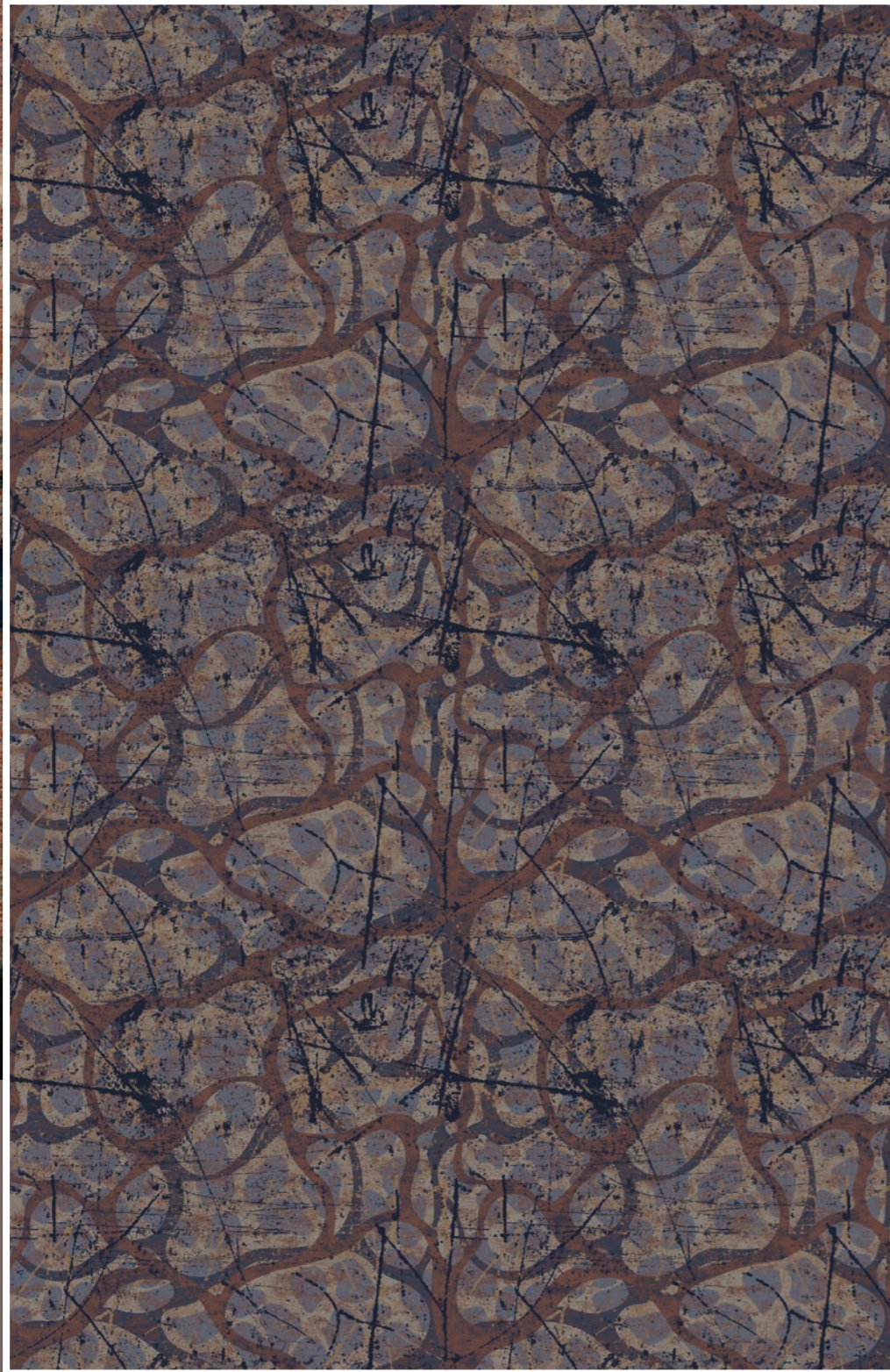
WF1674-003

2 X 6 mtrs



WF1674-002

The images are used for illustration purposes only. | 18

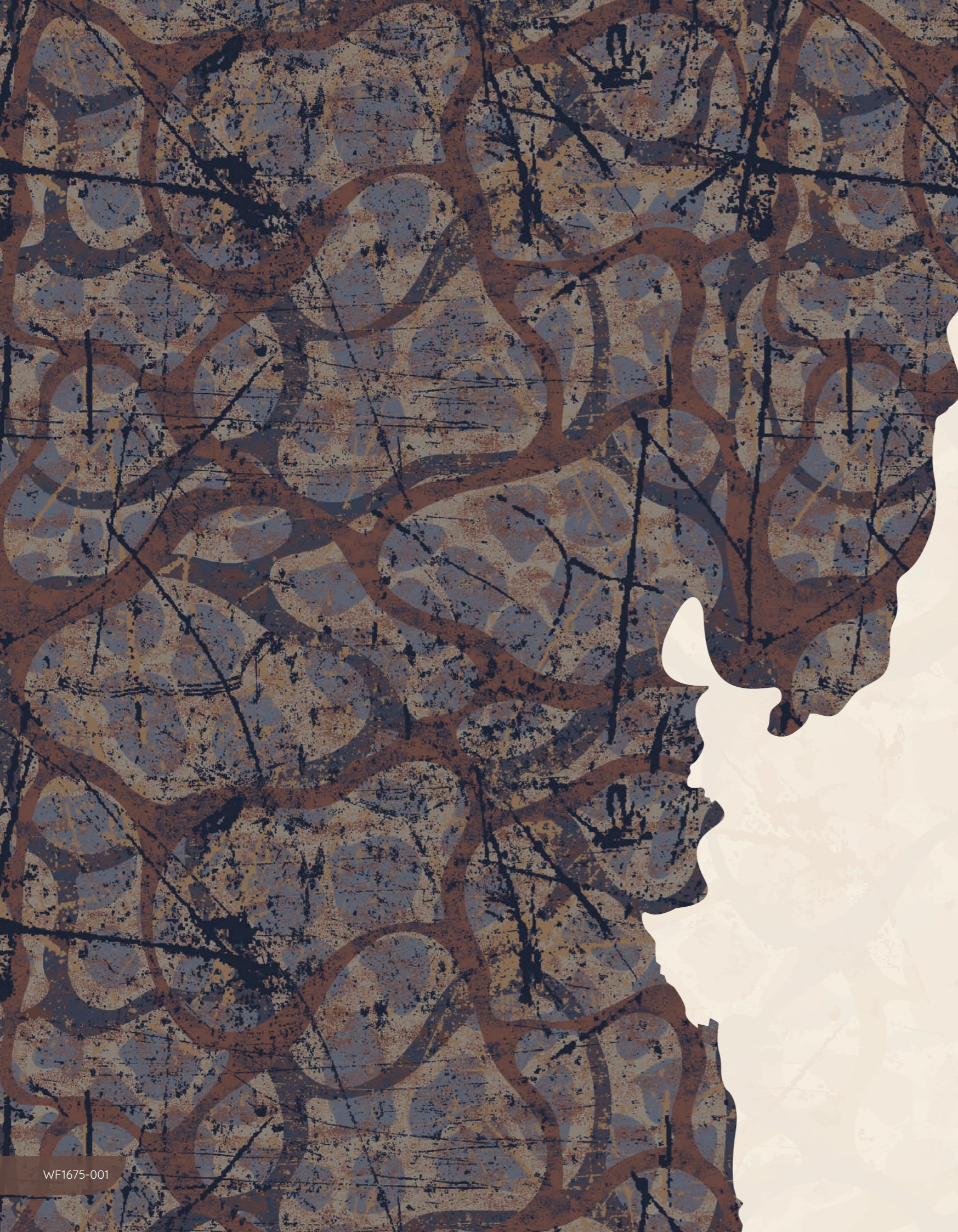


WF1675-001



ELDORA

Inspired by timeworn trails and hidden networks, Eldora reveals nature's quiet imprints beneath the surface.



ELDORA

WF1675-002



WF1675-003



4 X 4 mtrs

WF1675-001



WF1676-001

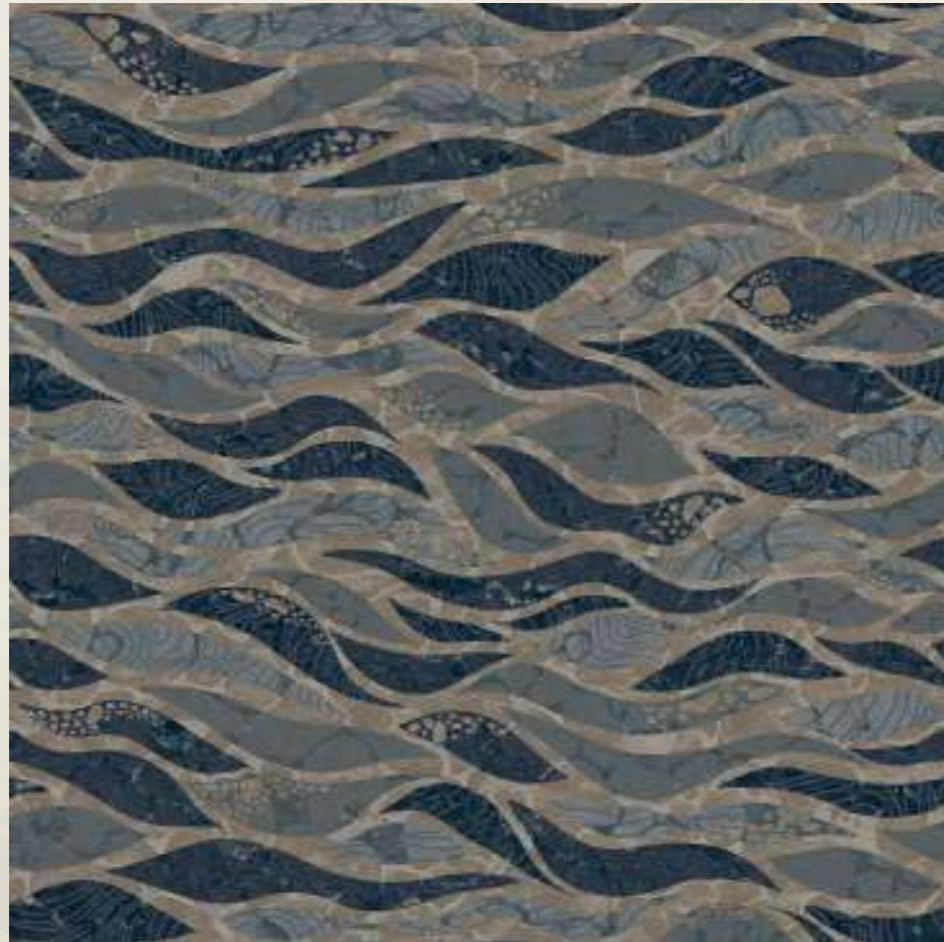


MURMUR

Inspired by flowing currents and wind-swept forms,
Murmur moves in quiet patterns shaped by nature's breath.

MURMUR

WF1676-001



WF1676-002



WF1676-003

4 X 4 mtrs



WF1676-001

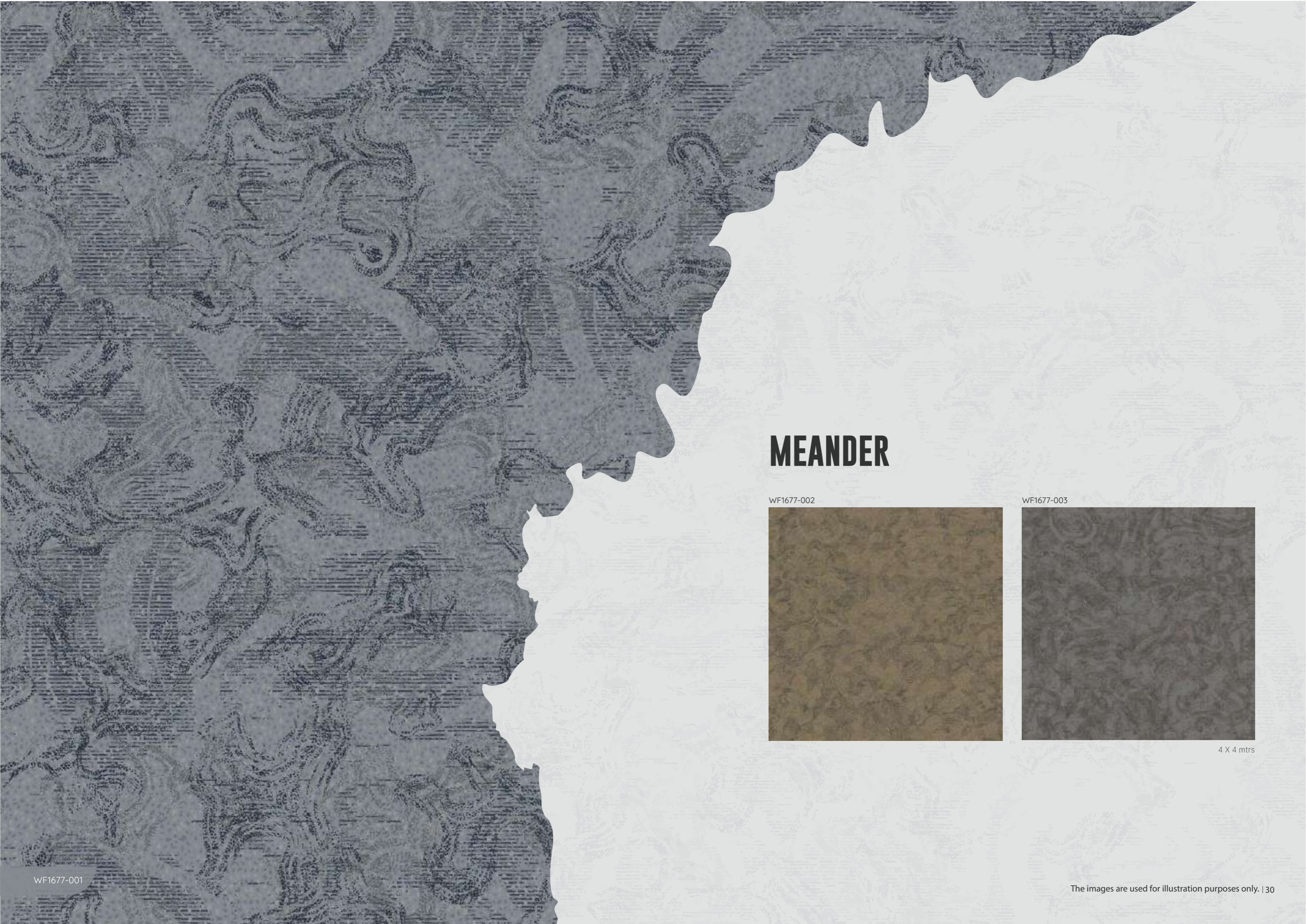
The images are used for illustration purposes only. | 26



WF1677-002

MEANDER

Inspired by wandering paths and soft erosion,
Meander reflects the gentle persistence of flowing time.



MEANDER

WF1677-002



WF1677-003



4 X 4 mtrs



WF1678-003



DRIFT

Inspired by tidal edges and shifting sands,
Drift traces the quiet transitions shaped by nature's ebb and flow.

DRIFT

WF1678-003



WF1678-001



WF1678-002

2 X 6 mtrs



WF1678 -003

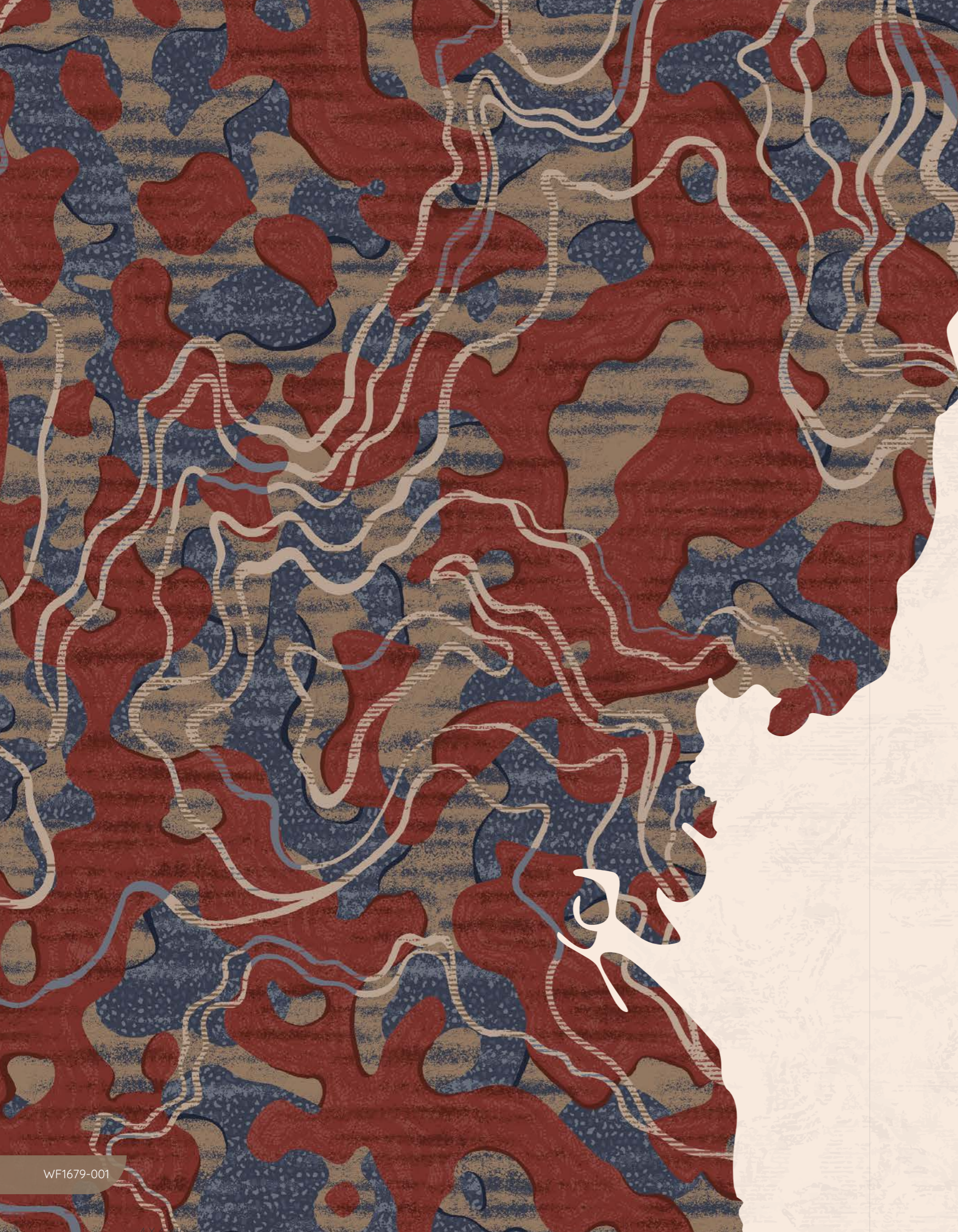
The images are used for illustration purposes only. | 34



WF1679-001

RIVARA

Inspired by winding waterways and branching currents, Rivara captures nature's restless rhythm in fluid motion.



RIVARA

WF1679-002



WF1679-003



4 X 4 mtrs

WF1679-001



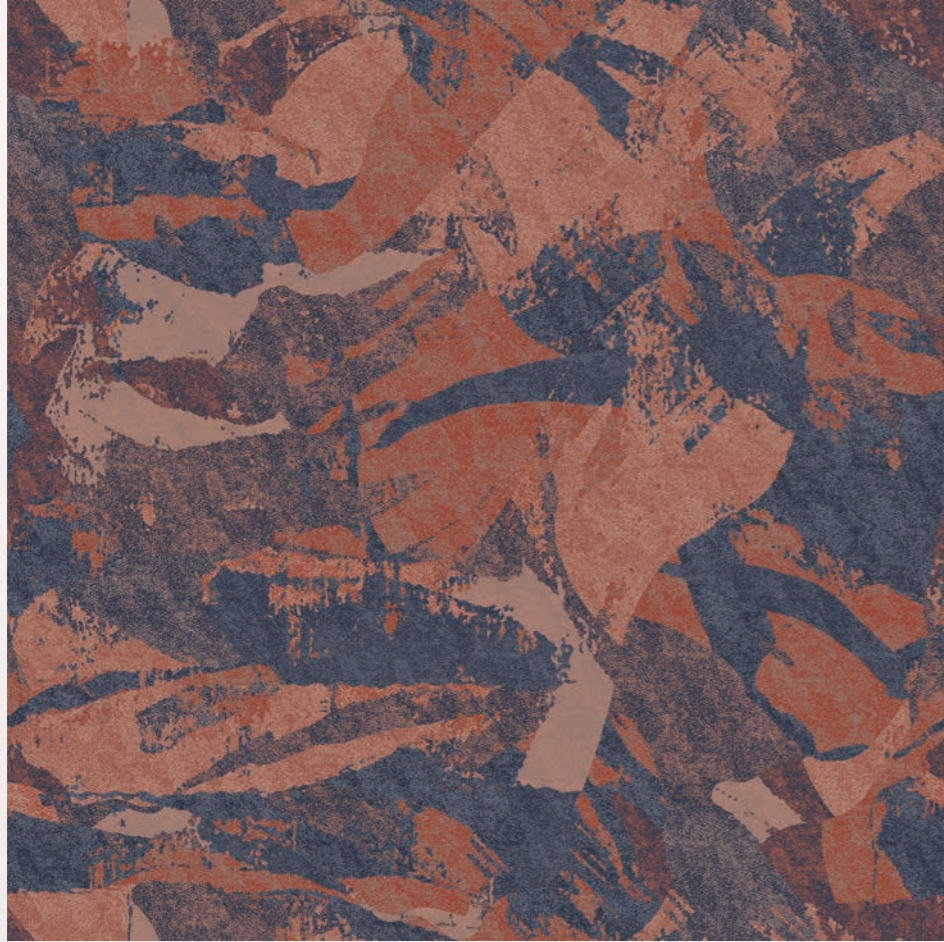
XYRA

Inspired by abstract terrain and raw expression, Xyra evokes the wild, untamed textures of earth in motion.

WF1680-001

XYRA

WF1680-002



WF1680-001



WF1680-003

4 X 4 mtrs



WF1680-002

The images are used for illustration purposes only. | 42

Fiber	100% Polyamide 6
Product Type	Cut & Loop
Pile (GSM)	590 to 1500
Total (GSM)	1776 to 2686
Pile Height (mm)	7 to 10
Tufting Type	1/8 & 1/10
Indicates	+/-5%

*All design Colors are indicative. Please refer to the actual products for exact colors.

Test Report Summary

Test Name	Method	Test Name	Method
Anti Microbial Treatment	AATCC 174 (Part II & III)	Flammability (Pill Test)	ASTM D 2859
Delamination	ASTM D 3936	Flammability (Radiant Panel)	ASTM E 648-06
Tuft Bind	ASTM 1335-67	NBS Smoke Density (Flaming)	ASTM E 662-06
Castor Chair	DIN 54324	Lightfastness	AATCC 16 E
Pile weight	ASTM D 5848-07	Colour fastness to Ozone	AATCC 129
Pile density	AST D 5848-07	Colour fastness to NO _x	AATCC 164-2008
Hexapod	ASTM D 5252-15	Crocking Dry and Wet	AATCC 165-2008
Pile height	ASTM D 5823-05a	Stain fastness	AATCC 175-2008/ITTS 002
Gauge	ASTM D 5793-13	Shampoo Fastness	AATC 138
Static Electricity	AATCC 134-1996	Water Fastness	AATCC 107
Green Carpet (VOC)	ASTM D 5116		

Our Products Are Compliant With Global Standards

