

The background of the entire image is a close-up, high-resolution photograph of a heavily rusted metal surface. The rust is a mix of dark brown, orange, and grey tones, with some areas showing the underlying blue-grey metal. The texture is rough and uneven, with various pits and ridges.

Welspun[®]
FLOORING

|| VESTIGES ||

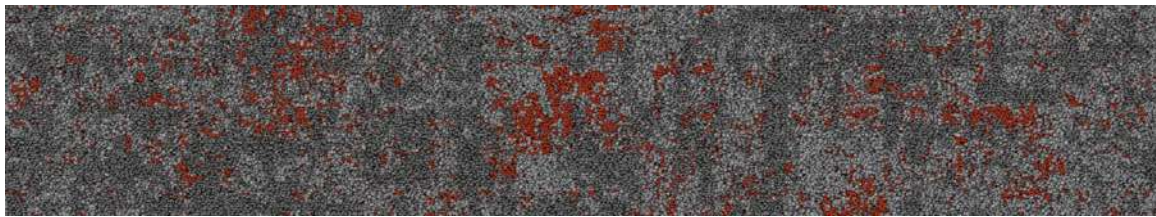


|| VESTIGES ||

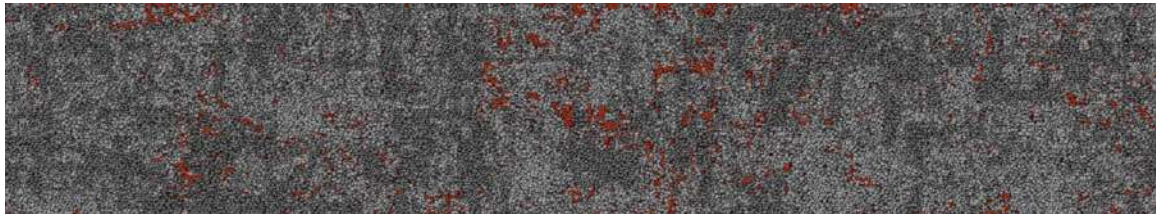
The collection explores the aesthetic decay of urban. Rusty, galvanised and oxidised surfaces serves as inspiration for this collection. Vestiges highlights how rust and corrosion, which is constantly changing and reacting to its environment, imitates life. Instead of seeing rust and corrosion as decay and abandonment, Vestiges aims to focus on progress, change and development. Just like any living surface, rust is also beautifully textured.

Vestiges use denser construction to delineate the finer details of the corrosion and rust. The organic pattern offers versatility to complement any ambience.

PROGRESS : CHANGE : DEVELOPMENT



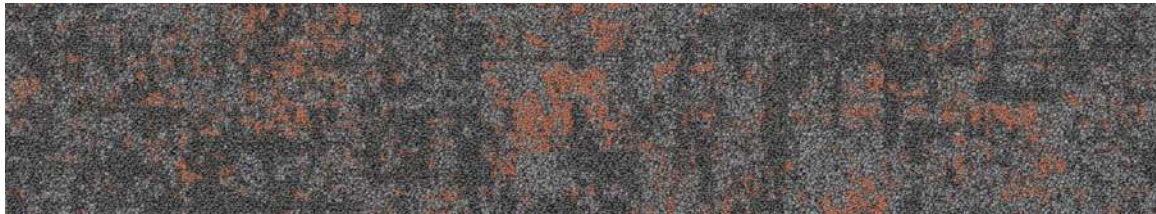
RHODAMINE RED



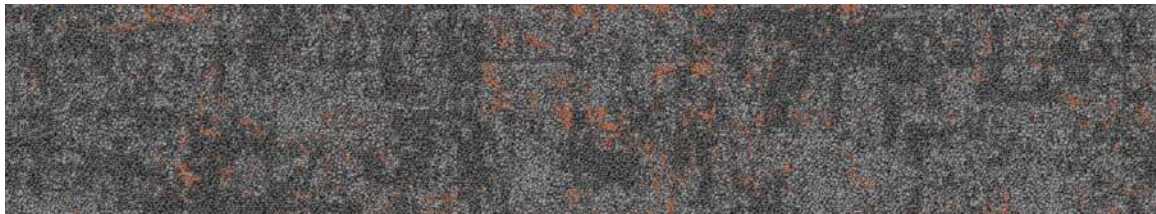
PEARL RHODAMINE RED



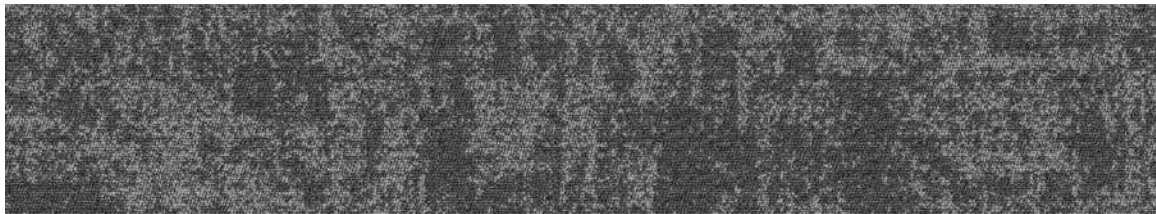
PEARL GREY



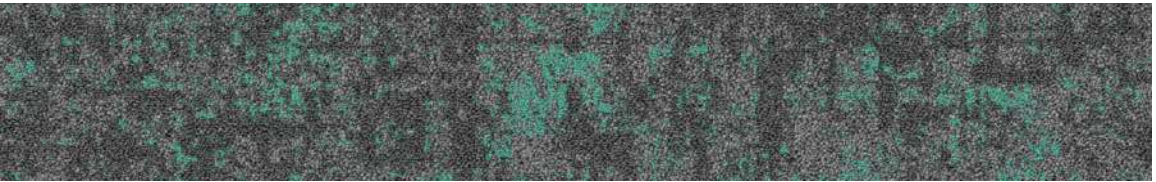
ROSE GOLD



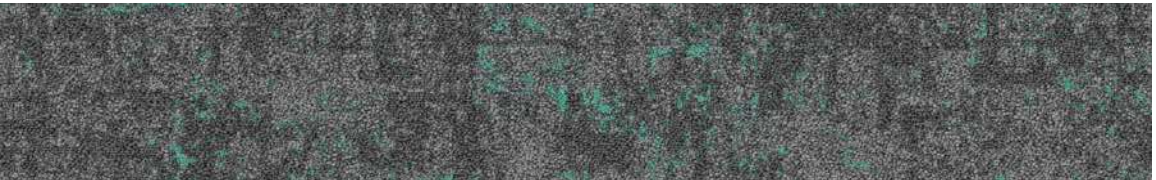
PEARL ROSE GOLD



PEARL GREY



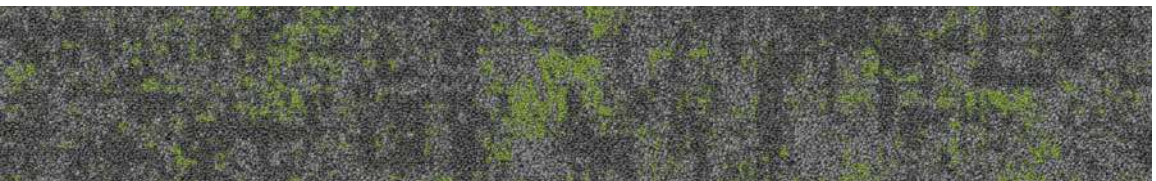
ALGAE TEAL



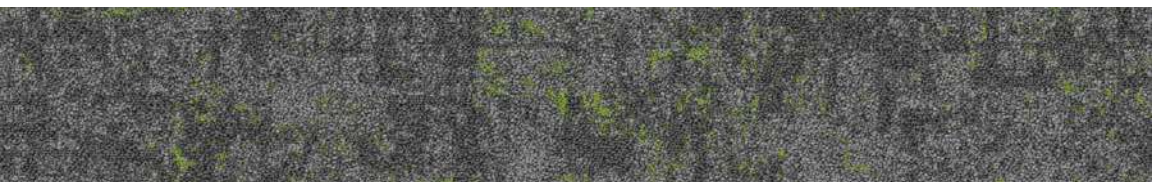
PEARL ALGAE TEAL



PEARL GREY



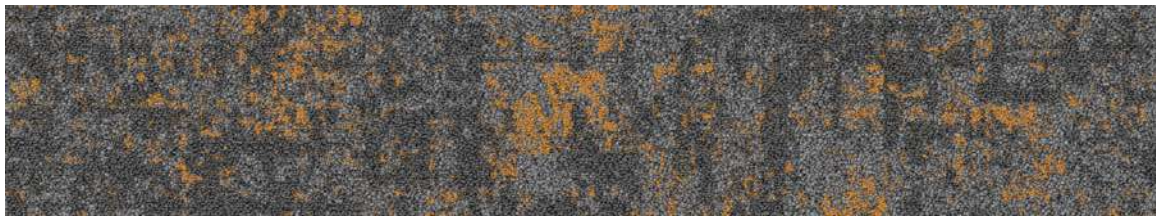
CHROME GREEN



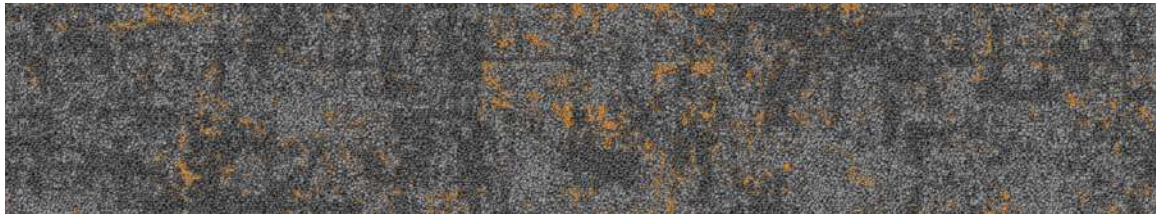
PEARL CHROME GREEN



PEARL GREY



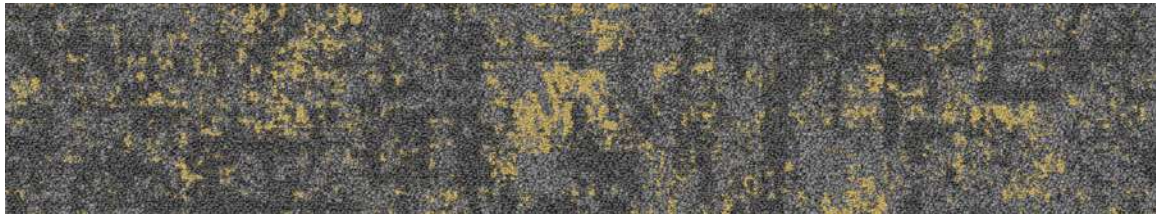
COPPER YELLOW



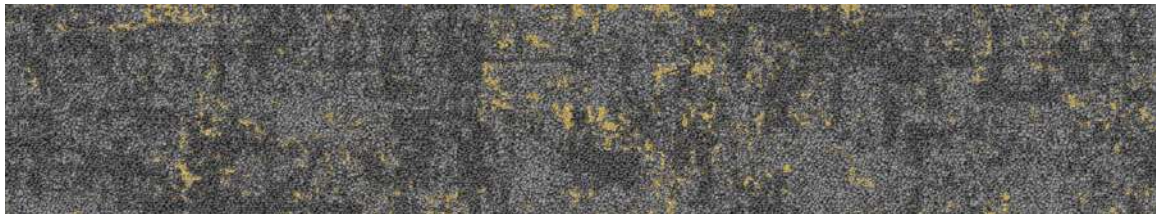
PEARL COPPER YELLOW



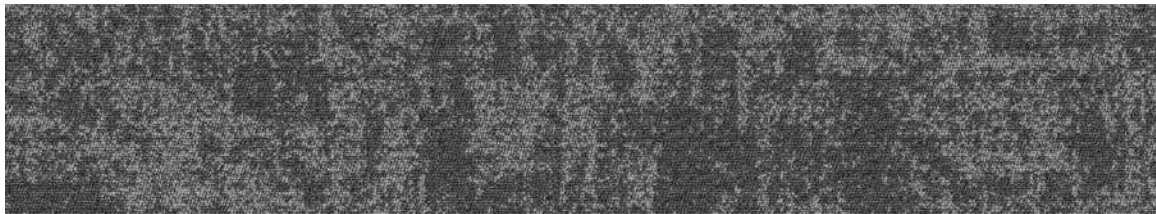
PEARL GREY



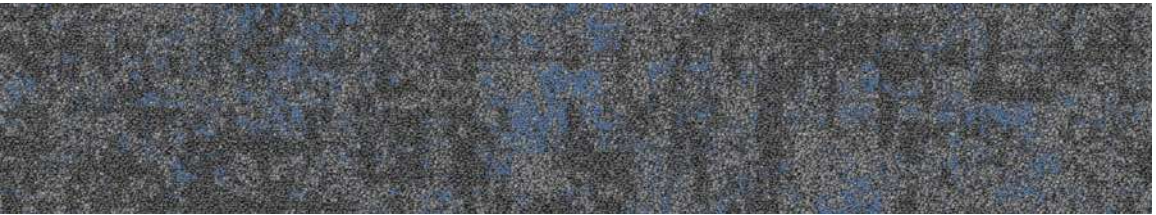
AZO GOLD



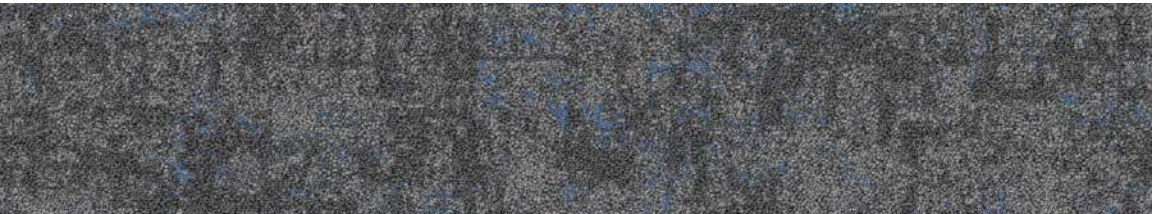
PEARL AZO GOLD



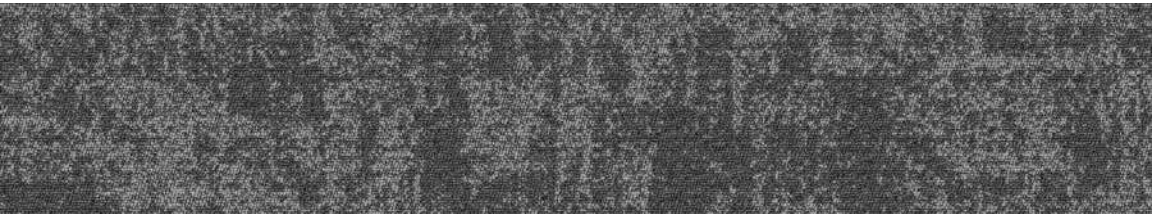
PEARL GREY



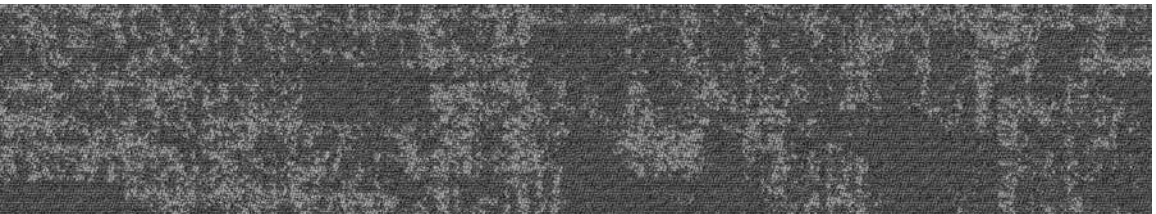
COBALT



PEARL COBALT



PEARL GREY



COAL GREY





RHODAMINE RED | PEARL RHODAMINE RED | PEARL GREY

* For illustrative purposes only.



ROSE GOLD | PEARL ROSE GOLD | PEARL GREY

* For illustrative purposes only.



ALGAE TEAL | PEARL ALGAE TEAL | PEARL GREY

* For illustrative purposes only.



CHROME GREEN | PEARL CHROME GREEN | PEARL GREY

* For illustrative purposes only.



COPPER YELLOW | PEARL COPPER YELLOW | PEARL GREY

For illustrative purposes only.



AZO GOLD | PEARL AZO GOLD | PEARL GREY

* For illustrative purposes only.





COAL GREY

For illustrative purposes only.

FROM AN IDEA TO A REVOLUTION AND BEYOND ||

Welspun is one of India's fastest-growing global conglomerates. With 'Har Ghar Welspun' at the heart of our culture, we are amongst global leaders in markets like U.S.A, Saudi Arabia, Europe and also in India.

Welspun Flooring is Welspun Group's newest brainchild. With a state-of-the-art manufacturing facility spread over 300 acres, we are disrupting the world of flooring. Crafted passionately by our dedicated team of experts, Welspun Flooring is a breakthrough in terms of engineering and design. With form meeting function in each style, you'll see flooring in a new light!

Product and Process Innovation is at the heart of everything we do here. We are proud that this drive to innovate has led to the creation of various trademarks, technologies and designs beyond category codes.

Our vertically integrated state-of-the-art manufacturing plant spread over 300 acres in Hyderabad, India is Asia's largest production facility and an epitome of advanced flooring technology.

With uncompromised notion, and with Welspun Flooring transcending boundaries, the same has carved a niche in the industry.

Welspun Flooring is winning the World, One room at a time.

ALL FOR A BETTER TOMORROW! ||

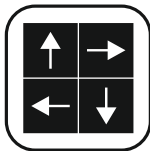
A responsibility to the environment and a commitment to sustainable social progress have long been enshrined in Welspun's way of working. Be it the communities we influence, the families we're a part of or the entrepreneurs we partner with.



FEATURES



Nylon Tufted Product



Multiple Design Possibilities



Easy To Install



Reduces Wastage During Installation



Easy To Maintain



Stain Resistance



Fade Resistance



Abrasion Resistance



Texture Resistance



Ideal For Heavy Foot Traffic



Made In India

PRODUCT SPECIFICATIONS IN CARPET TILES

• Quality	Tufted Carpet Tile
• Yarn	100% Solution Dyed Nylon (NY6+™)
• Machine Gauge	1/12 Color Point
• Pile Type	Multi Level Loop
• Pile Height*	5.5 mm
• Tuft Weight *	880 GSM / 26 Oz
• Tuft Density*	5100
• Total Thickness*	8 mm
• Backing System	Extruded PVC (Welspun Ecolite™)
• Size	25X100 cm 50X50 cm

*Indicates +/-5%

CERTIFICATIONS





**EVERY HOME TO
EVERY HEART
WELSPUN**

— #HarDilWelspun —

Welspun^W
FLOORING

Address:

Welspun Global Brands Ltd,
Survey No 190, Chandanvelly,
Near Hythabad, Shabad
Mandal, Ranga Reddy District,
Telangana 501503, India

Contact us :

To transform your flooring, just in touch with us by sending an email at:

Global: global_saleswfl@welspun.com

Website: global.welspunflooring.com

Contact Us

