



# SURFACE STORIES

Erosive Geometry and Urban Tactility





A COLLECTION BY

**Welspun**<sup>®</sup>  
FLOORING

Welspun Flooring's latest collection is inspired by the "Erosive Geometry and Urban Tactility" trend, which showcases a fusion of natural erosion textures with structured geometric patterns. This collection fits the 2025 interior design focus on authenticity, weathered surfaces, and handcrafted looks. It offers versatile flooring solutions that add warmth, texture, and modern sophistication to any interior space.

The collection captures the beauty of natural erosion, like weathered stones, cracked surfaces and geological formations, combined with clean, structured geometric patterns. This juxtaposition creates a balanced design aesthetic that feels both organic and contemporary, perfect for residential, commercial, and hospitality spaces.

Features:

**Natural Erosion Textures:** Patterns that mimic the visual appeal of weathered surfaces, cracks, and sedimentary layers.

**Geometric Overlays:** Clean lines and angular shapes provide a modern twist, adding structure and visual interest.

**Urban Tactility:** The collection focuses on tactile materials that evoke a sense of connection to both natural and urban environments.

# DESIGNER'S CHOICE

Erosive Geometry and Urban Tactility blends natural erosion textures with geometric patterns, reflecting 2025 interior design trends that highlight authentic materials, weathered finishes, and handcrafted aesthetics. This trend caters to a need for grounding and connection to nature, especially in urban environments. It balances structure and organic forms, creating authentic, welcoming spaces that feel lived-in. Geometric patterns bring order, while textured surfaces introduce a human, tactile element that resonates with comfort and nostalgia. Ideal for hospitality and commercial spaces, it blends distressed details with global geometric motifs, offering a timeless yet modern feel. It balances structure and organic forms, creating authentic, welcoming spaces. Geometric patterns bring order, while textured surfaces add a tactile, comforting touch. This is ideal for hospitality and commercial spaces where storytelling and design experience are key. It blends distressed details with global geometric motifs, offering a timeless yet contemporary feel.

## Colour Focus:

**Brown Tones:** Symbolize warmth and grounding, creating inviting spaces.

**Cobalt Blue:** Adds depth with a contemporary touch, perfect for boutique hotels and lounges.

**Gray and Taupe:** Neutral tones for a calming effect

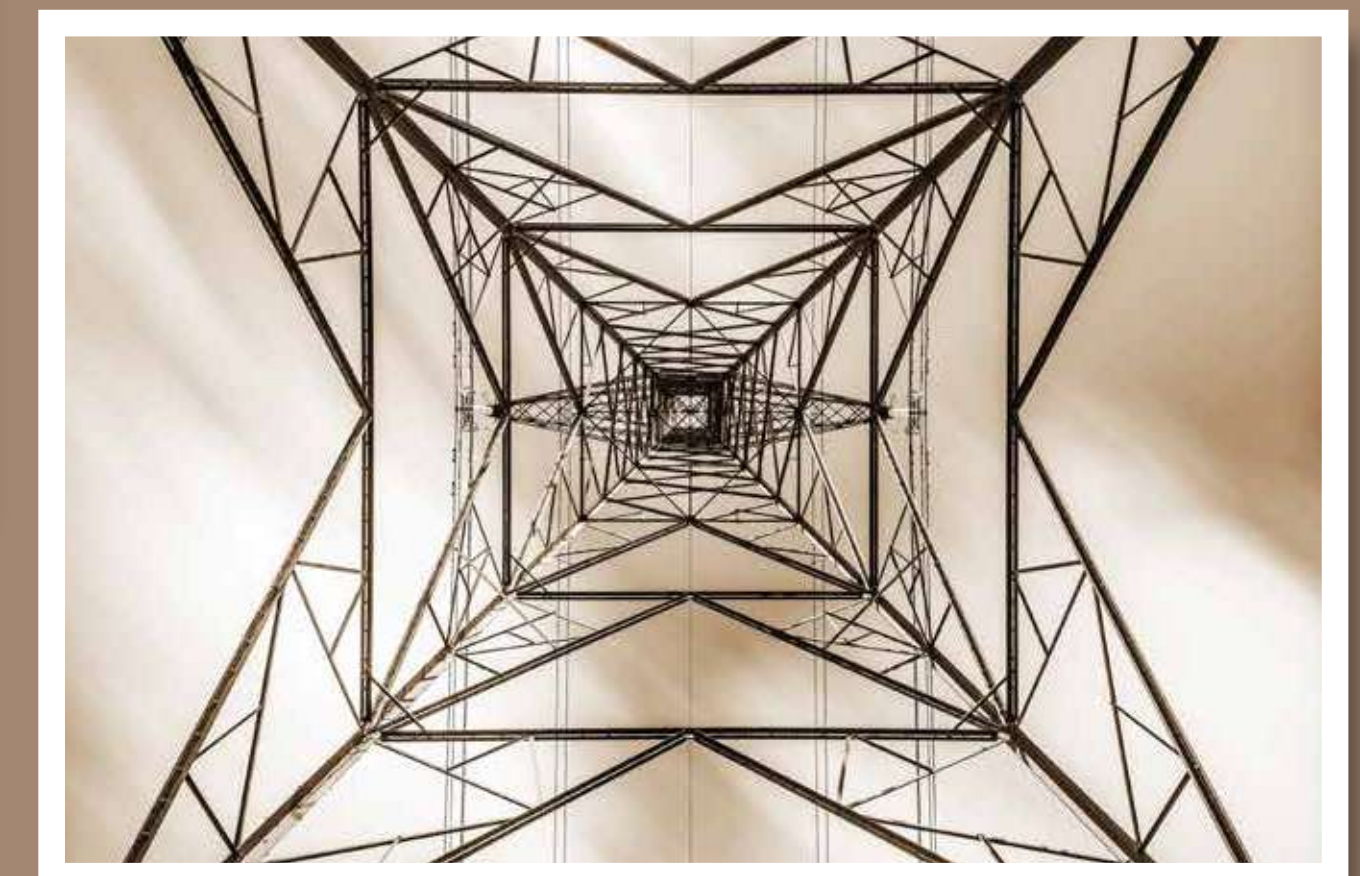
These designs bring warmth and visual interest to hospitality interiors:

**Lobby areas:** Adds a dramatic, artistic focal point.

**Corridors:** Creates a sense of journey with dynamic floors.

**Bar & restaurant floors:** Provides visual interest that masks wear and tear.

The Erosive Geometry & Urban Tactility trend reflects 2025's design themes of grounded, earthy tones that evokes comfort and stability, tactile, distressed textures for authenticity and depth and geometric overlays for a modern yet organic feel.





# URBAN RELIC

## URBAN RELIC

WF1114



WF1114-001  
2x2 mtrs

WF1114-002  
2x2 mtrs



WF1114-003  
2x2 mtrs

WF1114-004  
2x2 mtrs



WF1114-003



WF1114-004

URBAN PATTERNS WITH A NATURAL, GROUNDING TOUCH.



# RUSTIC FOLIAGE

## RUSTIC FOLIAGE

WF1115



WF1115-001  
2x2 mtrs



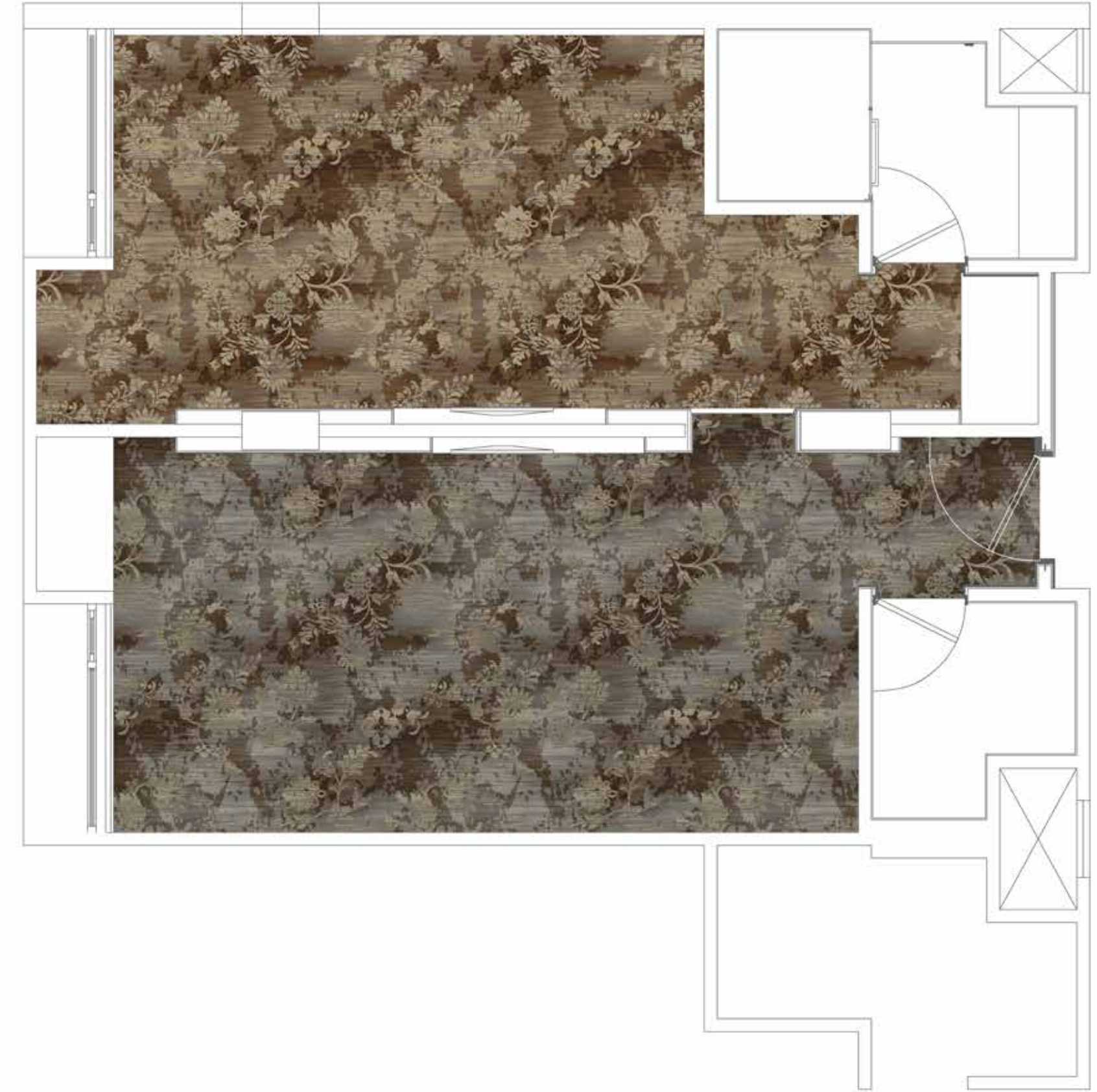
WF1115-002  
2x2 mtrs



WF1115-003  
2x2 mtrs



WF1115-004  
2x2 mtrs



WF1115-002



WF1115-004

TEXTURES THAT TELL AUTHENTIC STORIES.

# TIMEWORN GRID

## TIMEWORN GRID

WF1116



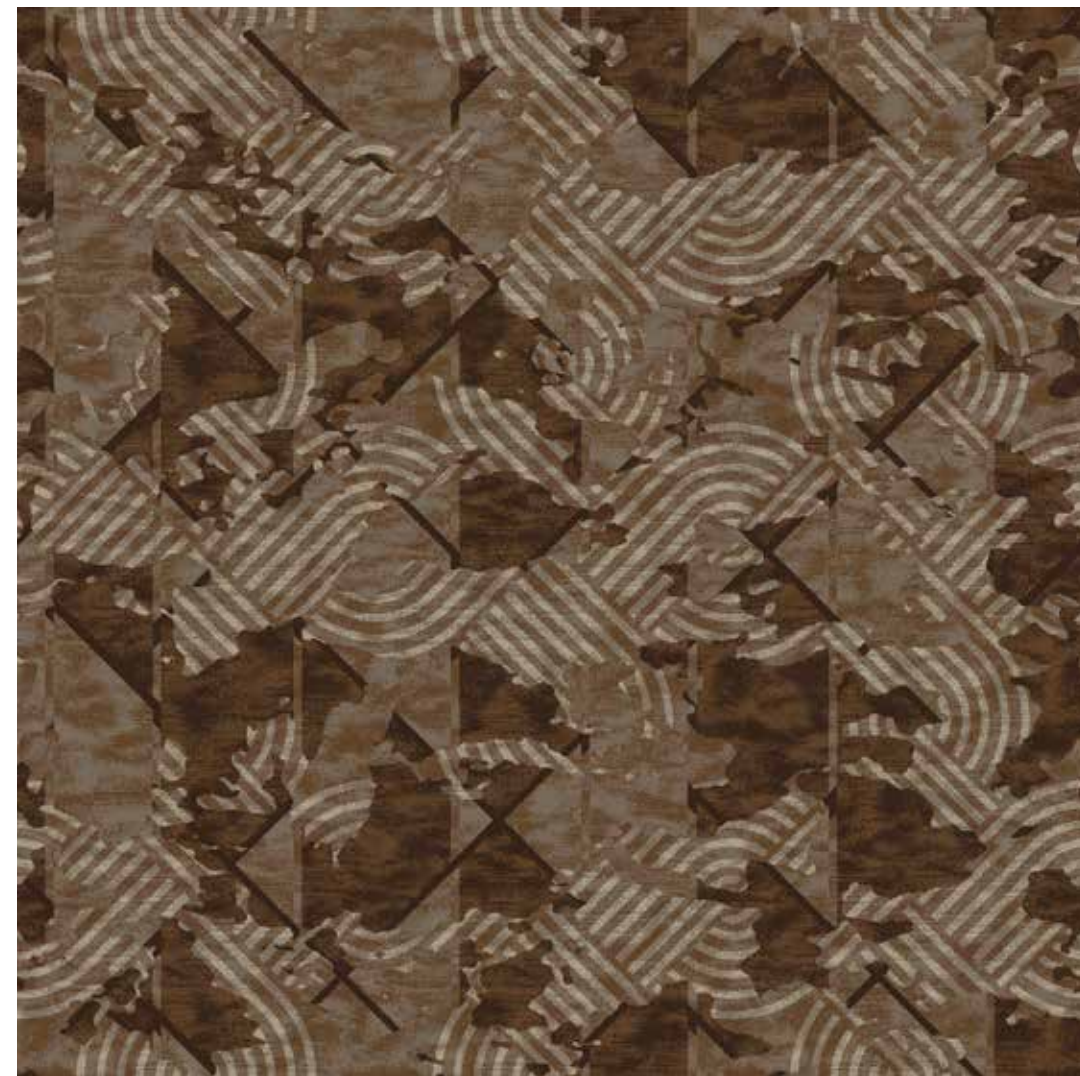
WF1116-001  
2x2 mtrs



WF1116-002  
2x2 mtrs



WF1116-003  
2x2 mtrs



WF1116-004  
2x2 mtrs



DISTRESSED PATTERNS FOR WARMTH AND DEPTH.



WF1116-003

# GEOMETRIC FADE

## GEOMETRIC FADE WF1117



WF1117-001  
2x2 mtrs



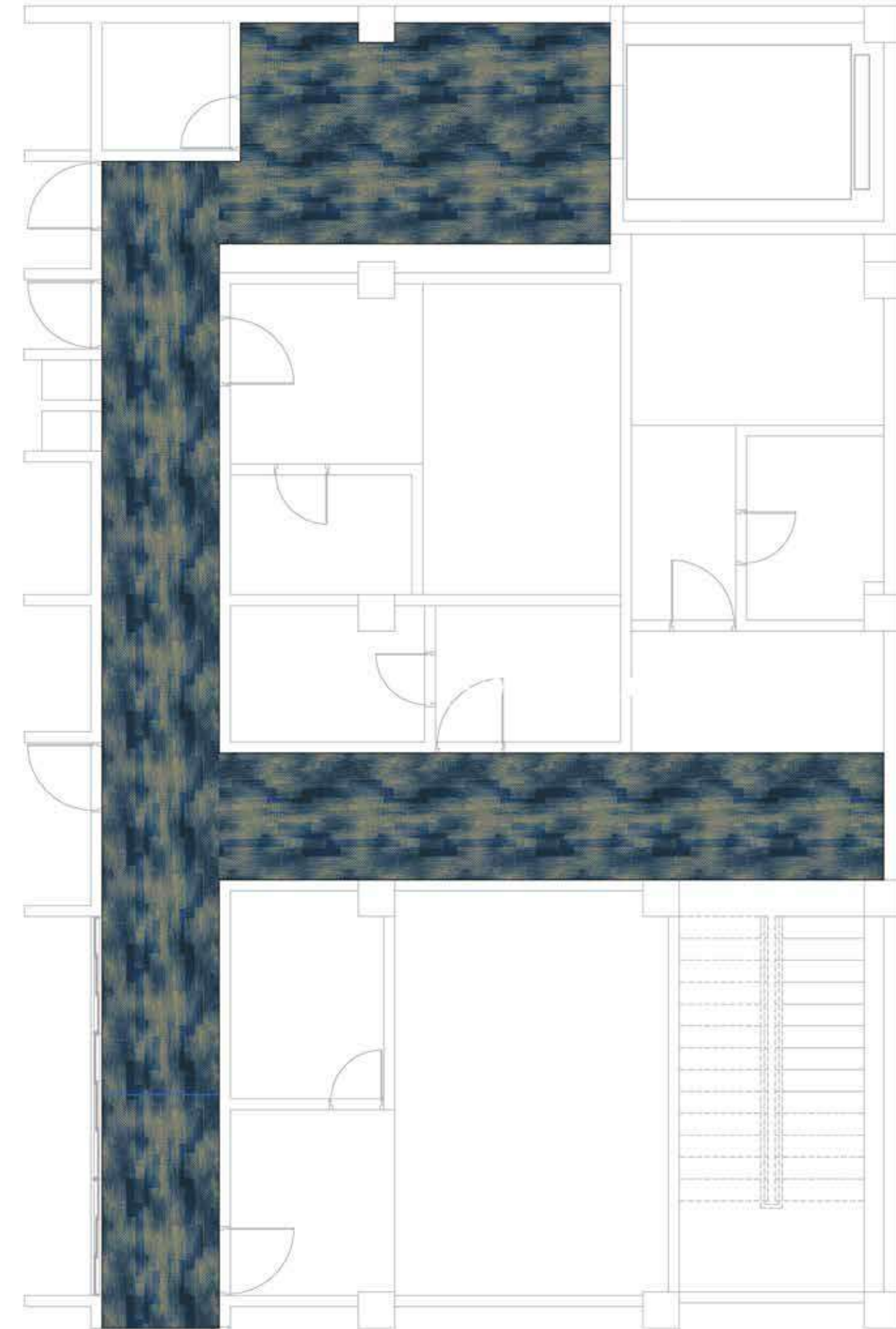
WF1117-002  
2x2 mtrs



WF1117-003  
2x2 mtrs



WF1117-004  
2x2 mtrs



GEOMETRIC ORDER MEETS EARTHY TEXTURES.



WF1117-003



# SPATIAL DRIFT

## SPATIAL DRIFT WF1118



WF1118-001  
2x2 mtrs

WF1118-002  
2x2 mtrs



WF1118-003  
2x2 mtrs

WF1118-004  
2x2 mtrs



AUTHENTIC DESIGNS TO INSPIRE AND GROUND. \_\_\_\_\_



WF1118-001



# ARC TERRAIN

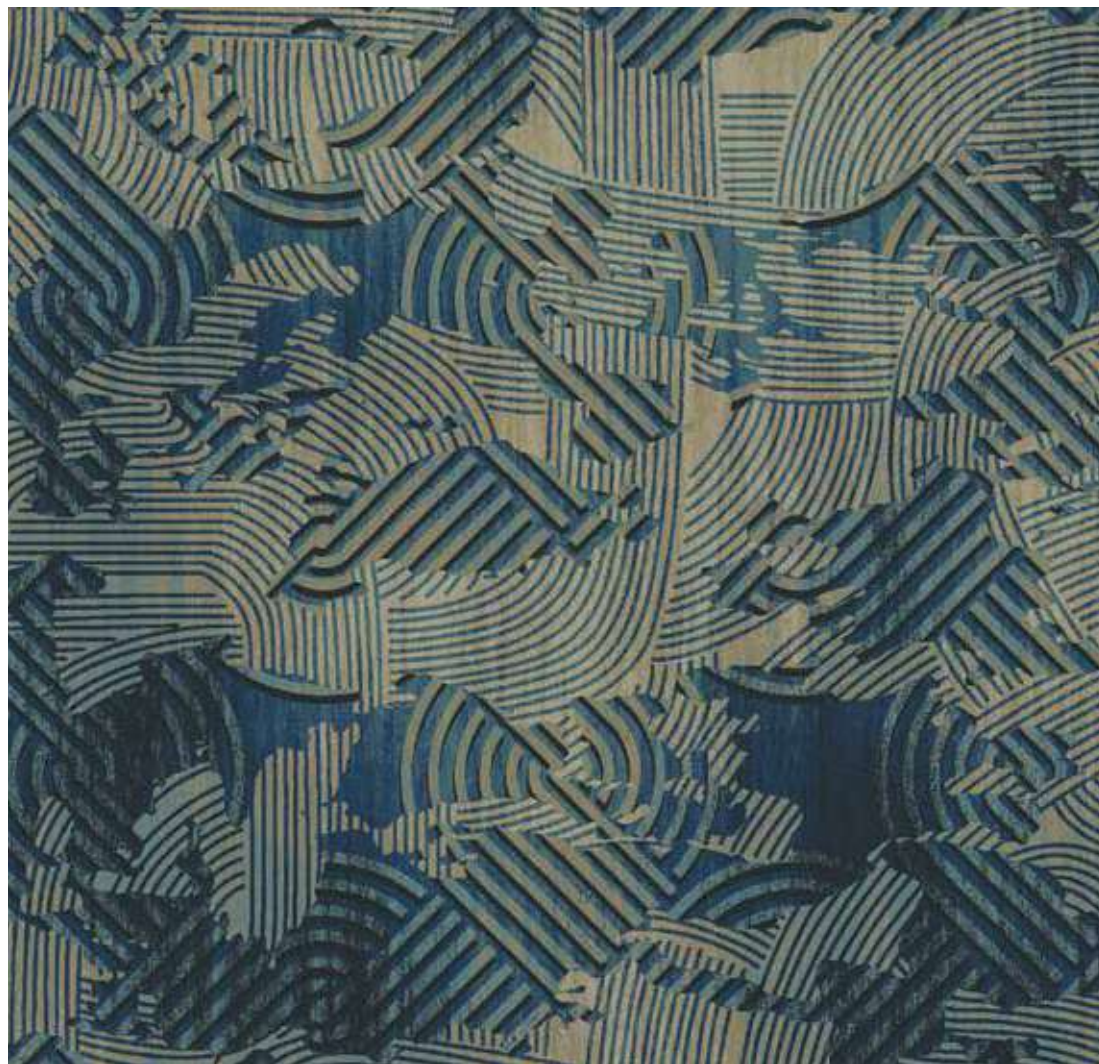
## ARC TERRAIN

WF1119



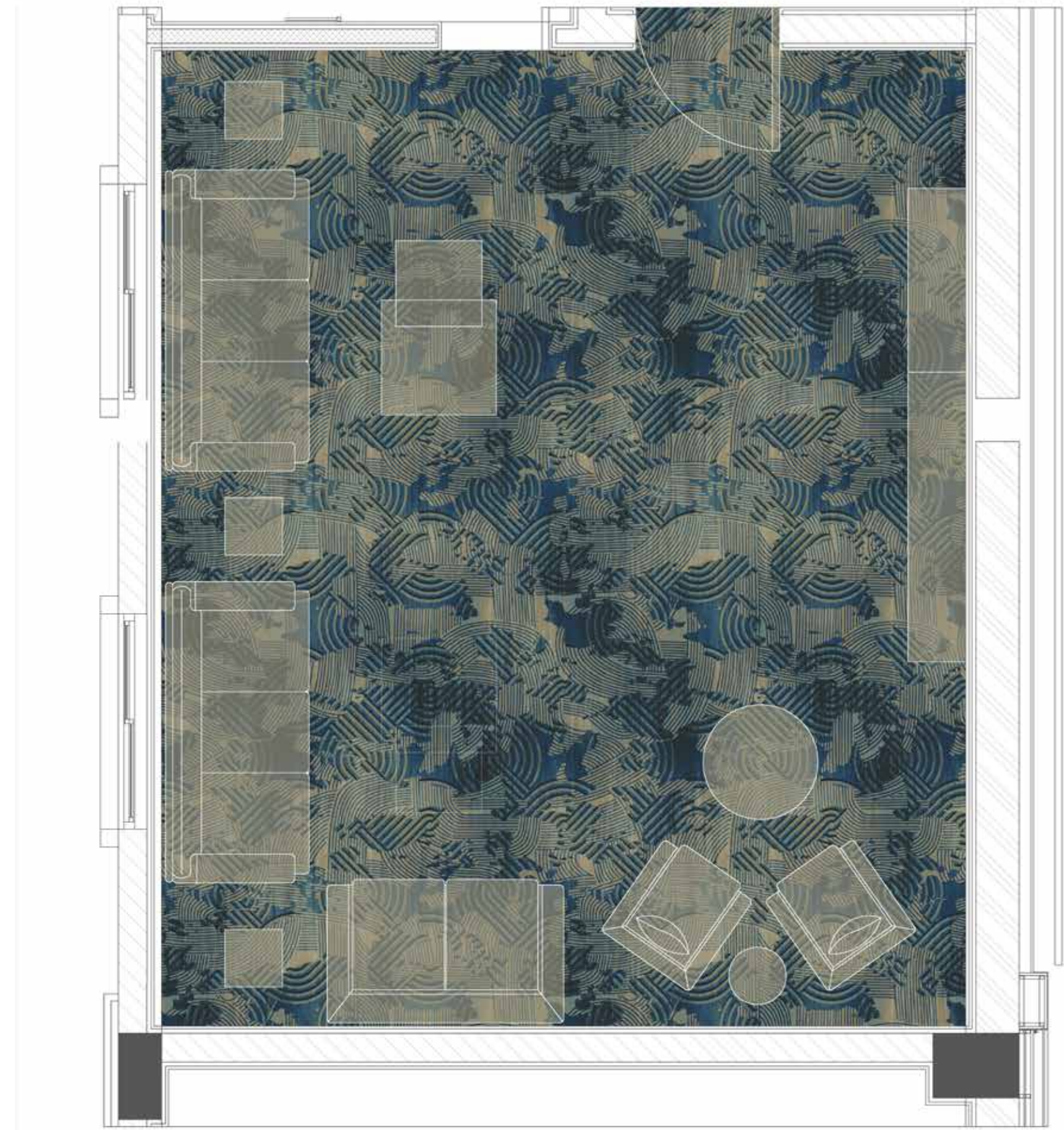
WF1119-001  
2x2 mtrs

WF1119-002  
2x2 mtrs



WF1119-003  
2x2 mtrs

WF1119-004  
2x2 mtrs



ORGANIC TEXTURES MEET MODERN FORMS.

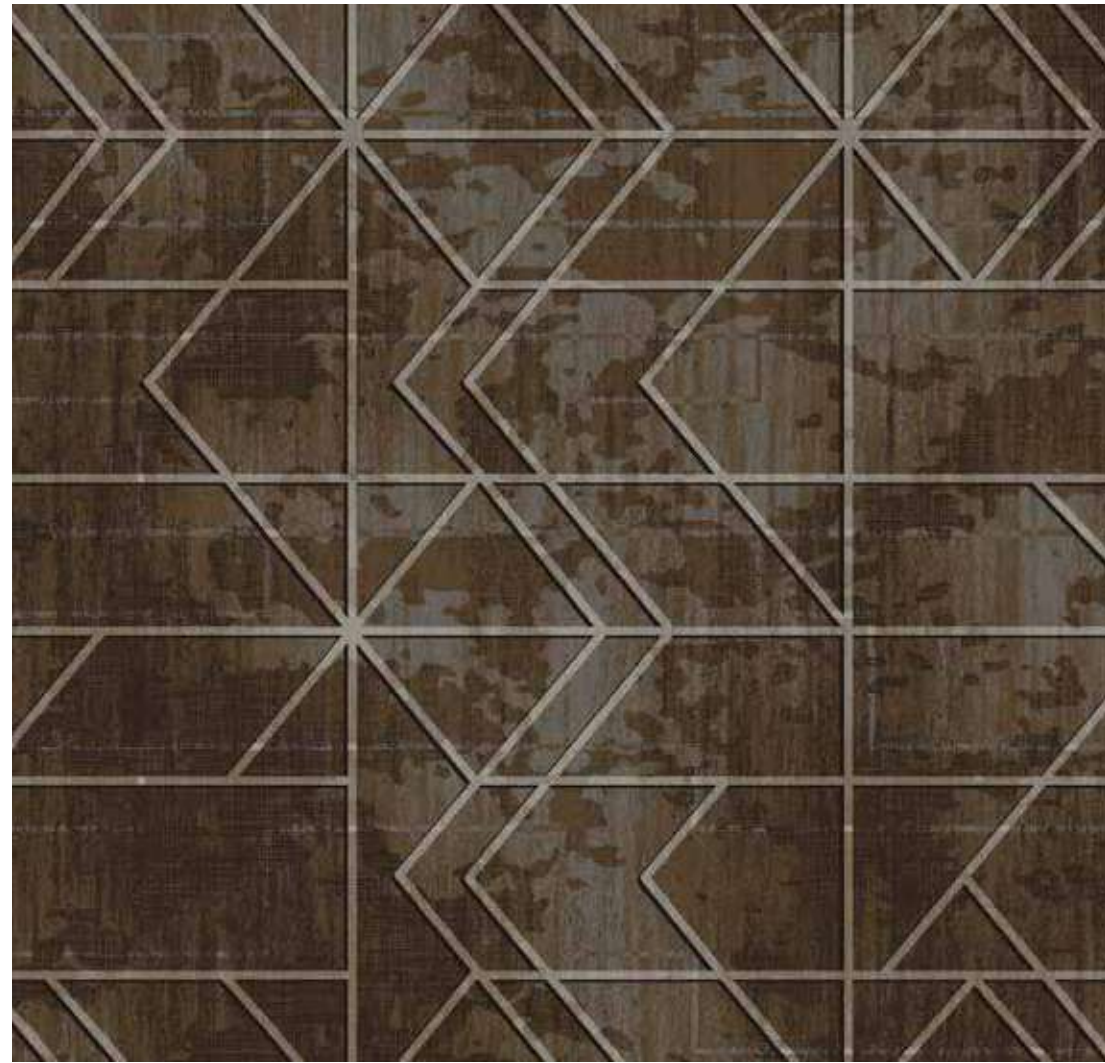
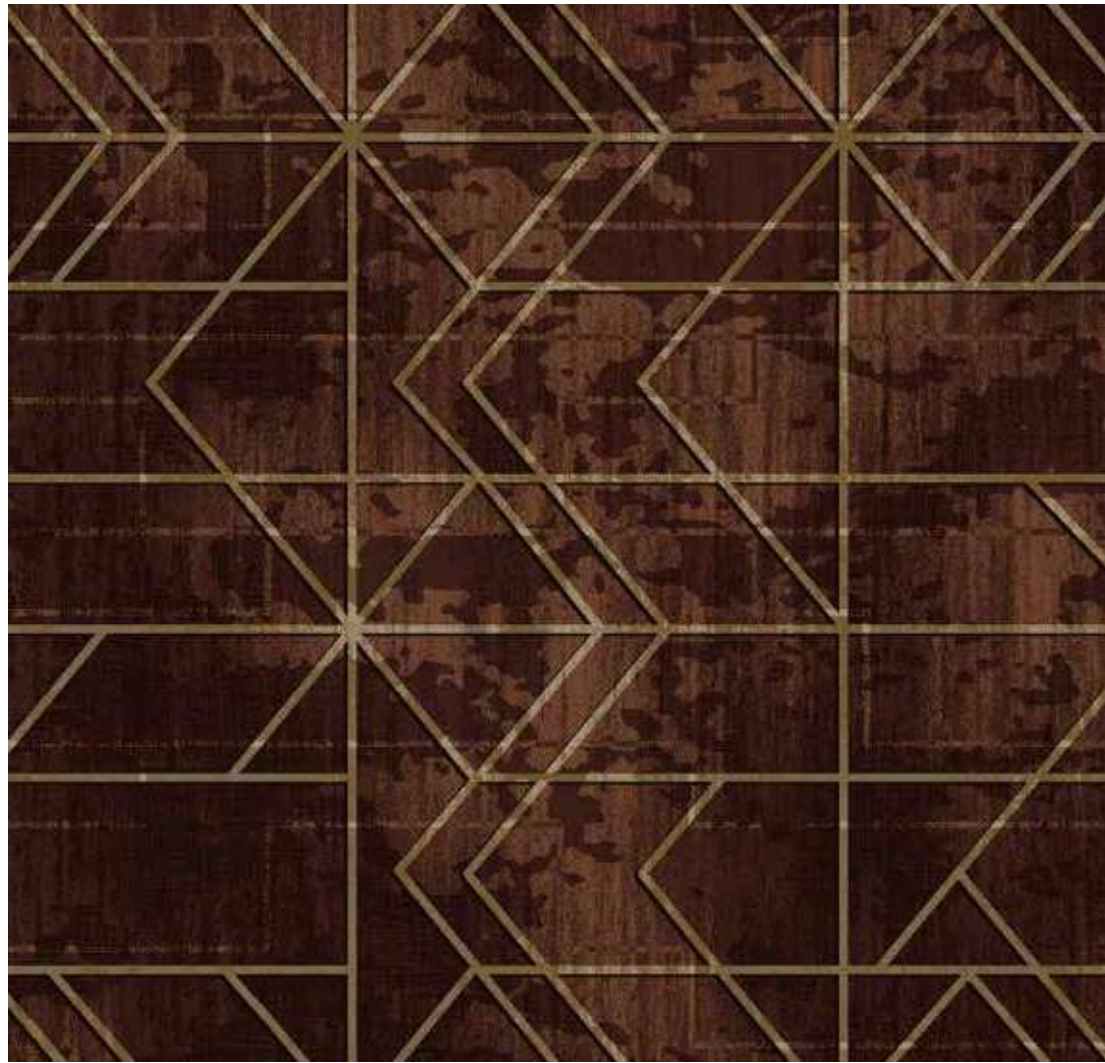


WF1119-003

# URBAN FRACTALS

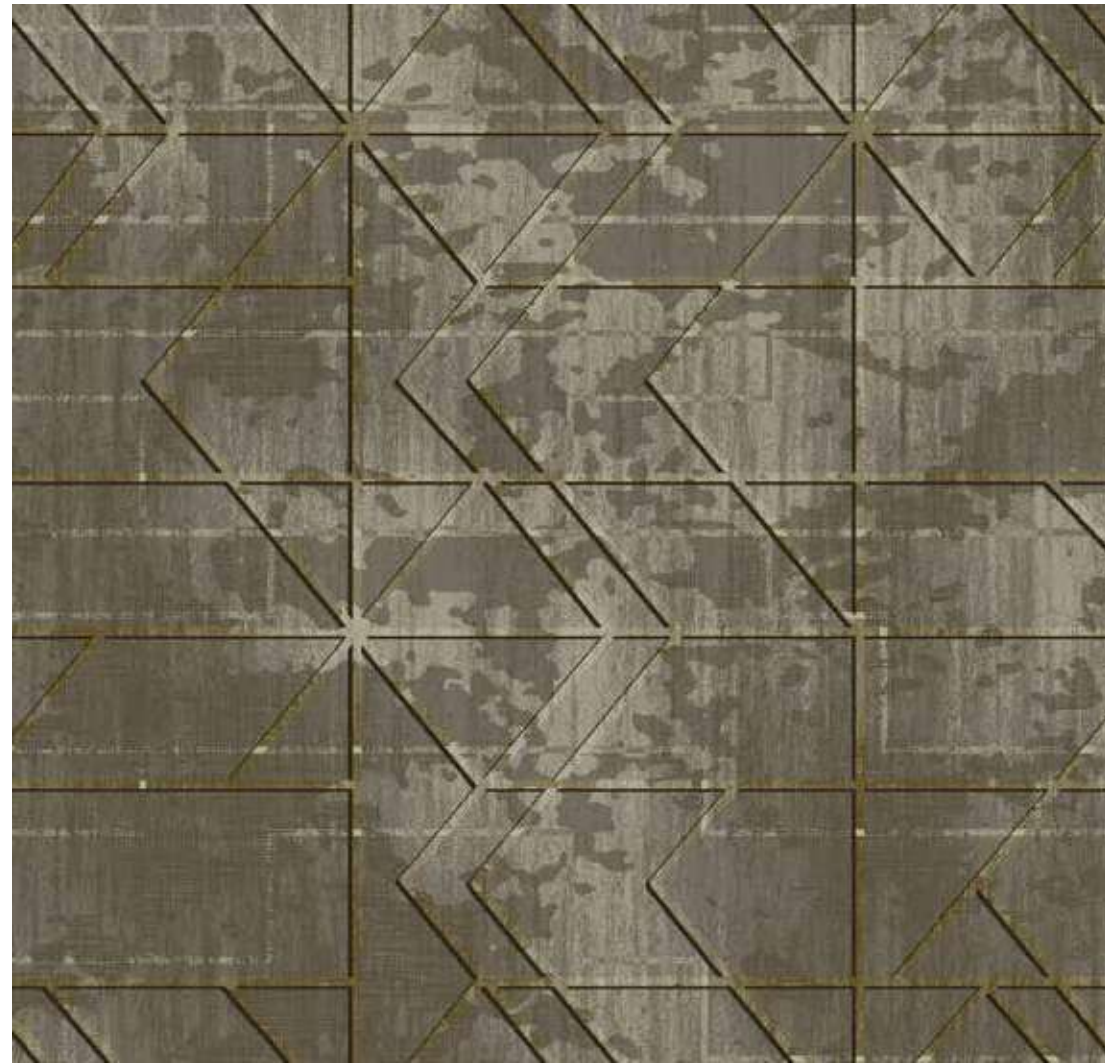
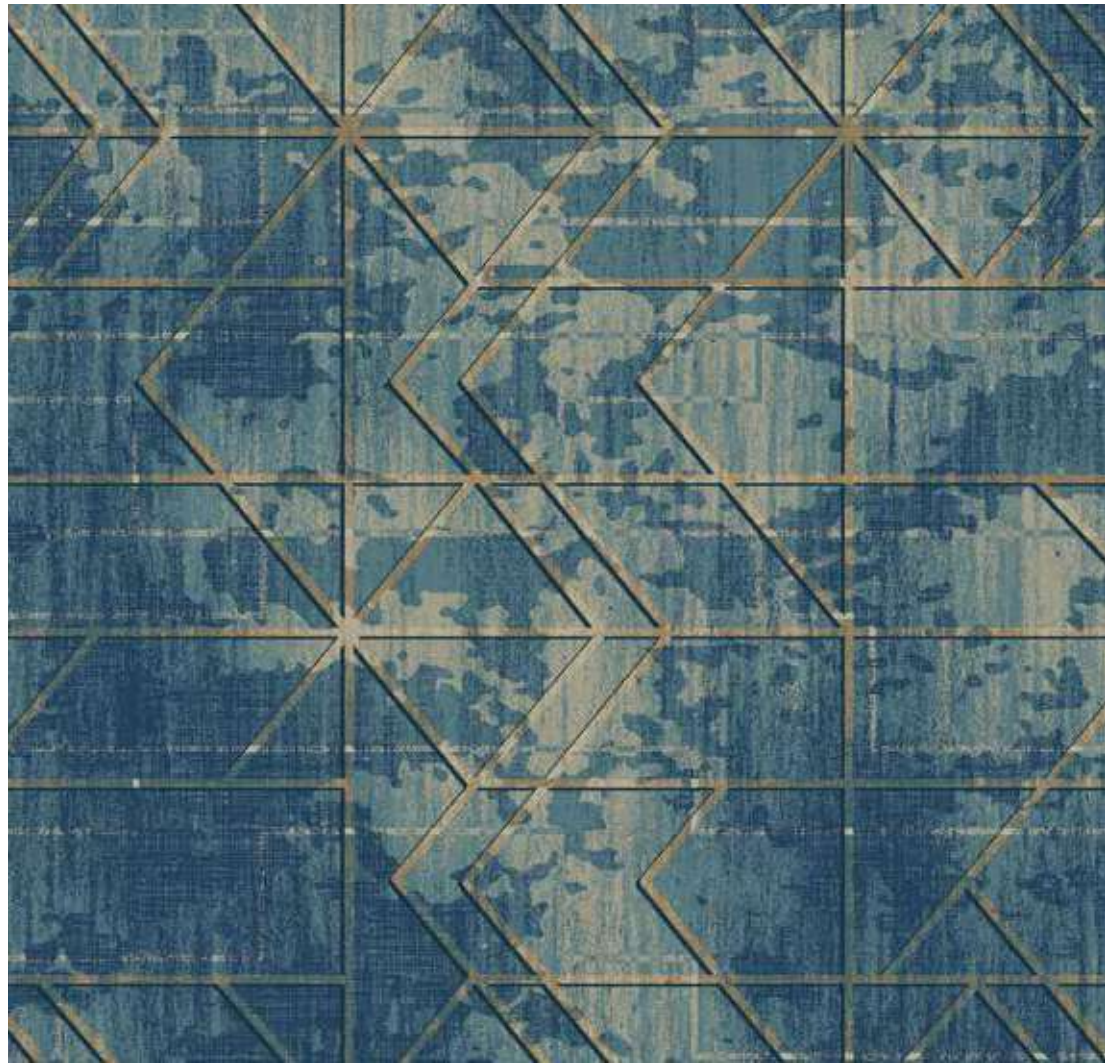
## URBAN FRACTALS

WF1120



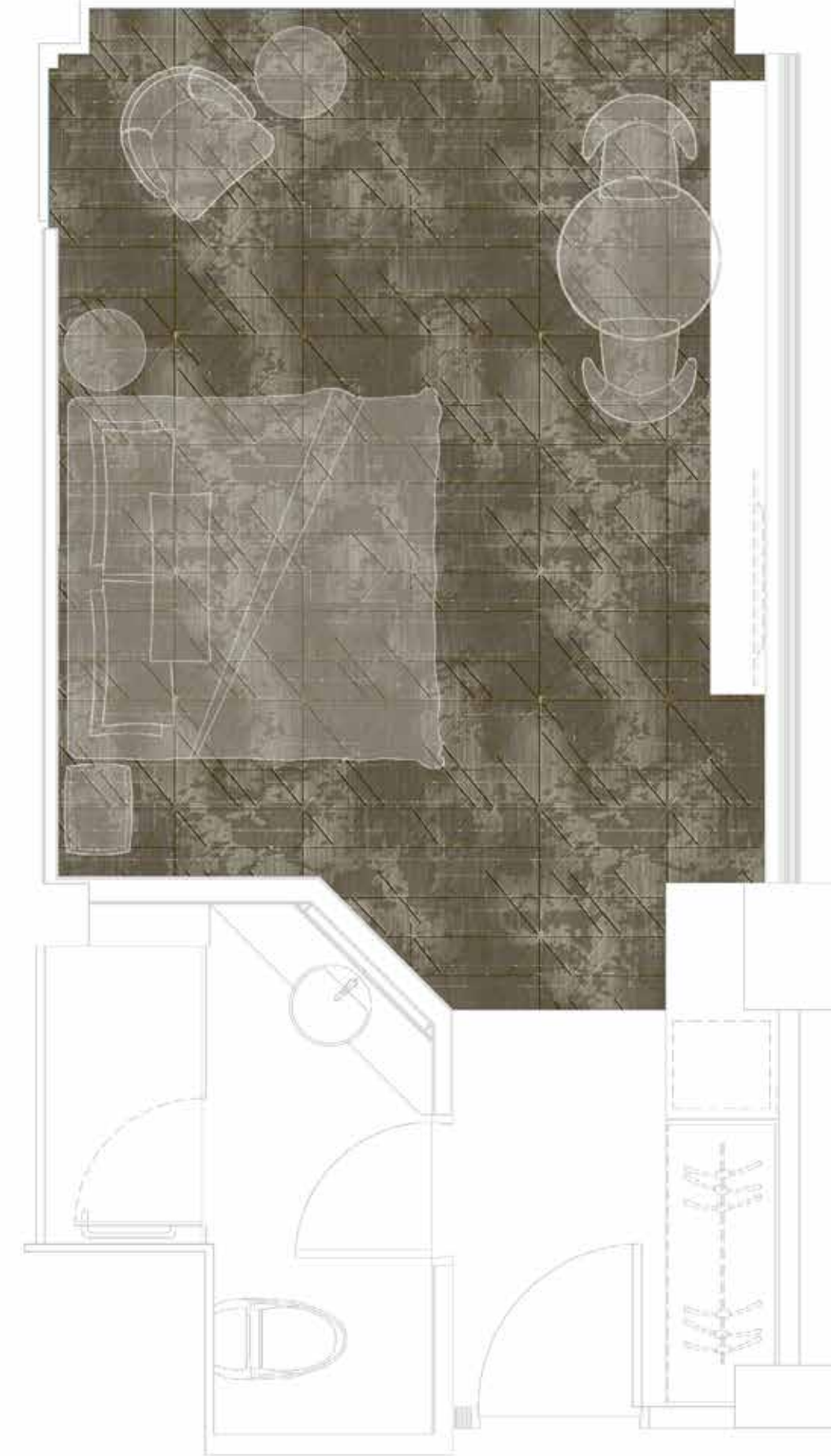
WF1120-001  
2x2 mtrs

WF1120-002  
2x2 mtrs



WF1120-003  
2x2 mtrs

WF1120-004  
2x2 mtrs



WF1120-004

EARTH'S PALETTE, REDEFINING HARMONY.



# GRID DRIFT

## GRID DRIFT

WF1121



WF1121-001  
2x2 mtrs

WF1121-002  
2x2 mtrs



WF1121-003  
2x2 mtrs

WF1121-004  
2x2 mtrs



WF1121-003

STRUCTURED BEAUTY, UNBOUND CREATIVITY.



# TERRATONE

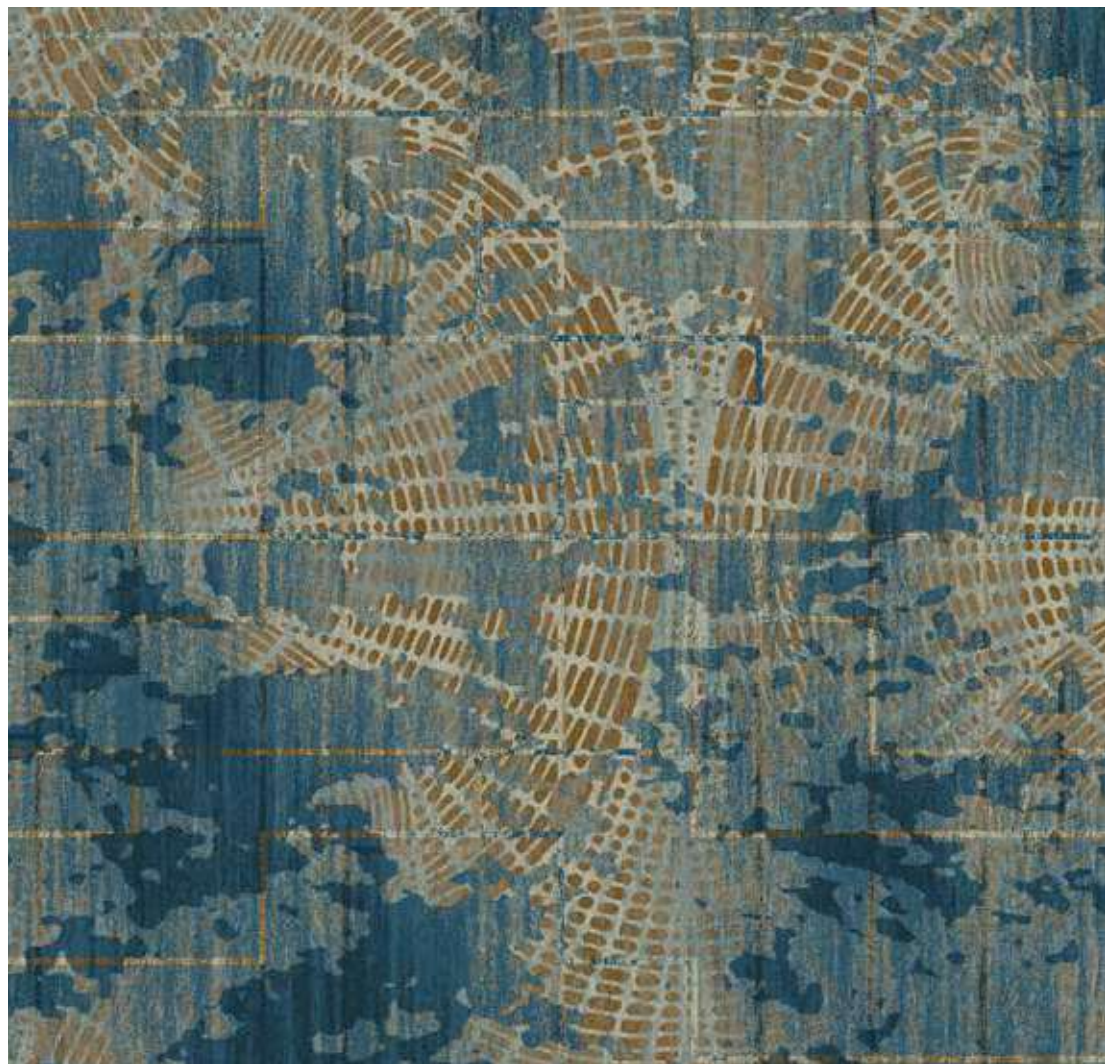
## TERRATONE

WF1122



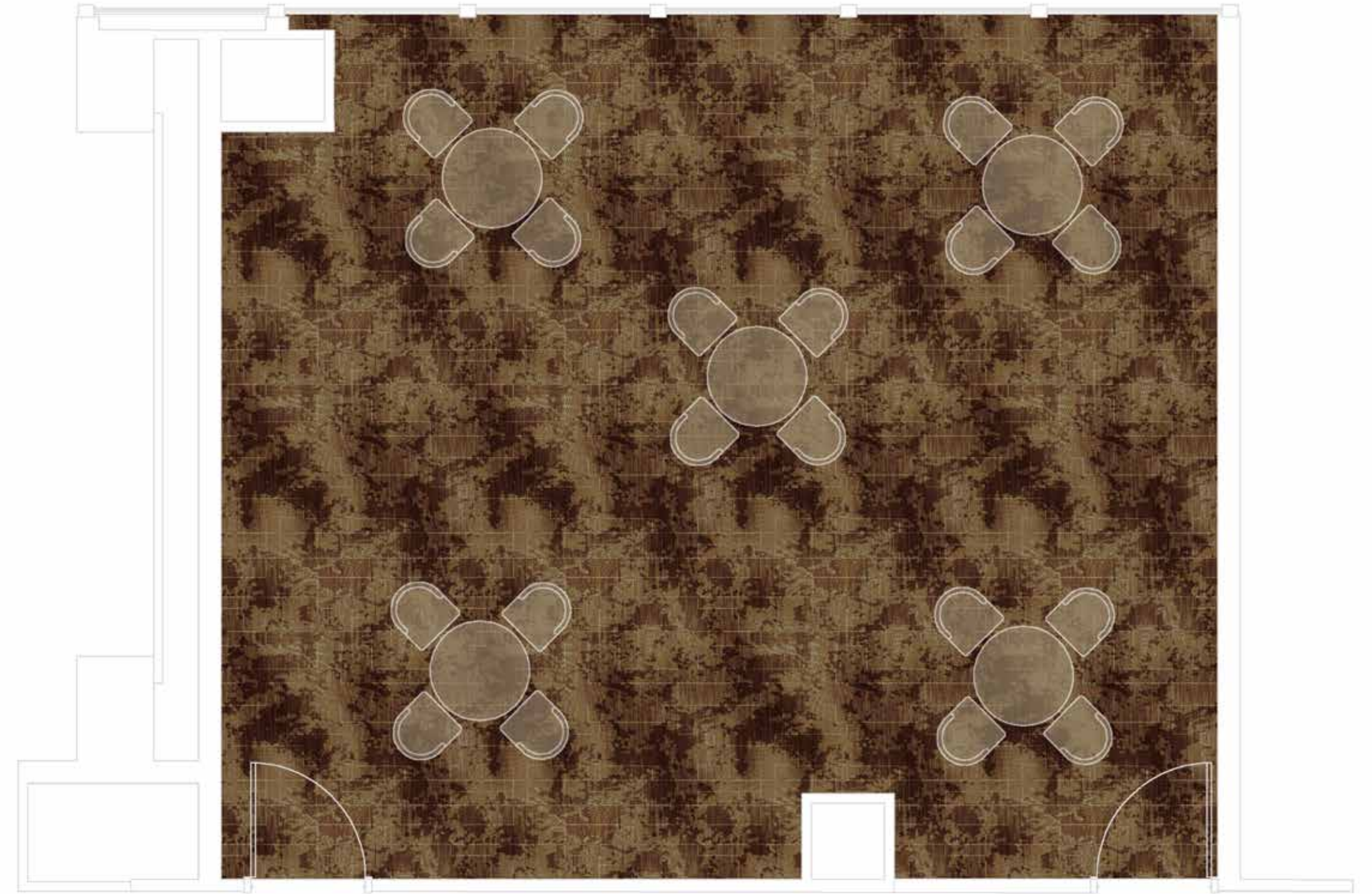
WF1122-001  
2x2 mtrs

WF1122-002  
2x2 mtrs



WF1122-003  
2x2 mtrs

WF1122-004  
2x2 mtrs



CONTOURS THAT CAPTURE THE ESSENCE. \_\_\_\_\_



WF1122-001

# TERRA FRACTA

## TERRA FRACTA

WF1123



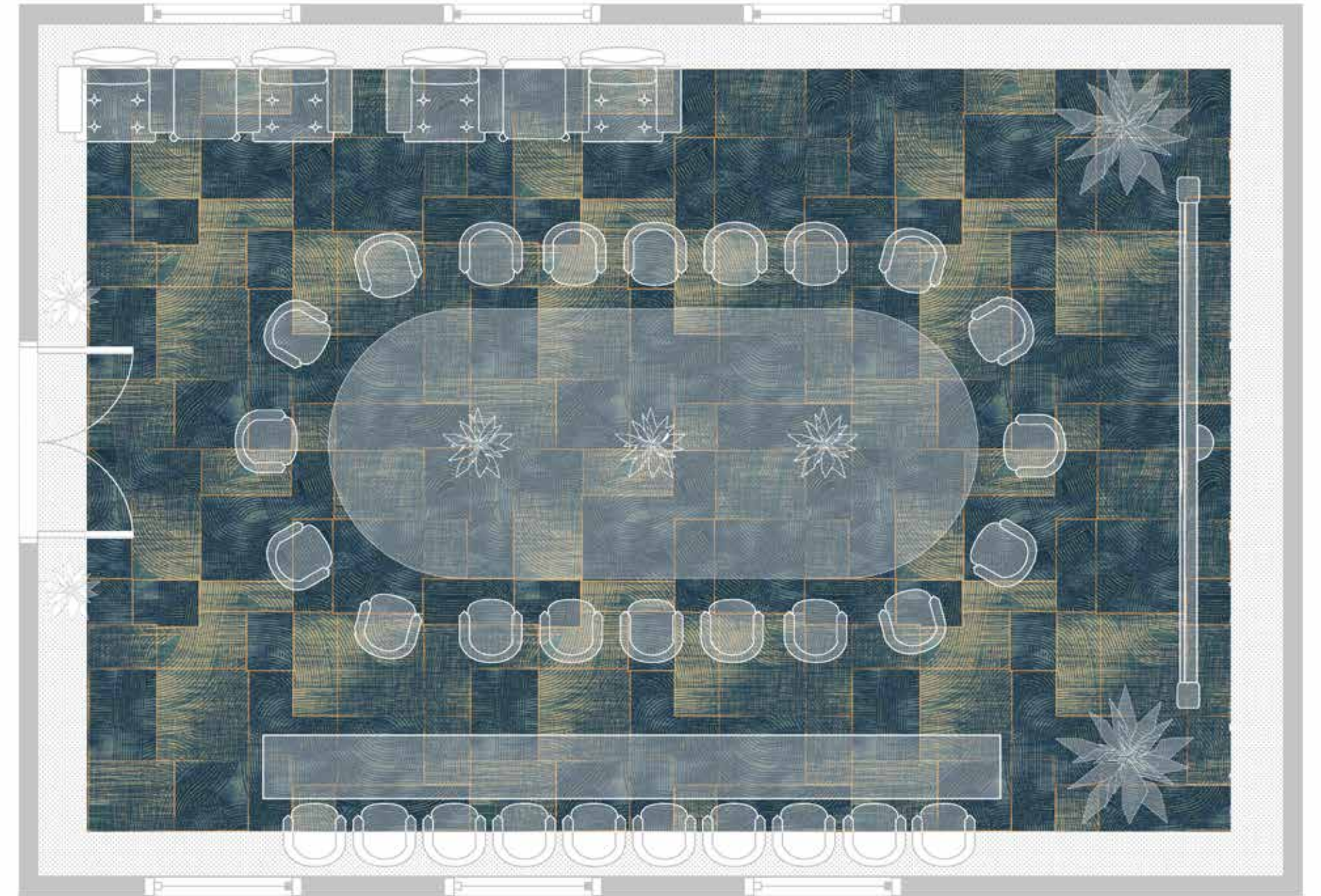
WF1123-001  
2x2 mtrs

WF1123-002  
2x2 mtrs



WF1123-003  
2x2 mtrs

WF1123-004  
2x2 mtrs



ANGLES OF ART, CURVES OF NATURE. \_\_\_\_\_



WF1123-003

Thank you for reading

# SURFACE STORIES

---

EDITION 3

For more information on our featured designs, visit our website.  
Stay connected with us on social media for the latest updates  
and design inspiration.

 [welspunflooring.com](https://welspunflooring.com)

 [welspunflooring](https://www.instagram.com/welspunflooring)

