

Surface



WELSPUN
FLOORING

H-15

H-12

Nature provides abundance of inspiration.

Evoking the ultimate in raw earth surface to man-made structure -Surface by Welspun is a sophisticated set of designs capturing that narrative and translated into fascinating carpet designs- that will last, impress and give visual pleasure.

D-32

C-32

Pattern and colours replicates the tactility and texture of natural materials and manipulate them to create a desired look which are aesthetically pleasing as well as mimic the nature to create biophilic spaces.

Surface collection -infusing natural surfaces within interior spaces, as nature has become the great unifier and healer in a period of upheaval, and this direction explores our symbolic relationship with it.

J-16

J-20

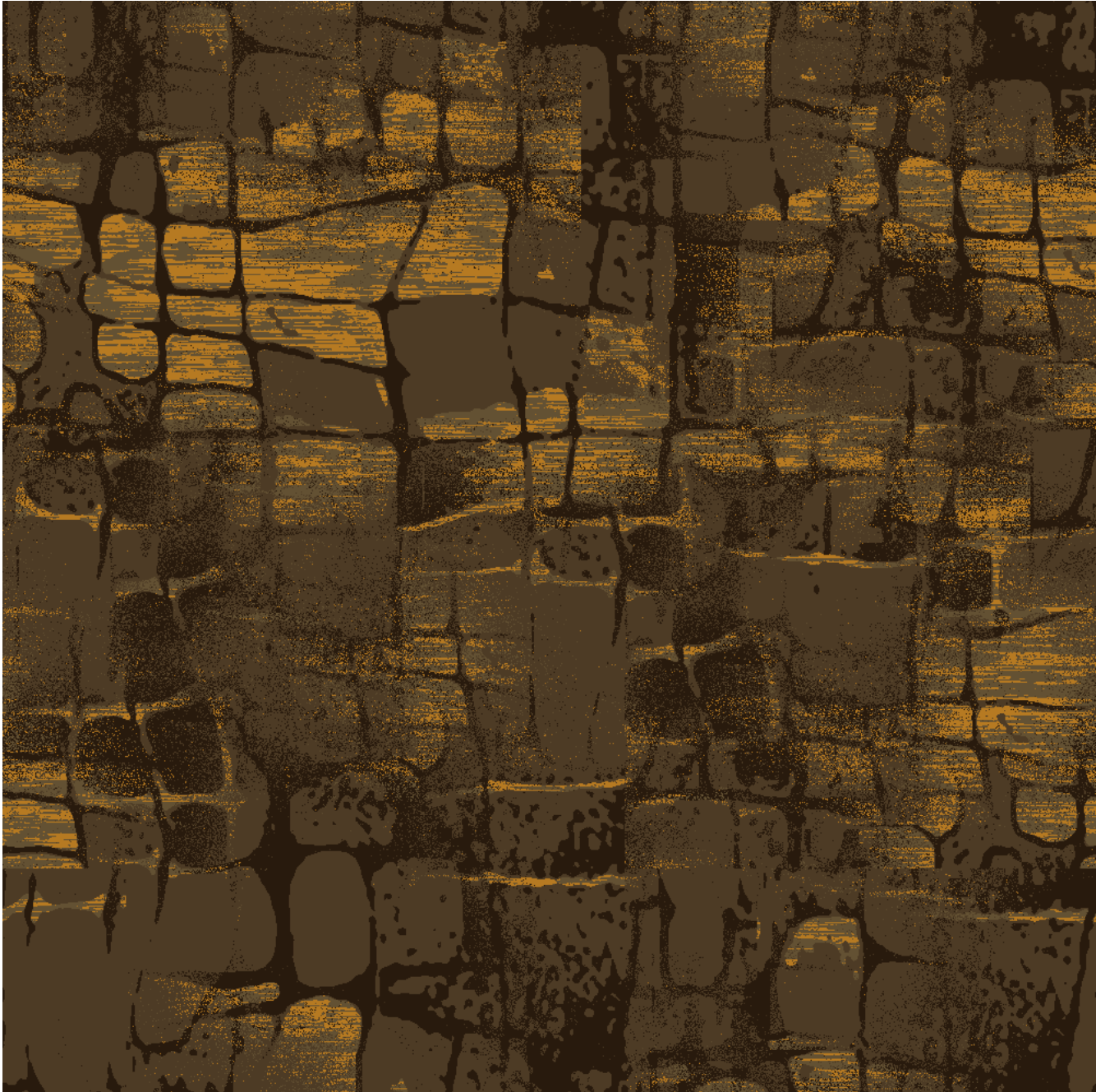
J-13

Surface





OUTWARD



SURFACE -1

WA1352-001

BIOPHILIC



SURFACE -2

WA1353-001



FACET

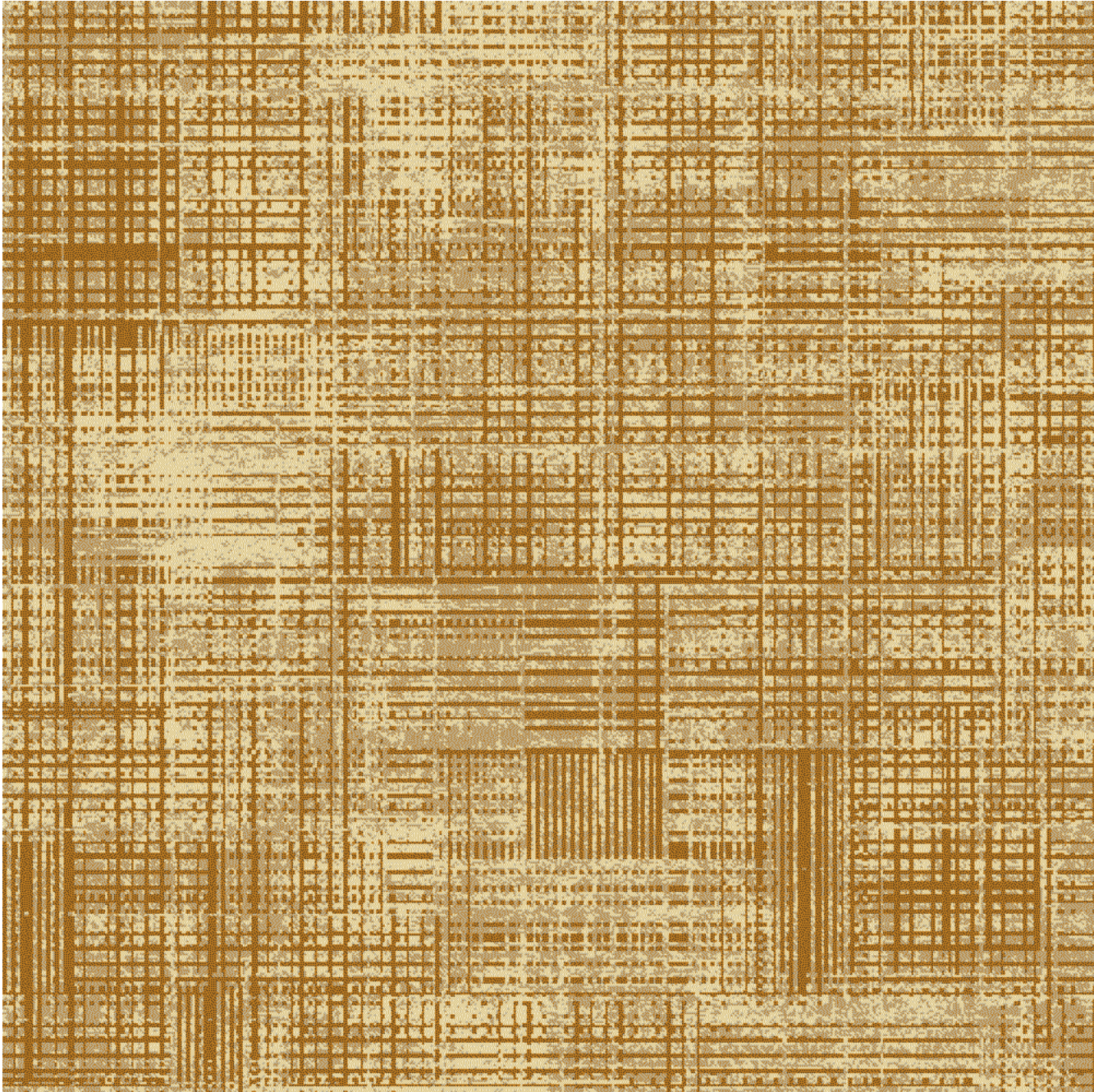


SURFACE -3

WA1354-001



PROFOUND

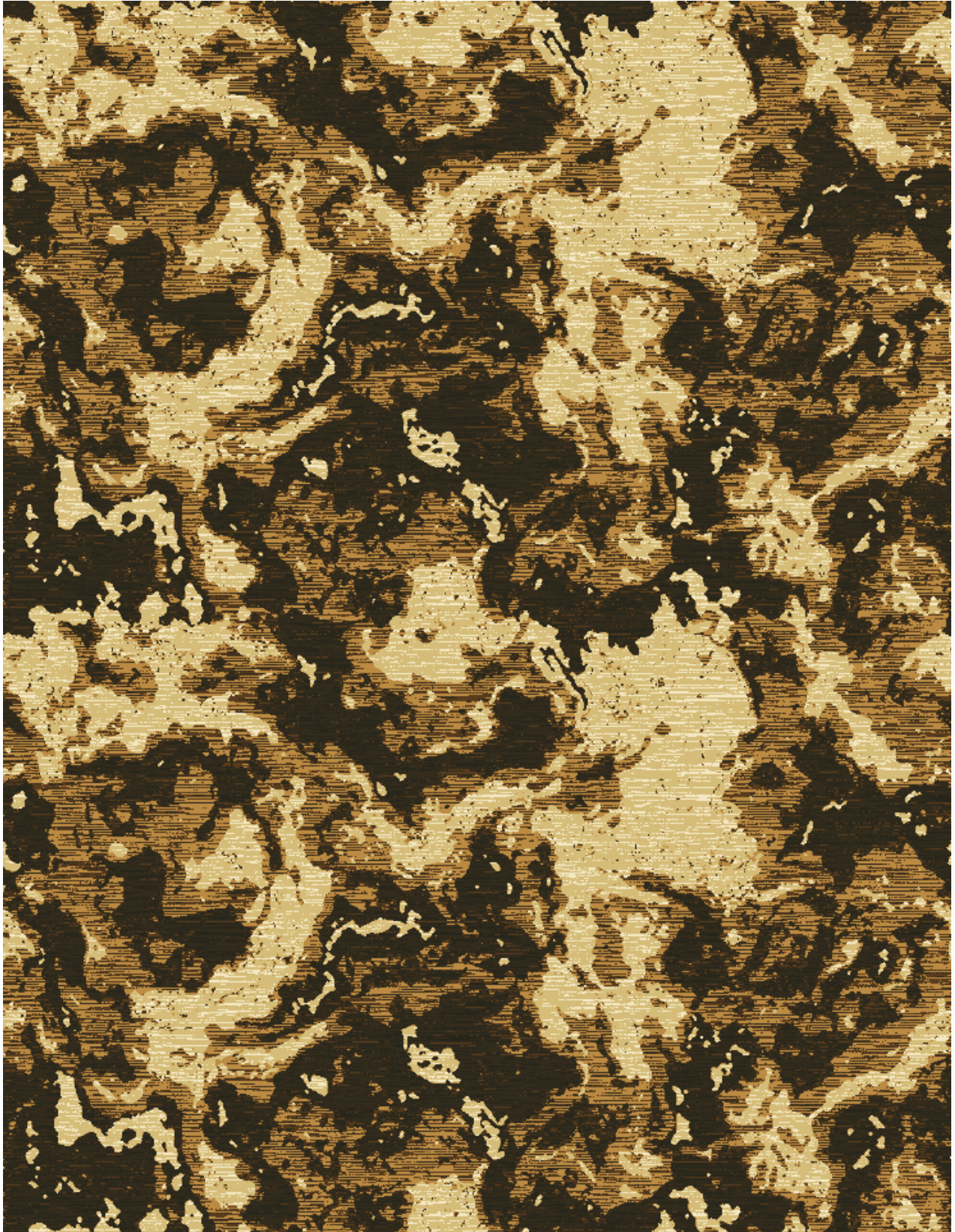


SURFACE 4

WA1355-001

A close-up photograph of a tree trunk, showing the intricate textures of the wood grain and the peeling bark. The wood grain is composed of horizontal layers, with some areas showing a lighter, more uniform texture and others showing more pronounced, wavy patterns. The bark is peeling in several places, revealing the underlying wood. The overall color palette is warm, ranging from light tan to deep brown.

ORGANIC

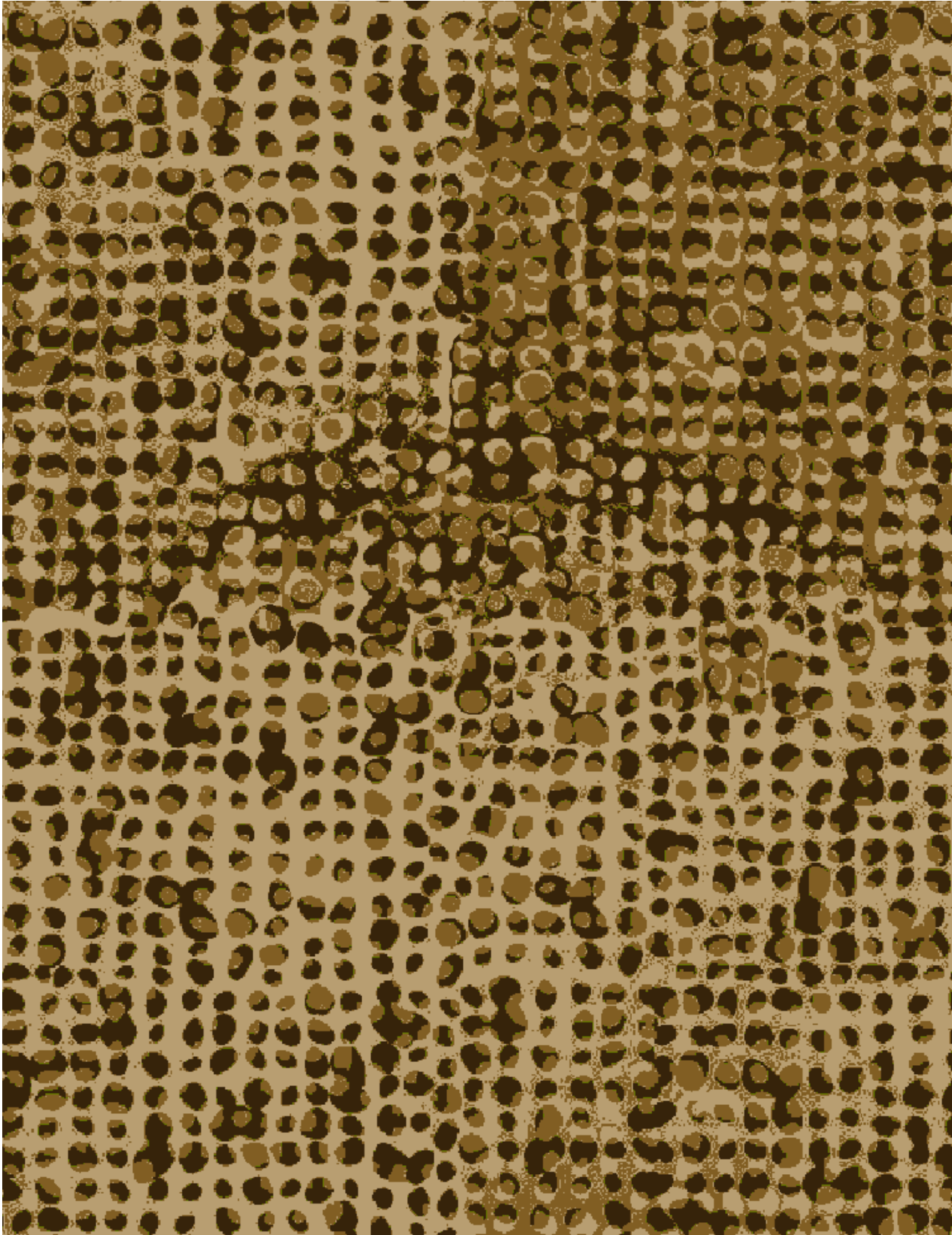


SURFACE -5

WA1356-001



PHILLIA

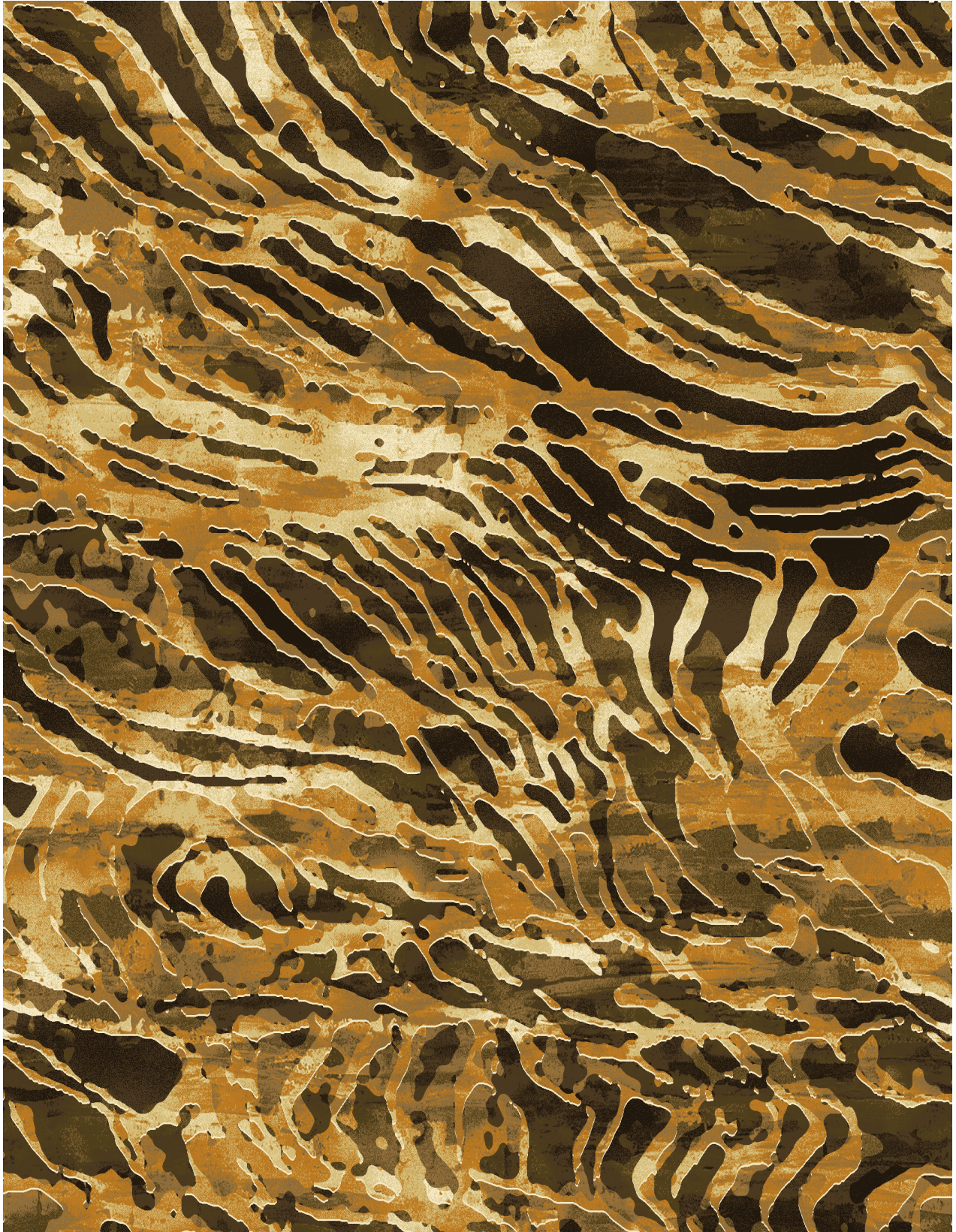


SURFACE -6

WA1357-001



TERRAIN

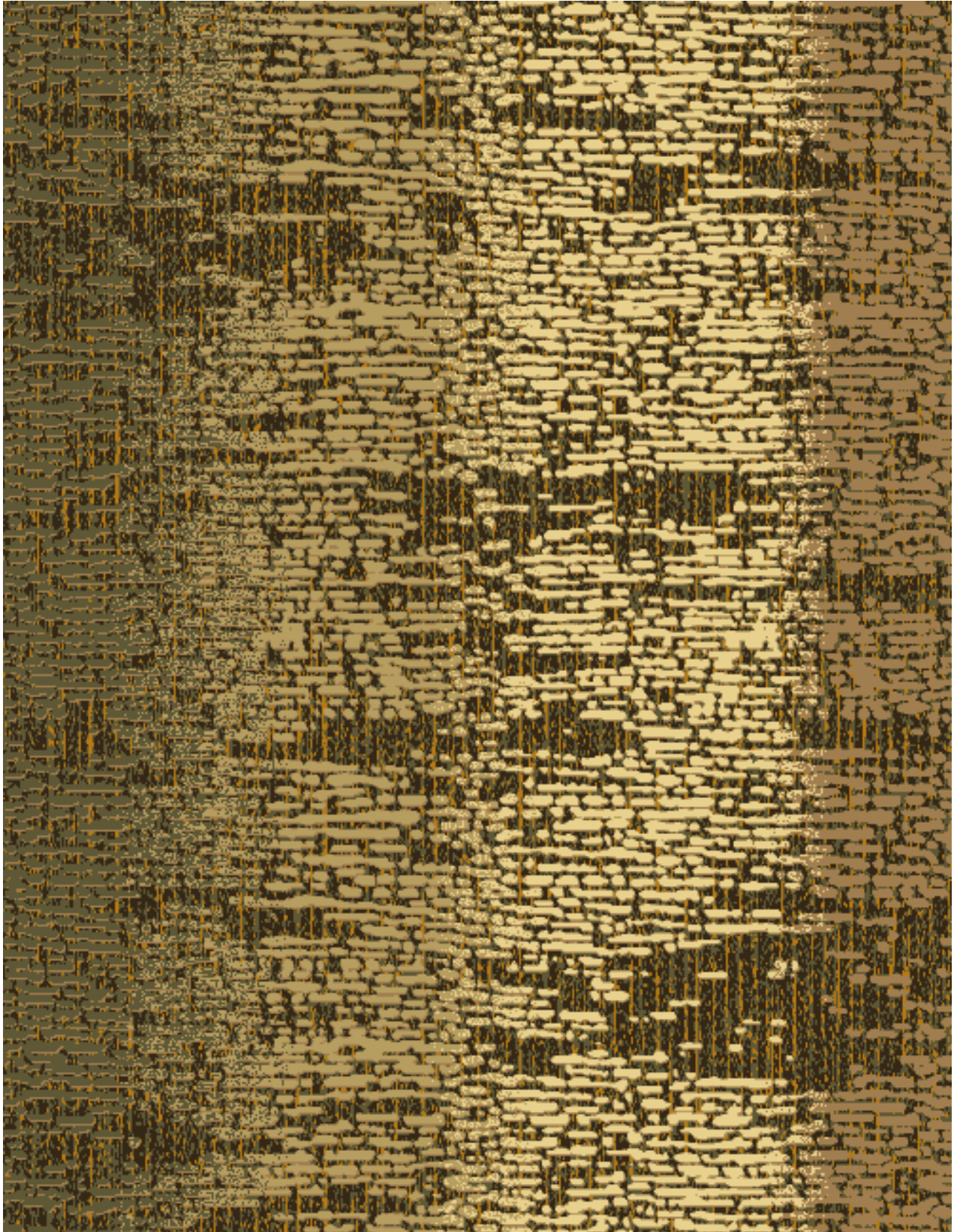


SURFACE -7

WA1358-001

A photograph of a forest with several tree trunks in the foreground. The trunks are covered in patches of bright yellow-green moss. The background is filled with more trees and foliage, creating a dense forest scene. The word "NATURAL" is overlaid in the center in a light, sans-serif font.

NATURAL



SURFACE -8

WA1359-001

A photograph of a wall with peeling paint and exposed dark wood, with the word 'PAST' overlaid in the center. The wall is divided into three horizontal sections by two horizontal lines. The top and bottom sections show dark, textured wood with peeling paint. The middle section is a lighter, off-white color with some peeling paint and small dark spots. The word 'PAST' is written in a bold, black, sans-serif font in the center of the middle section.

PAST



SURFACE -9

WA1360-001

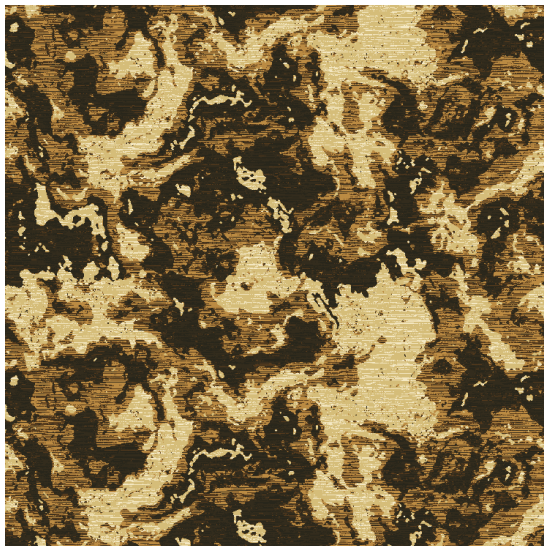
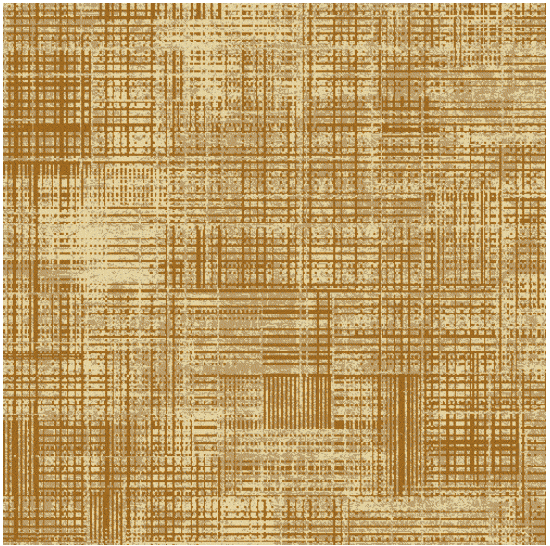
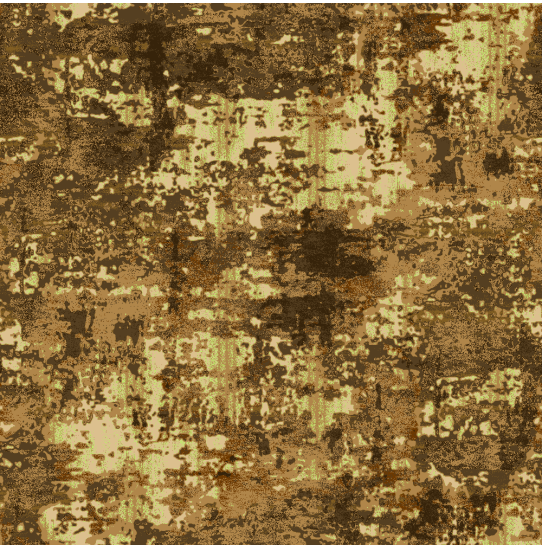
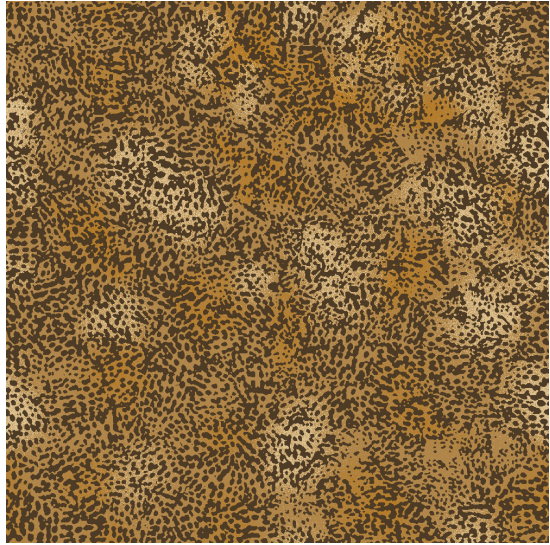
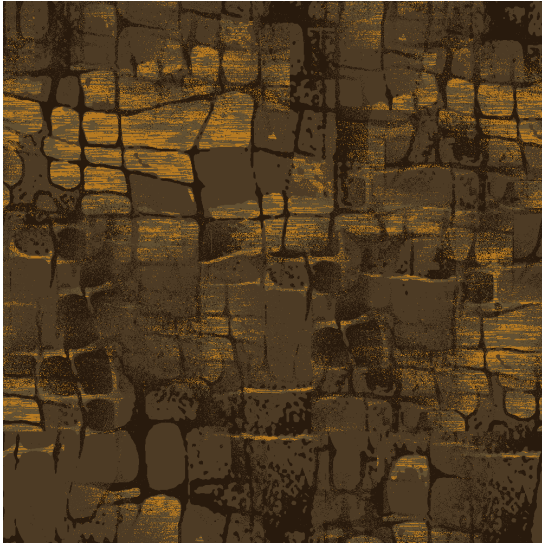
The background is a complex, abstract composition of various textures and brushstrokes in shades of gold, brown, and tan. The strokes are thick and expressive, creating a sense of depth and movement. The overall effect is reminiscent of a textured surface like canvas or a close-up of a painted wall.

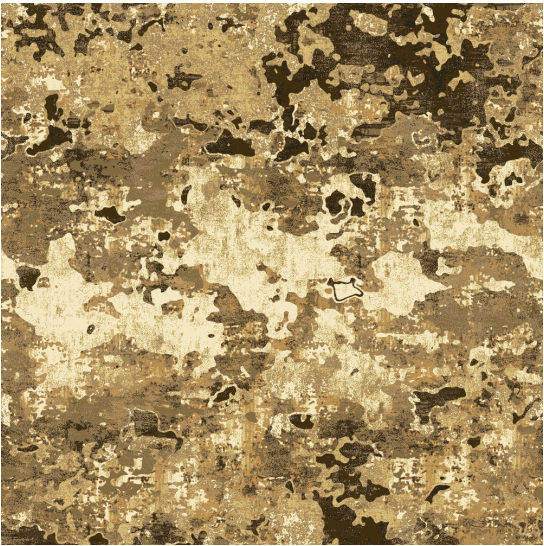
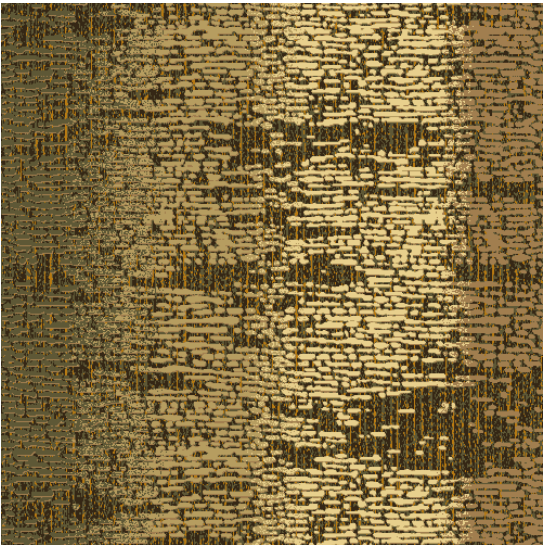
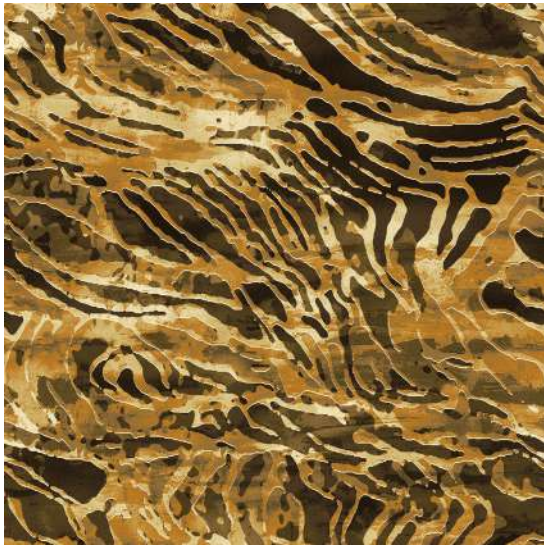
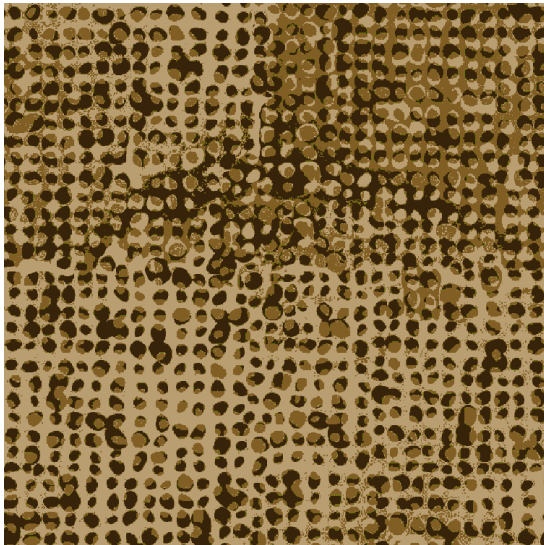
STROKES



SURFACE -10

WA1361-001







For more information

visit

designstudio.welspunflooring.com

welspunflooring.com

For Product Enquiry
Toll Free: 18001-2011-61
contact_flooring@welspun.com

Visit us at :
designstudio.welspun.com
welspunflooring.com

