

NEXUS

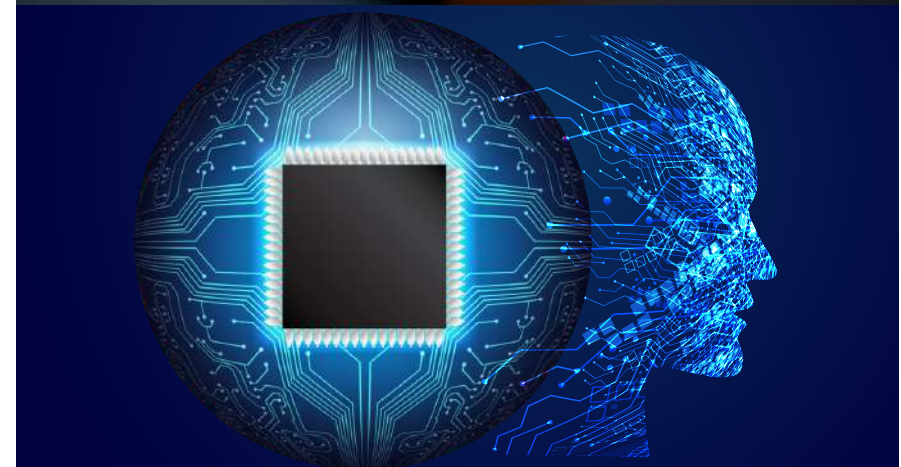
TRANSFORMING FLOOR INTO DIGITAL ART

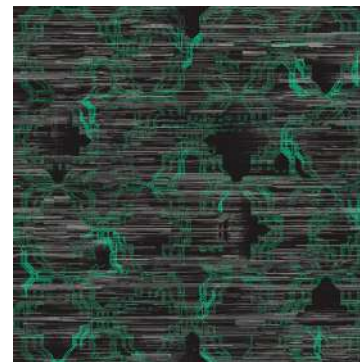
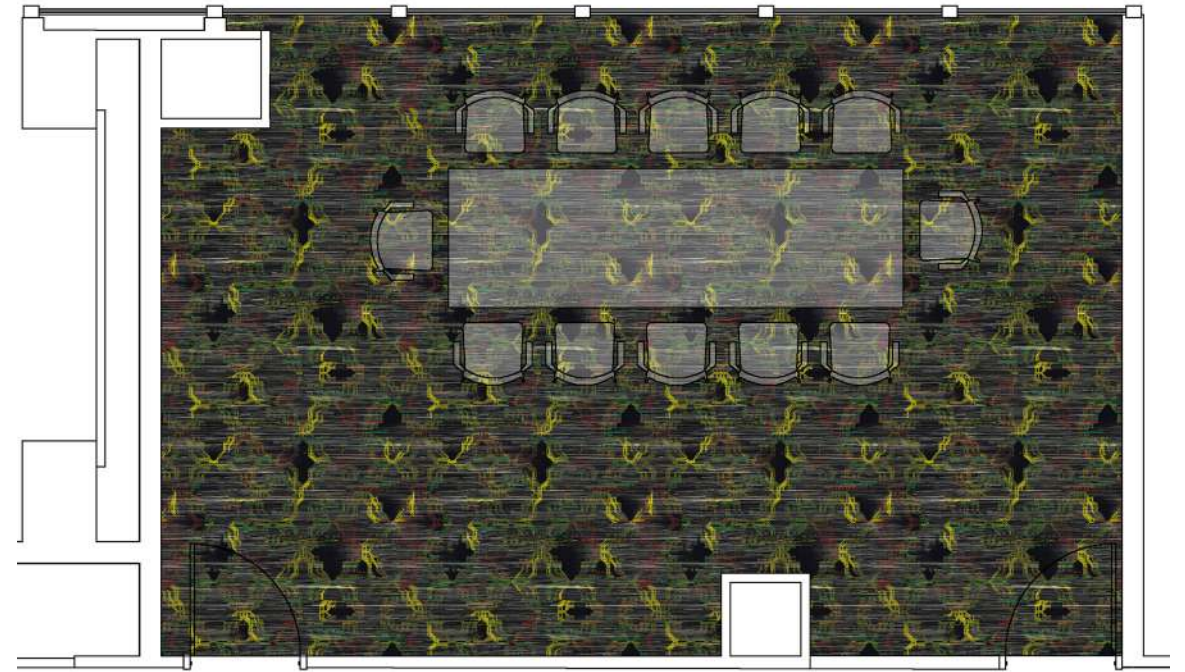
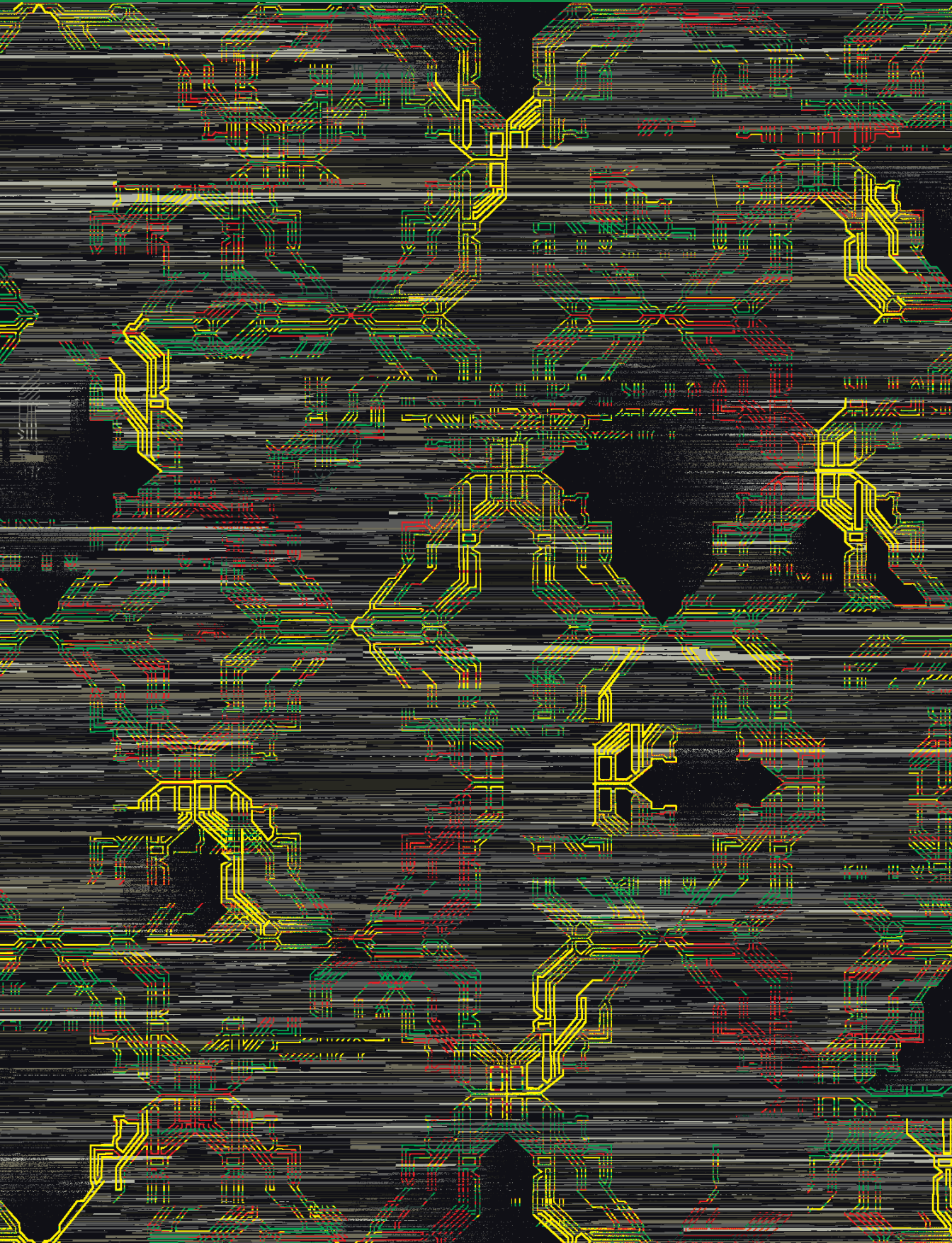
The Story

In a world captivated by artificial intelligence, Welspun Flooring's "NEXUS" collection reimagines floor coverings, delving into the mesmerizing universe of AI neural networks and binary codes. Our designers intricately weave neural pathways and digital signals into the fabric of our carpets, translating these inspirations into tangible elegance.

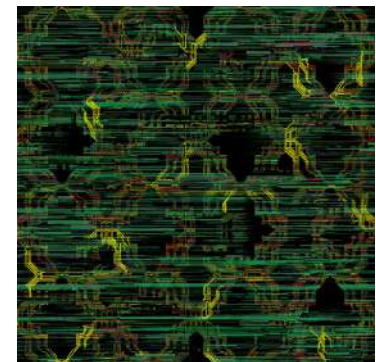
These avant-garde designs transcend traditional flooring, transforming rooms into vibrant sanctuaries of modernity. Each thread mirrors the sophistication of AI, fostering an atmosphere where innovation meets comfort. Experience the synergy of technology and aesthetics underfoot, as Nexus adorns your floors and ignites the spirit of cutting-edge intelligence in every corner of your space.

NEXUS Inspired by the world's current fascination of machine intelligence - AI.



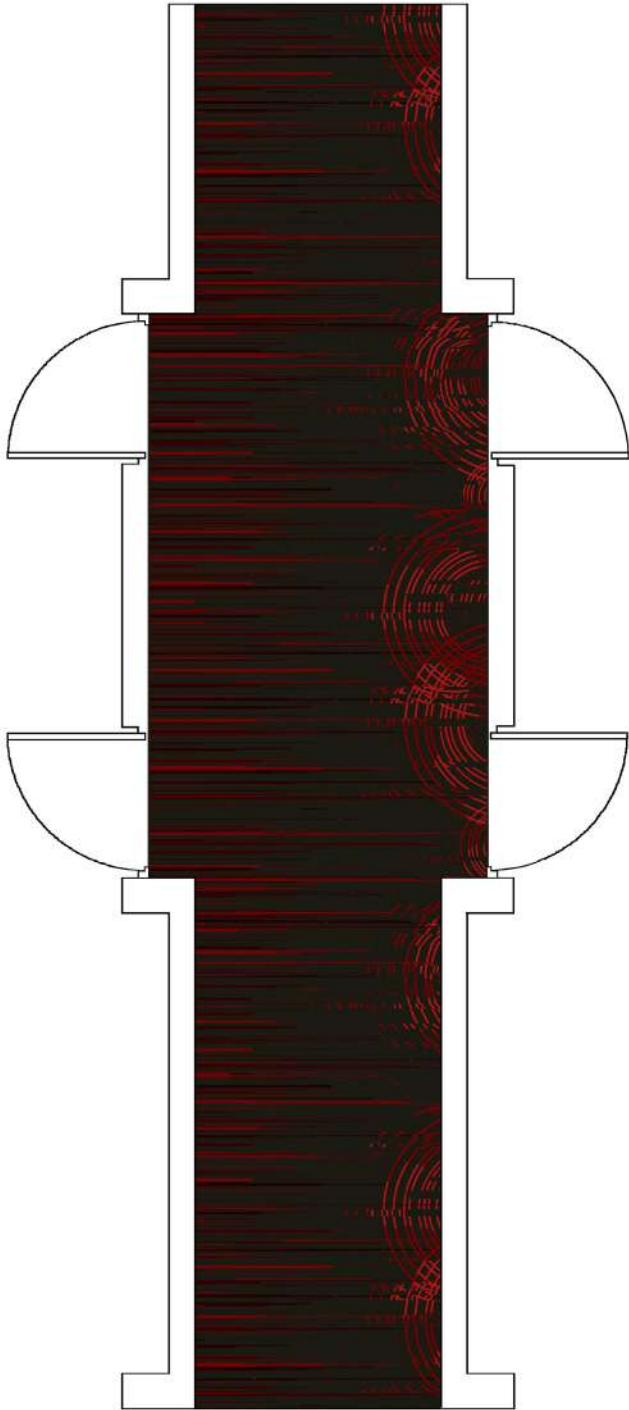
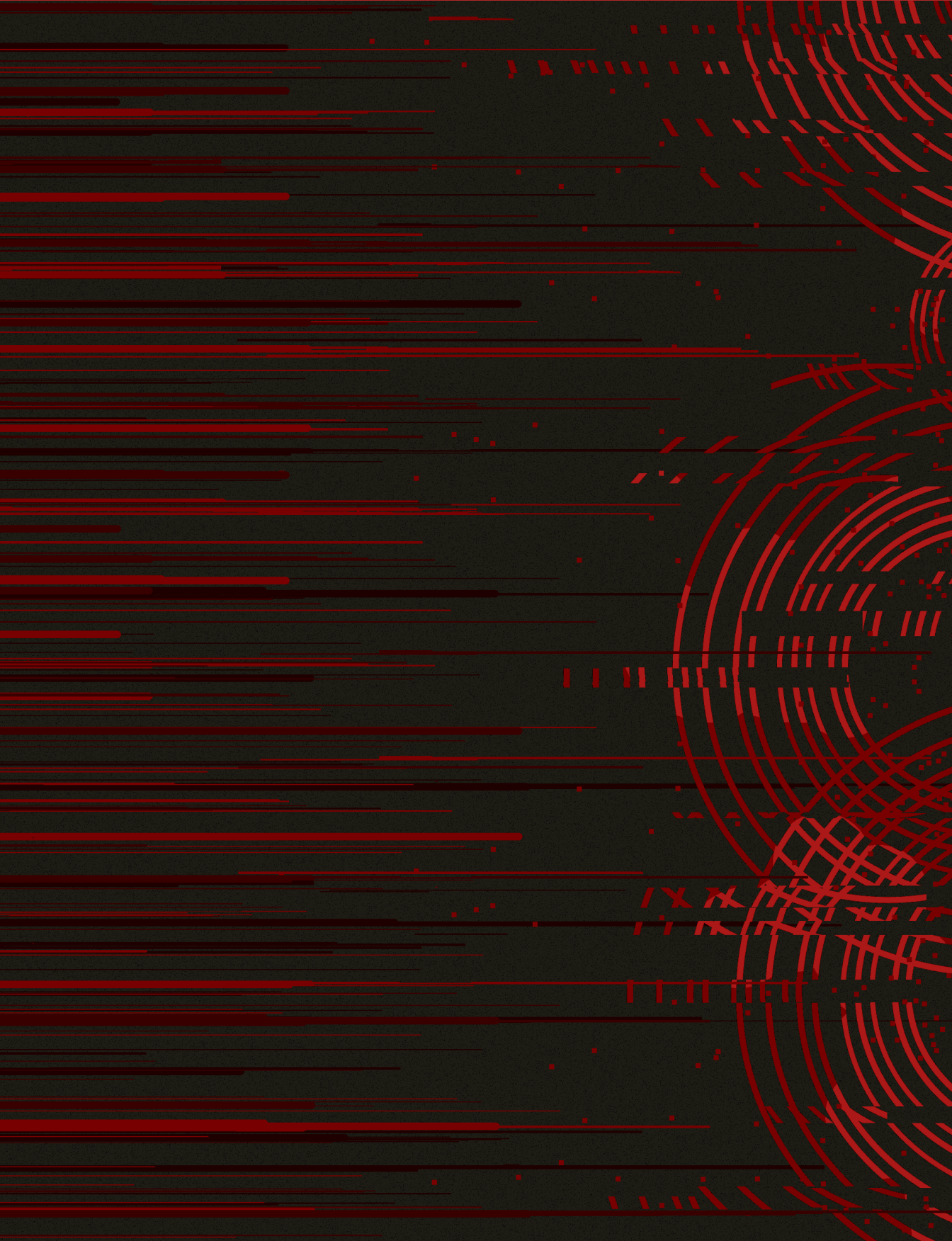


WA6666-002

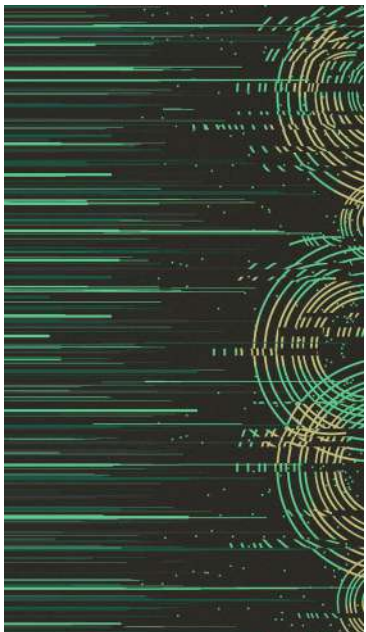


WA6666-003

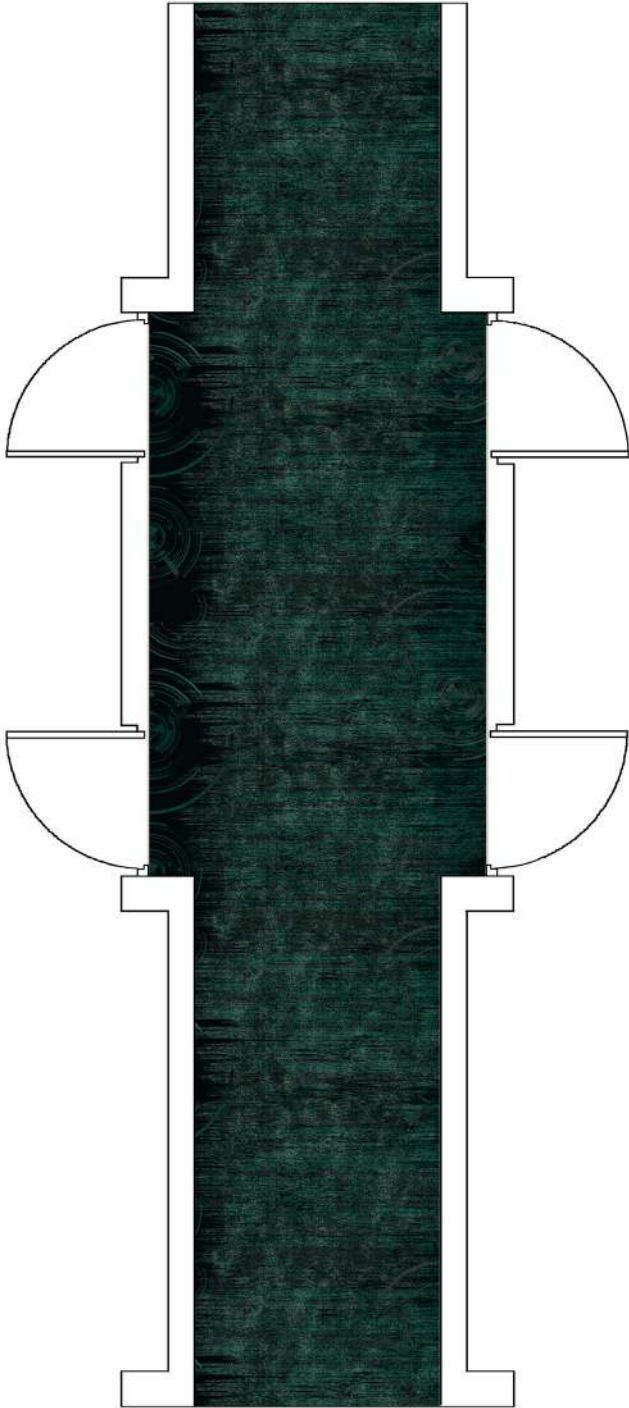
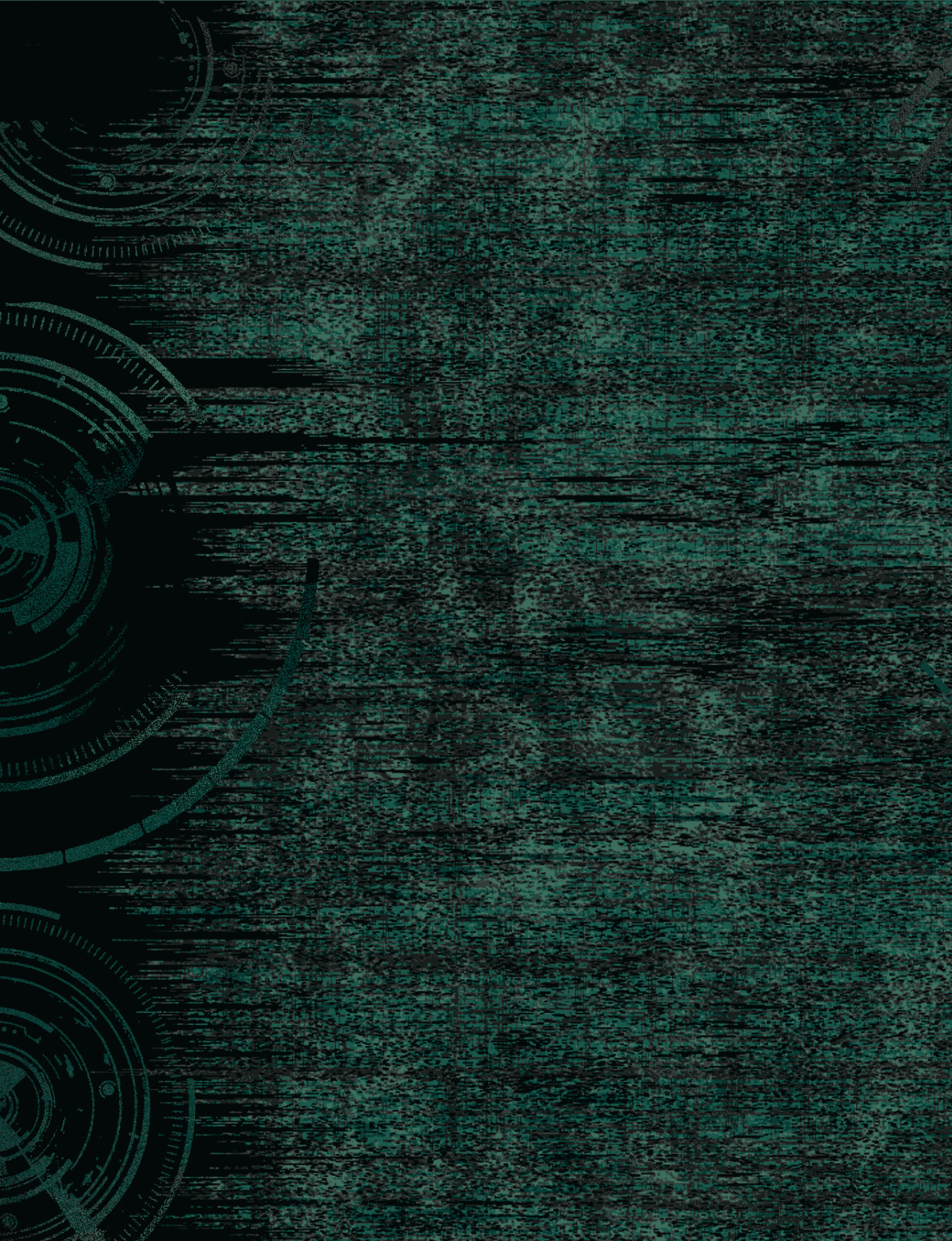




WA6667-001



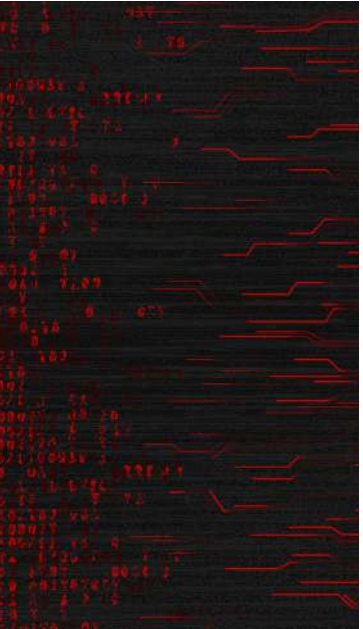
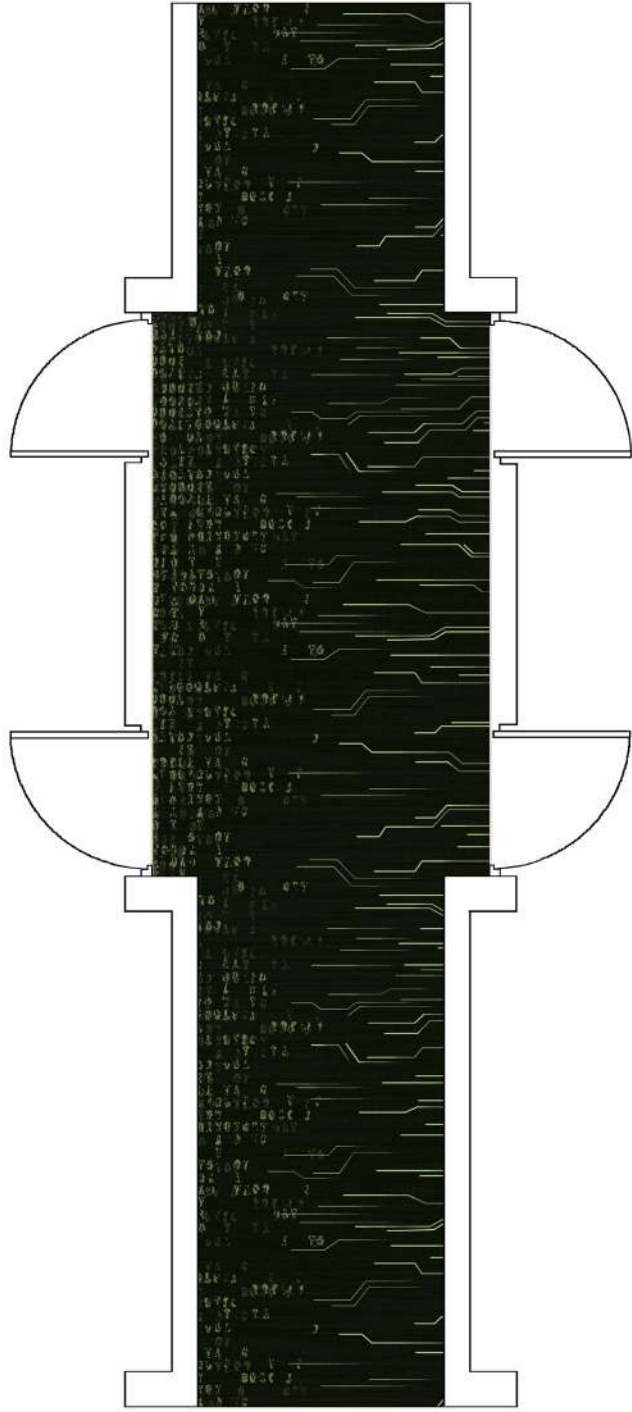
WA6667-002



WA6668-001



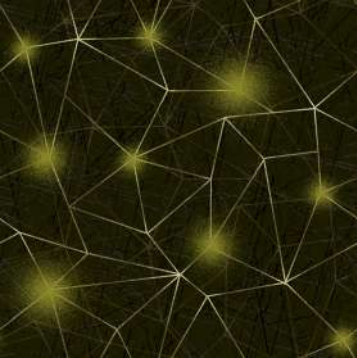
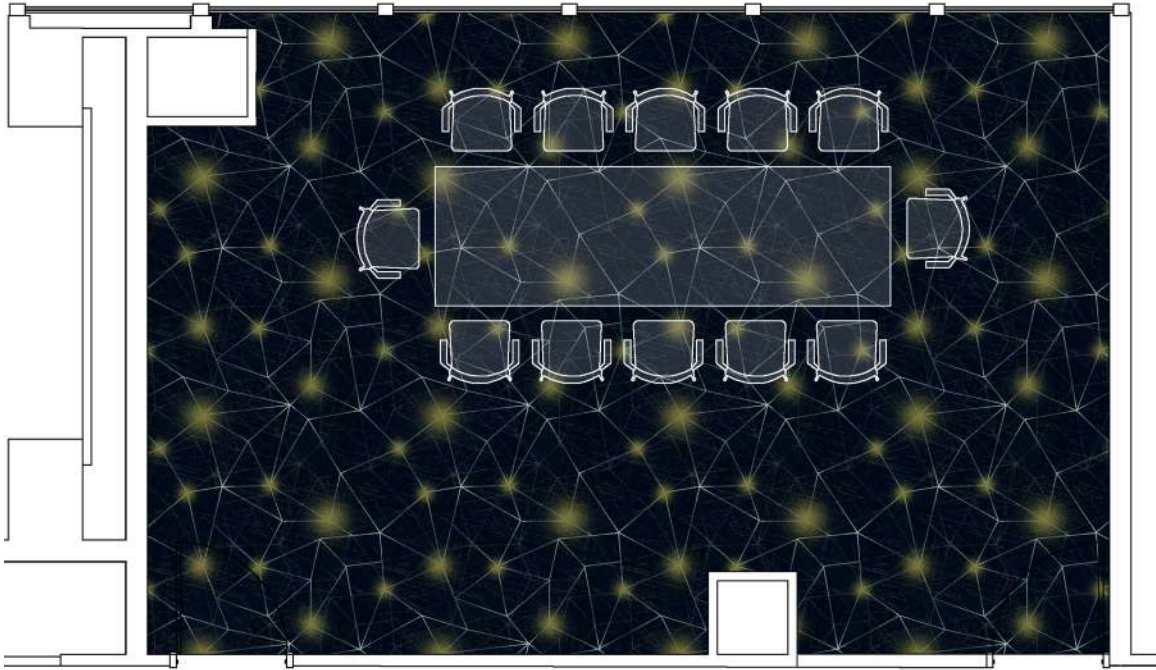
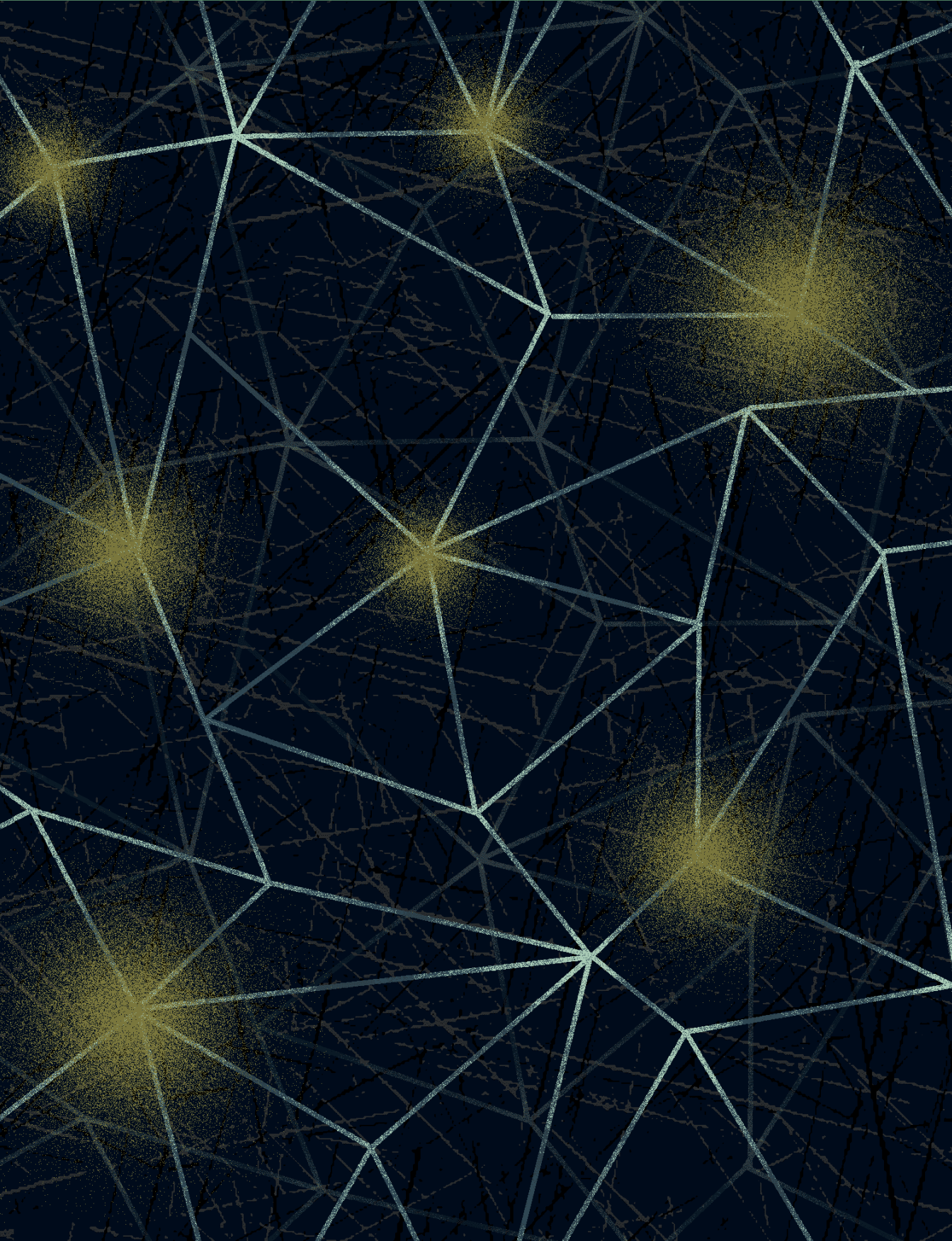
WA6668-002



WA6669-001



WA6669-002

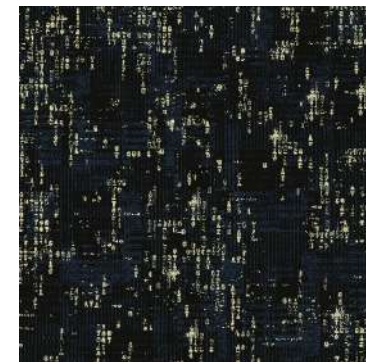
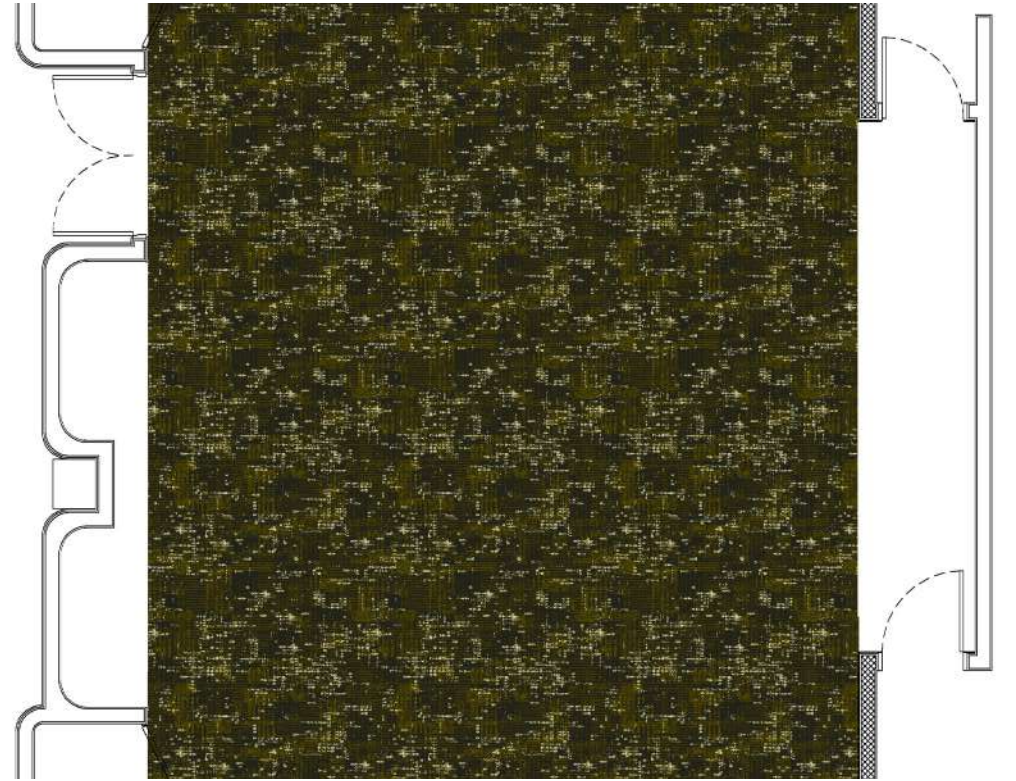
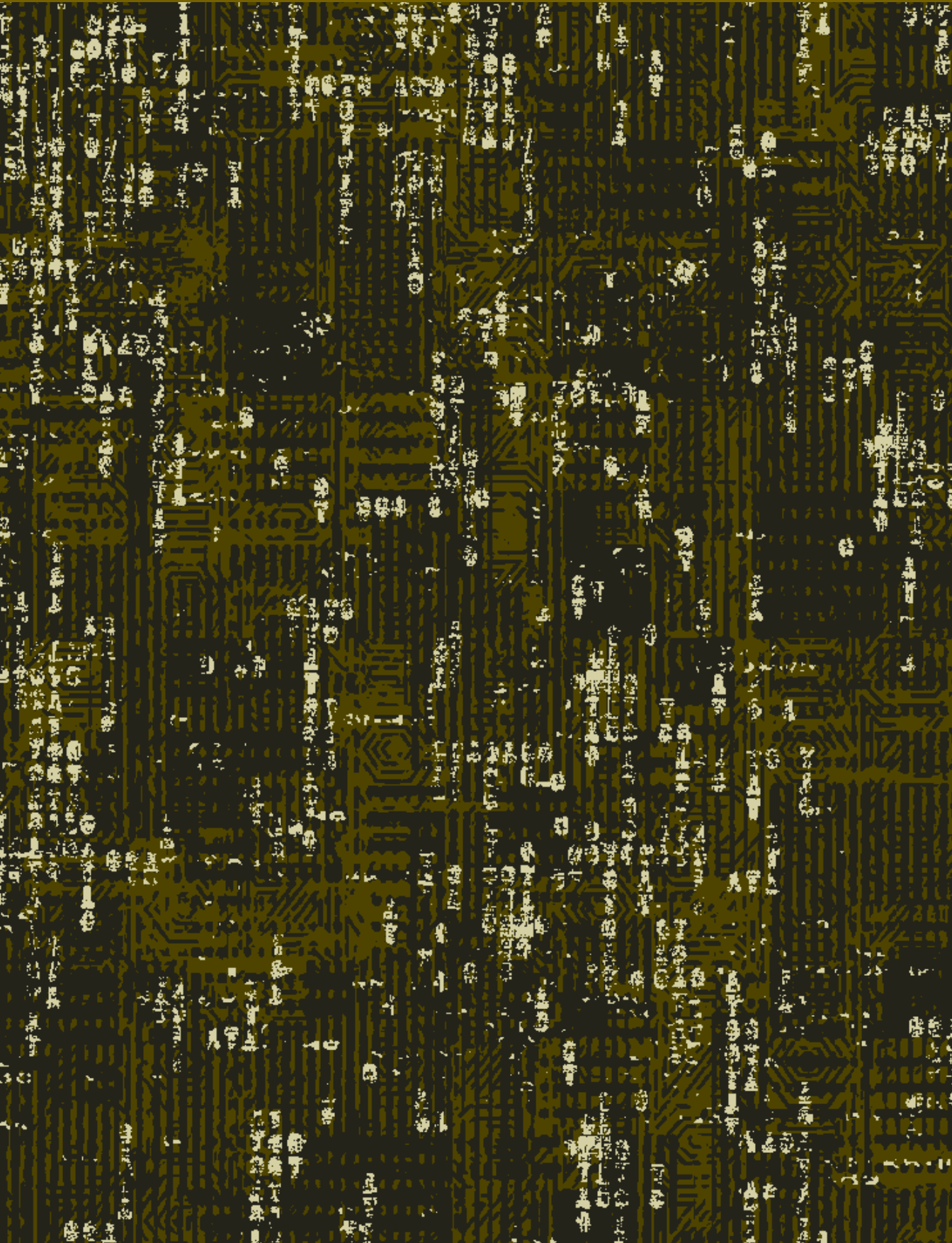


WA6666-002

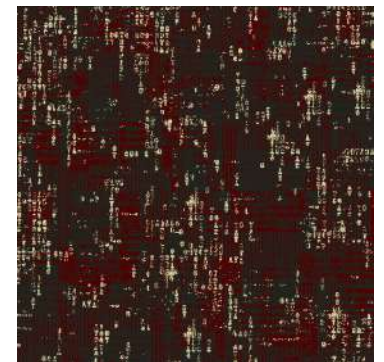


WA6666-003





WA6671-001

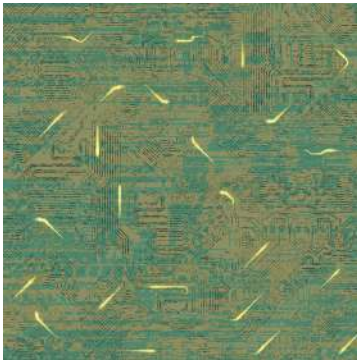
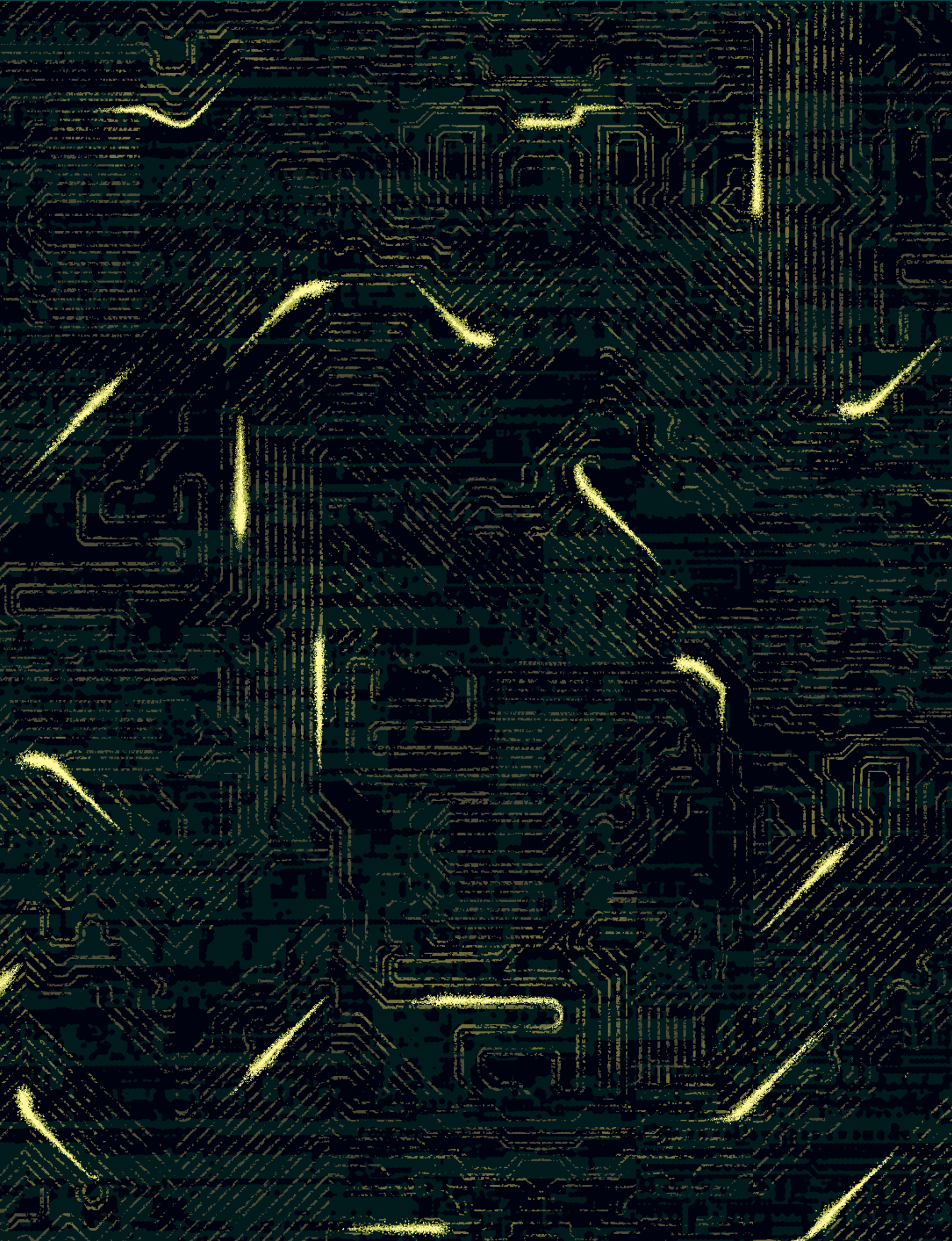


WA6671-003

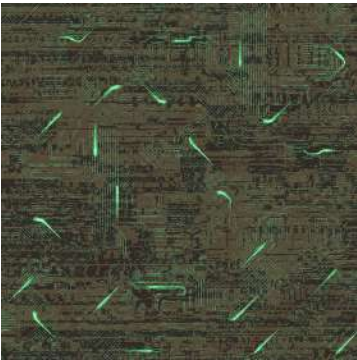


VOLTAGE

WA6672-001 | 2 X 3 MTRS



WA6672-002



WA6672-003

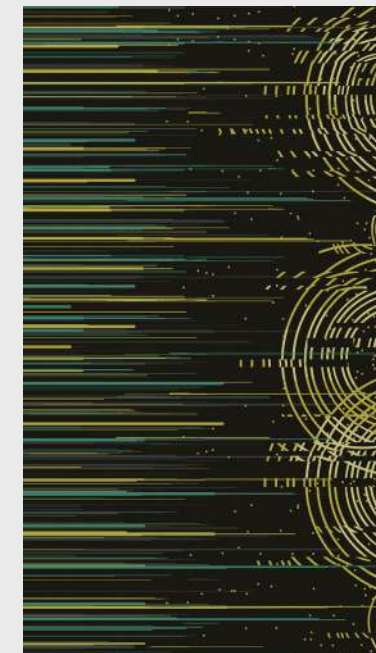
PRODUCT SPECIFICATION

Fiber	100% Polyamide 6
Product Type	Cut & Loop
Pile (GSM)	590 to 1500
Total (GSM)	1776 to 2686
Pile Height (mm)	7 to 10
Tufting Type	1/8 & 1/10
Indicates	+/- 5%

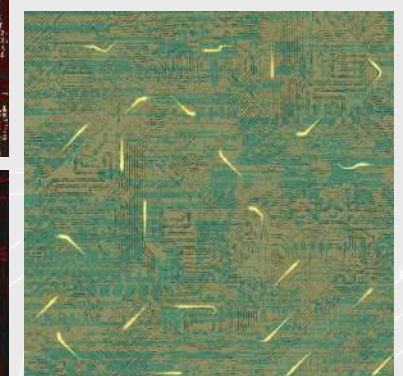
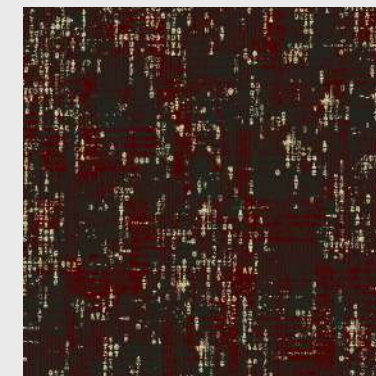
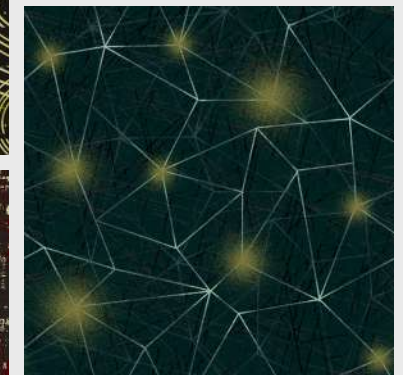
TEST REPORT SUMMARY

Test Name	Method	Test Name	Method
Anti Microbial Treatment	AATCC 174 (Part II & III)	Flammability (Pill Test)	ASTM D 2859
Delamination	ASTM D 3936	Flammability (Radiant Panel)	ASTM E 648-06
Tuft Bind	ASTM 1335-67	NBS Smoke Density (Flaming)	ASTM E 662-06
Castor Chair	DIN 54324	Lightfastness	AATCC 16 E
Pile weight	ASTM D 5848-07	Colour fastness to Ozone	AATCC 129
Pile density	ASTM D 5848-07	Colour fastness to NO ₂	AATCC 164-2008
Hexapod	ASTM D 5252-15	Crocking Dry and Wet	AATCC 165-2008
Pile height	ASTM D 5823-05a	Stain fastness	AATCC 175-2008/ITTS 002
Gauge	ASTM D 5793-13	Shampoo Fastness	AATCC 138
Static Electricity	AATCC 134-1996	Water Fastness	AATCC 107
Green Carpet (VOC)	ASTM D 5116		

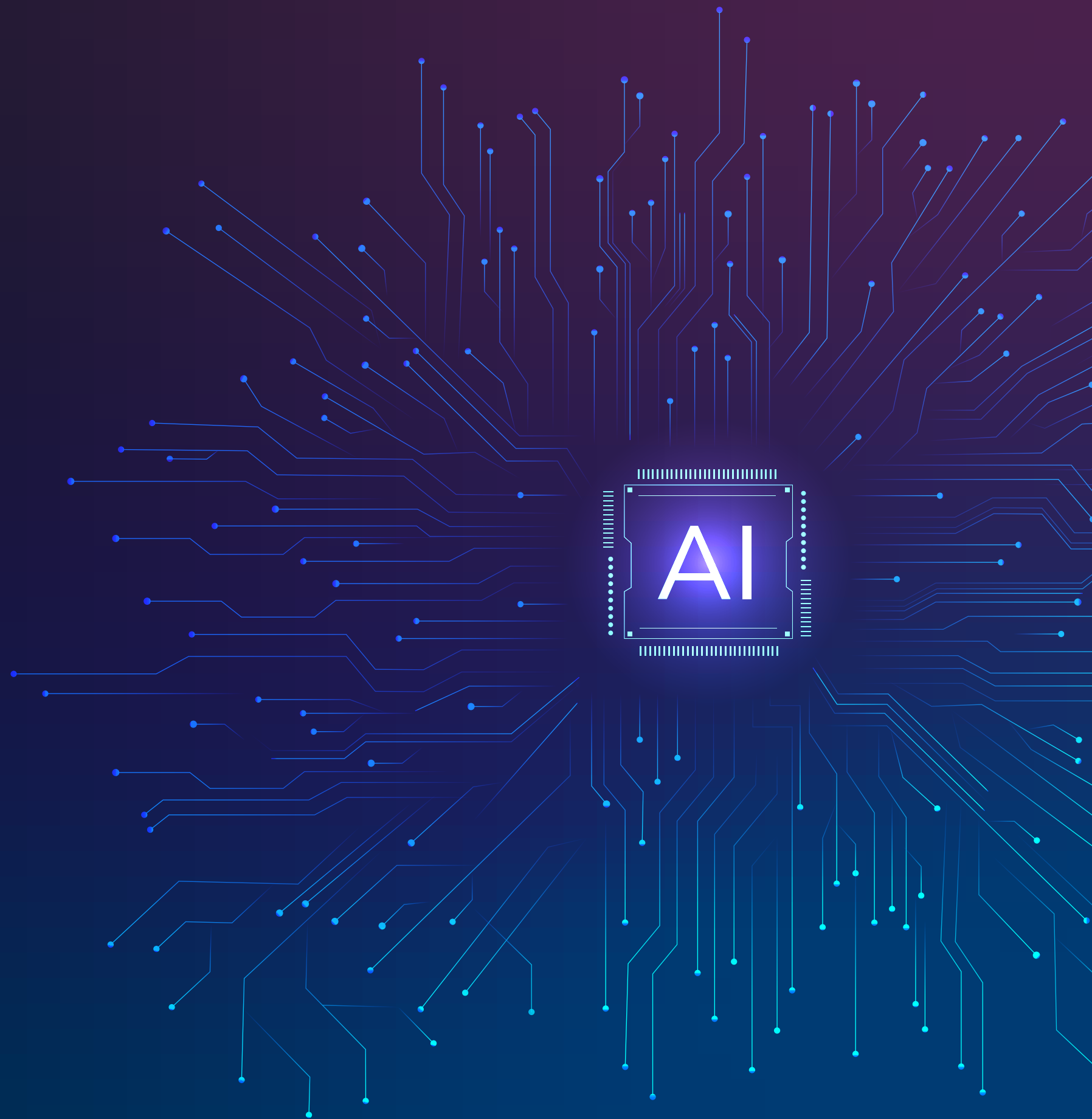
OUR PRODUCTS ARE COMPLIANT WITH GLOBAL STANDARDS



NEXUS



*All design Colors are indicative. Please refer to the actual products for exact colors.





WELSPUN GLOBAL BRAND LTD,
SURVEY NO. 190, CHANDANVELLY, NEAR HYTHABAD,
SHABAD MANDAL, RANGA REDDY (DIST),
TELANGANA 501 503
INDIA

Contact us:
1800 - 120 - 1161
India: contact_flooring@welspun.com
Global: global_saleswfl@welspun.com

www.welspunflooring.com



SCAN TO DOWNLOAD
E-LOOKBOOK