

HYPHA

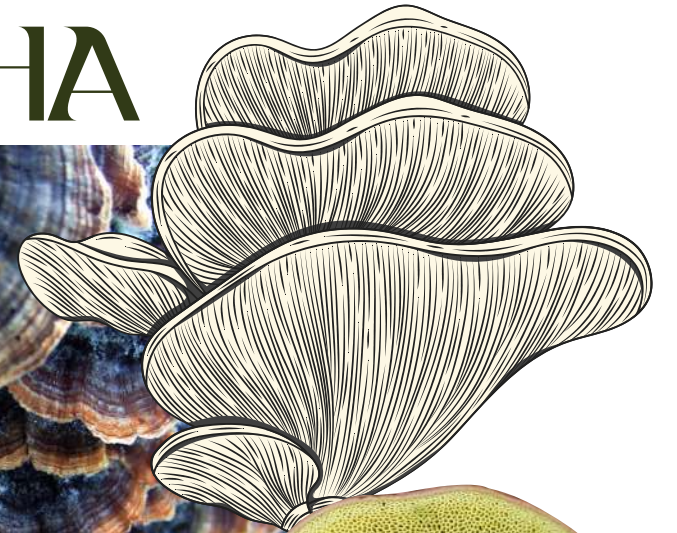
Nature's velvety elegance underfoot.

The Story

In the hidden depths of nature's sanctuary, we discovered our muse: the MYCELIUM, nature's intricate internet connecting all life. This inspiration blossomed into "HYPHA", our unique wall-to-wall carpet designs. The designs echo the silent language of trees and fungi, weaving a story of unity.

As you tread upon these carpets, you enter a world where every step resonates with the harmony of the wild. Hypha transforms spaces into a seamless tapestry of nature, inviting you to experience the essence of the wood wide web, connecting your space to the heart of the wilderness.

HYPHA



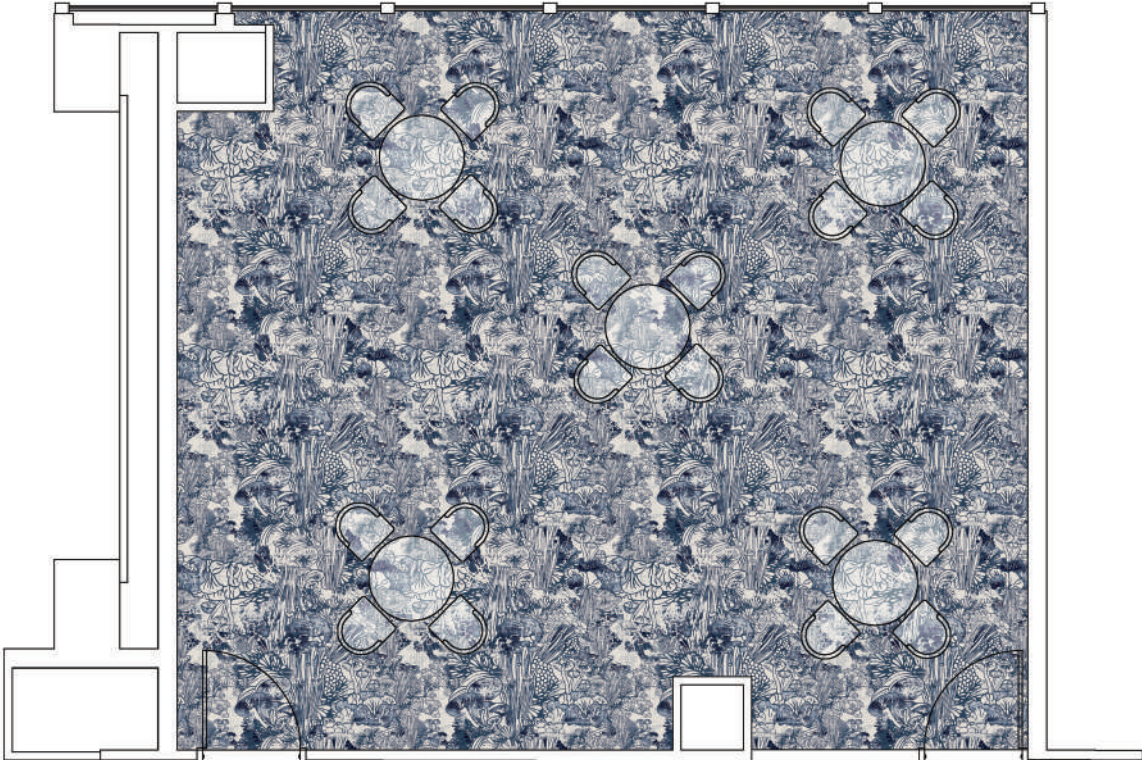


BOURGEON | WA6651

*Colors are indicative. Please refer actual products for exact color.

BOURGEON

WA6651-002 | 2 X 2 MTRS



WA6651-001



WA6651-003

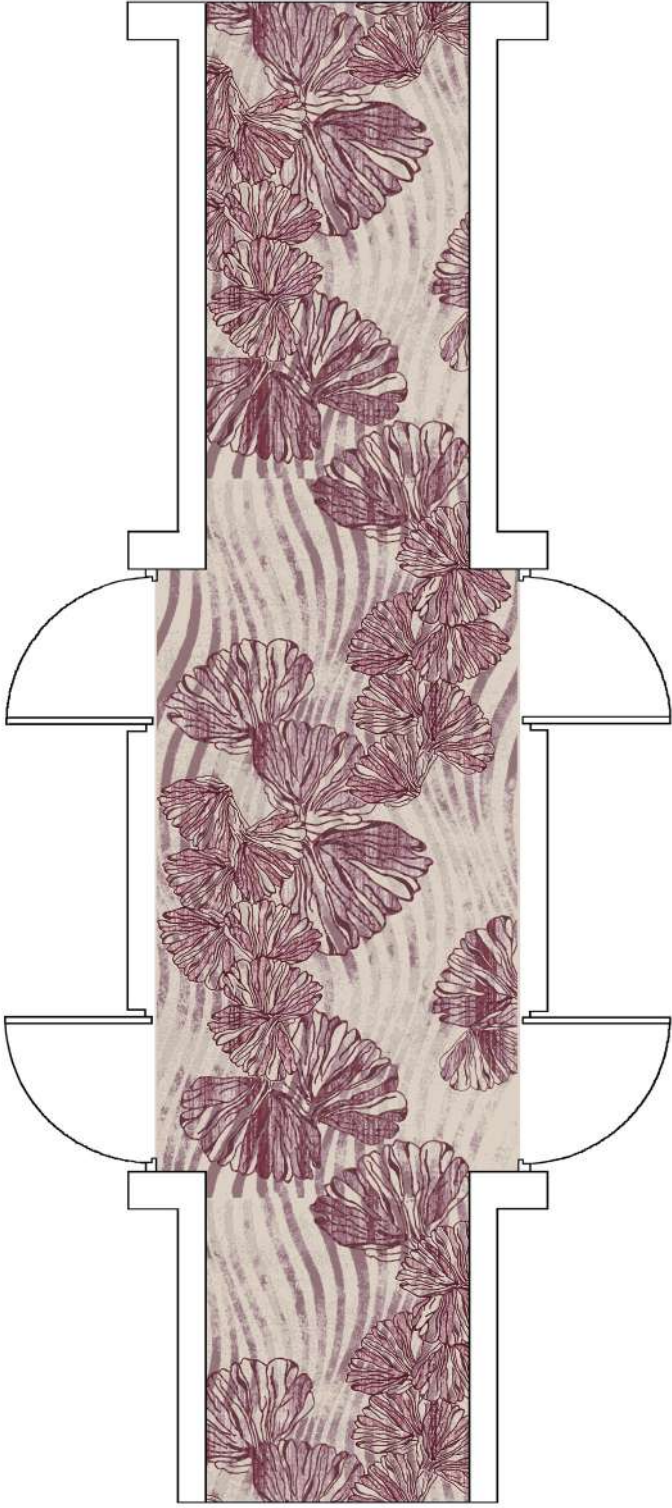


WA6651-004



NATURELLE

WA6652-003 | 2 X 2 MTRS



WA6652-001



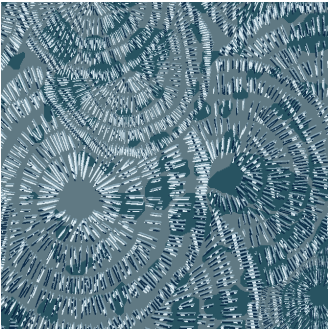
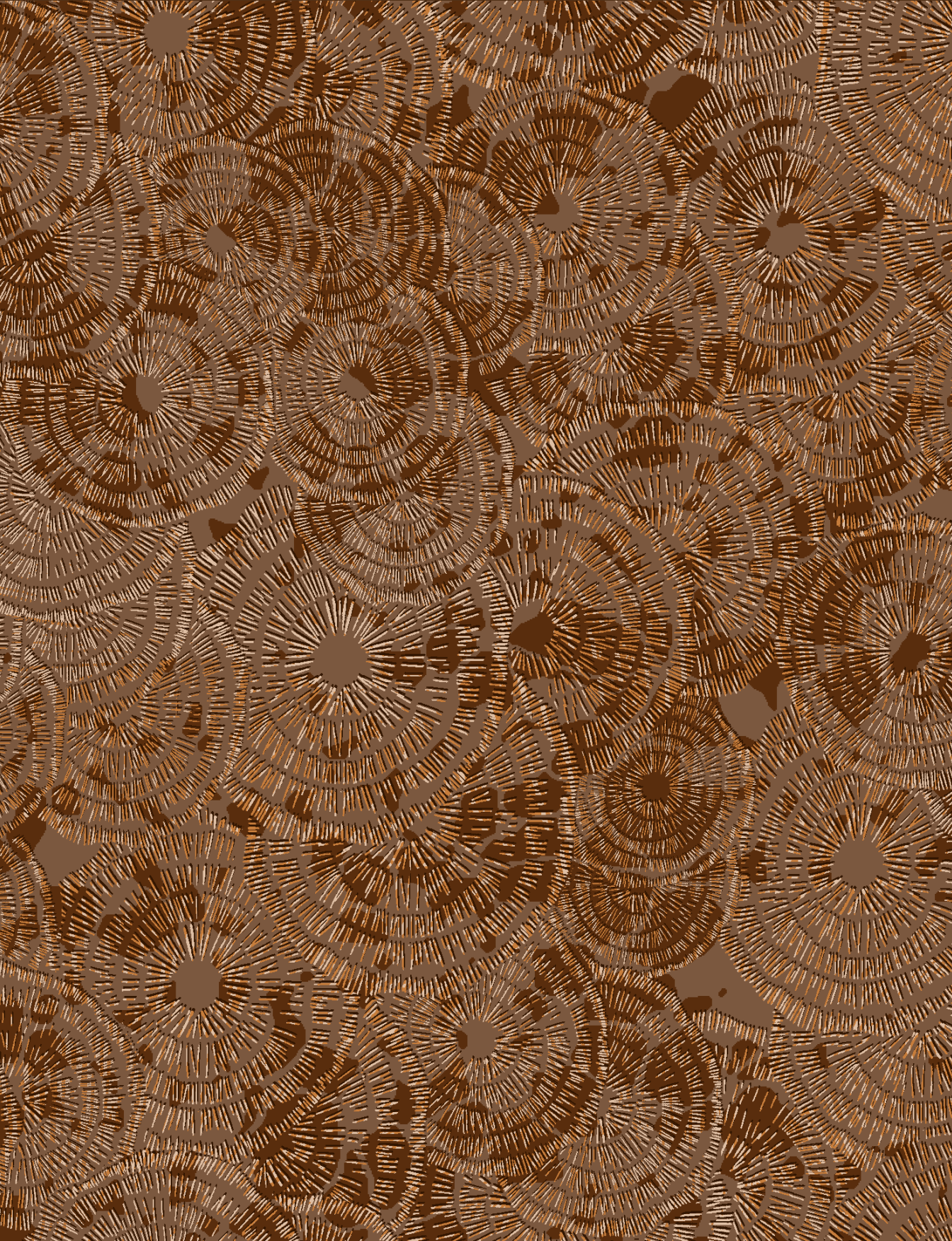
WA6652-003



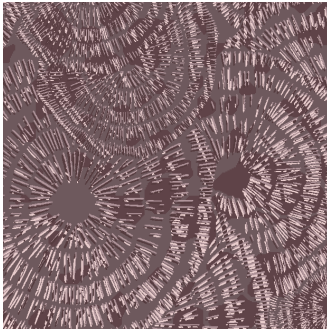
WA6652-004

SPAWNING

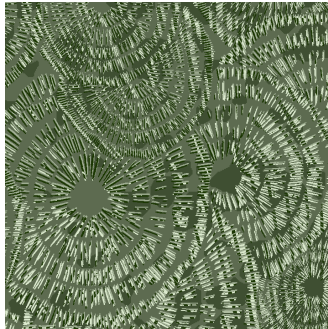
WA6653-001 | 2 X 2 MTRS



WA6653-002



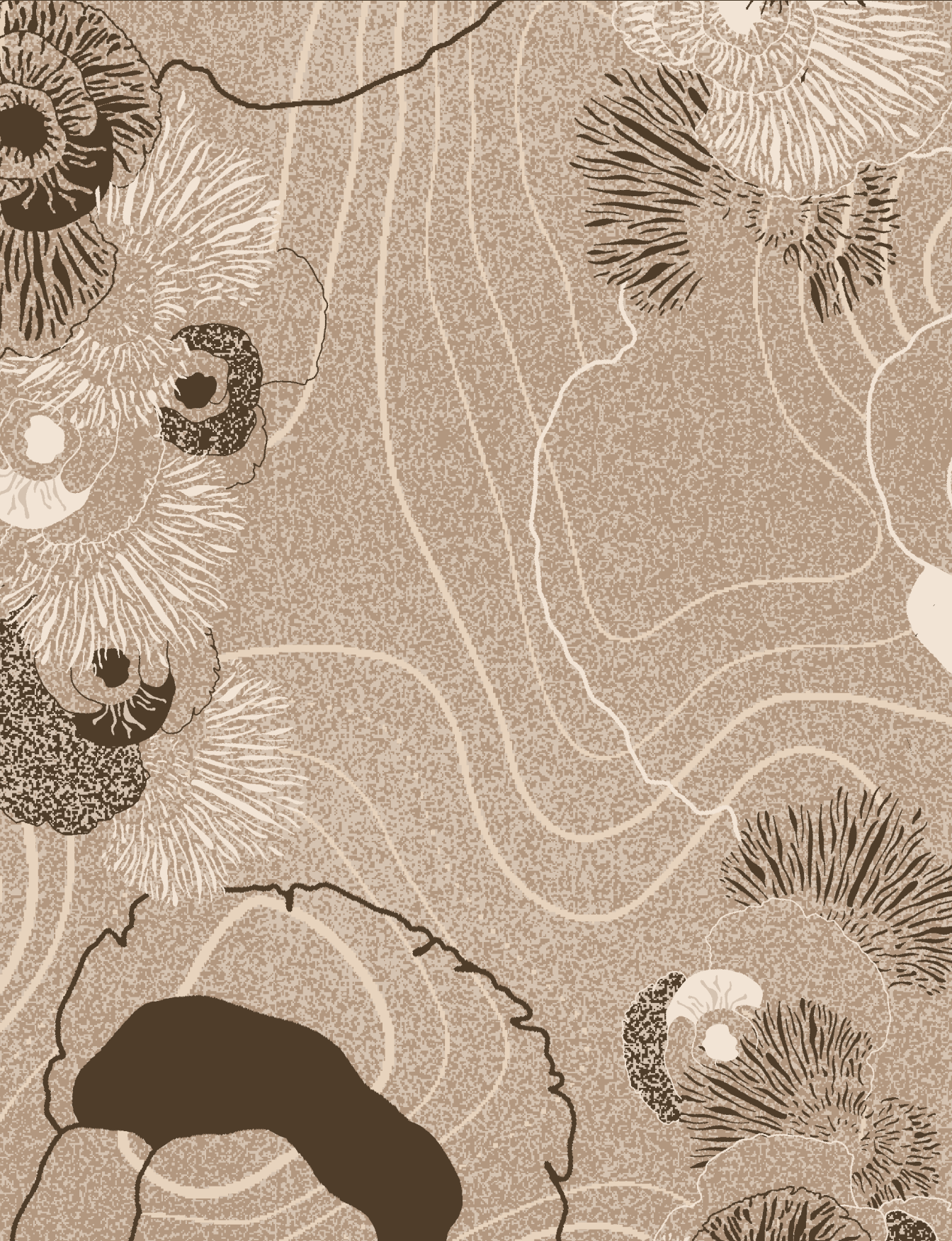
WA6653-003



WA6653-004

BLOOM

WA6654-001 | 2 X 4 MTRS



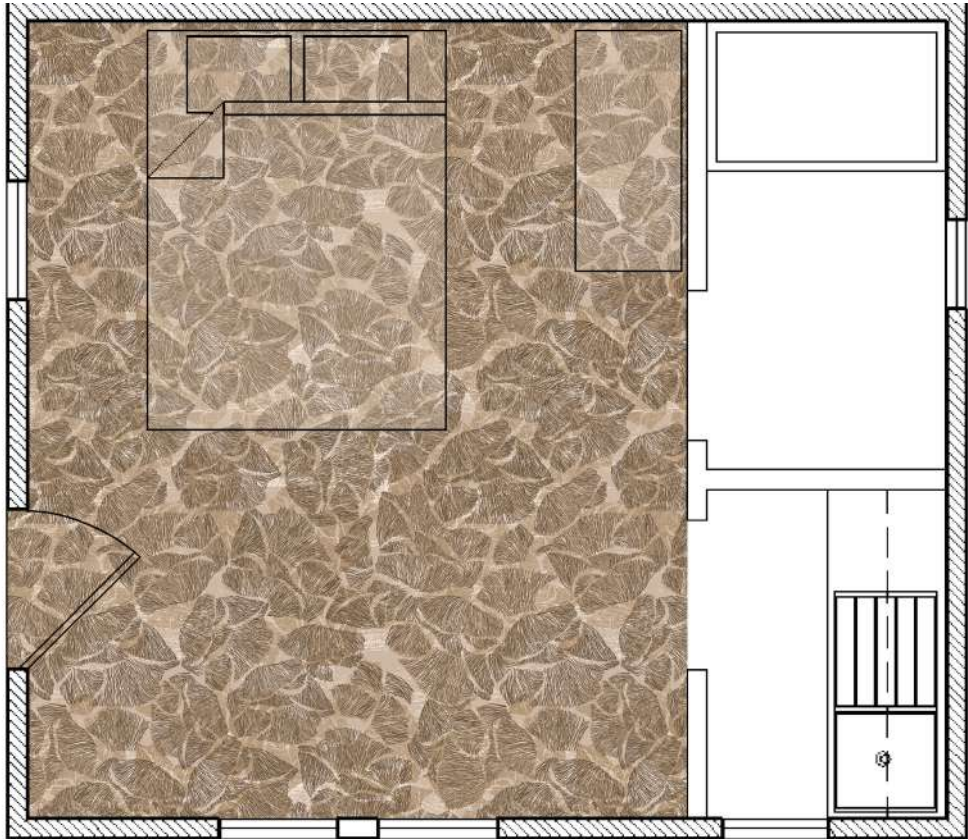
WA6654-002



WA6654-003



WA6654-004



WA6655-002



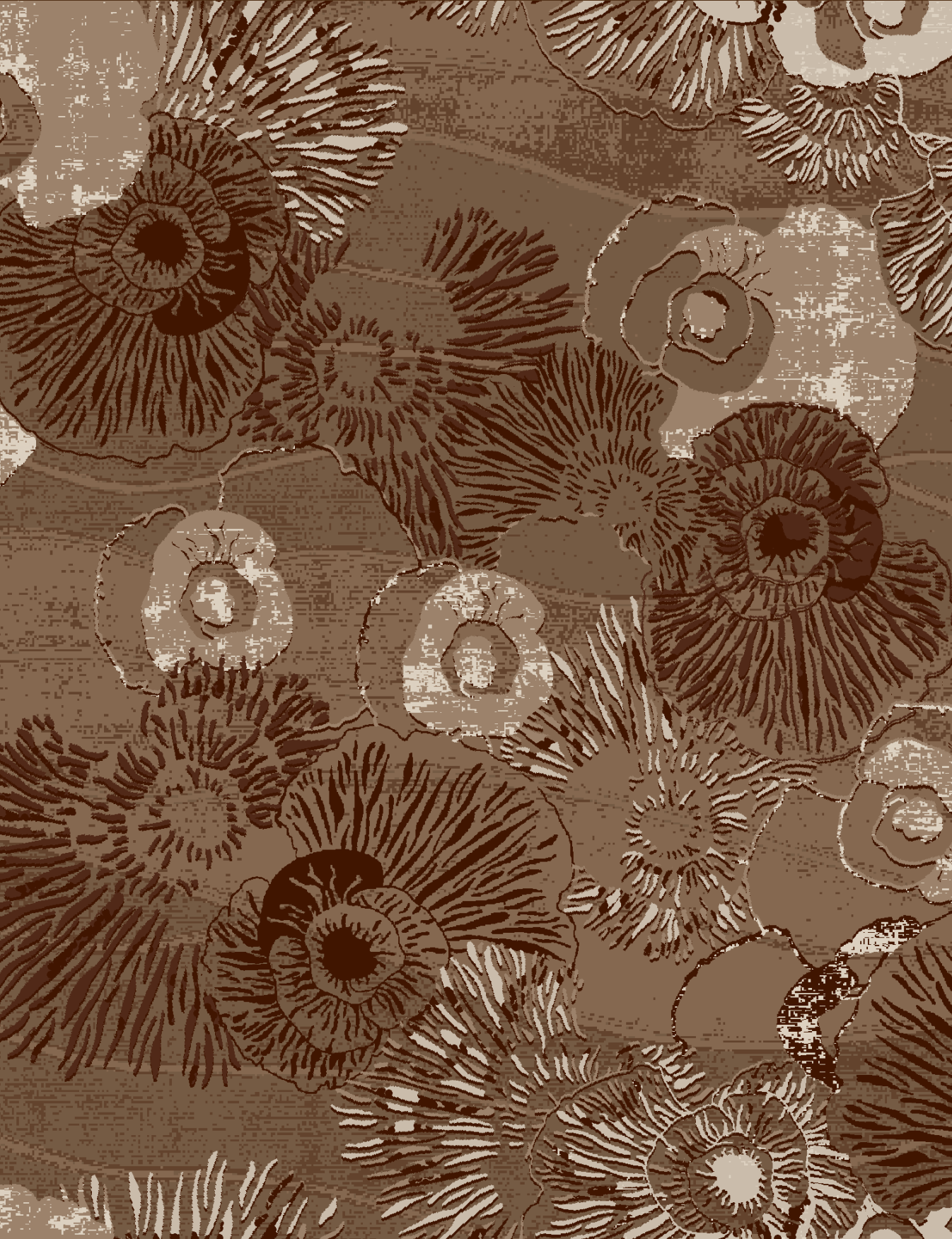
WA6655-003



WA6655-004

MYCELIUM

WA6656-001 | 2 X 2 MTRS



WA6656-002



WA6656-003



WA6656-004

RUGOSE

WA6657-004 | 2 X 4 MTRS



WA6657-001



WA6657-002



WA6657-003



FOLIAGE

WA6658-002 | 2 X 4 MTRS



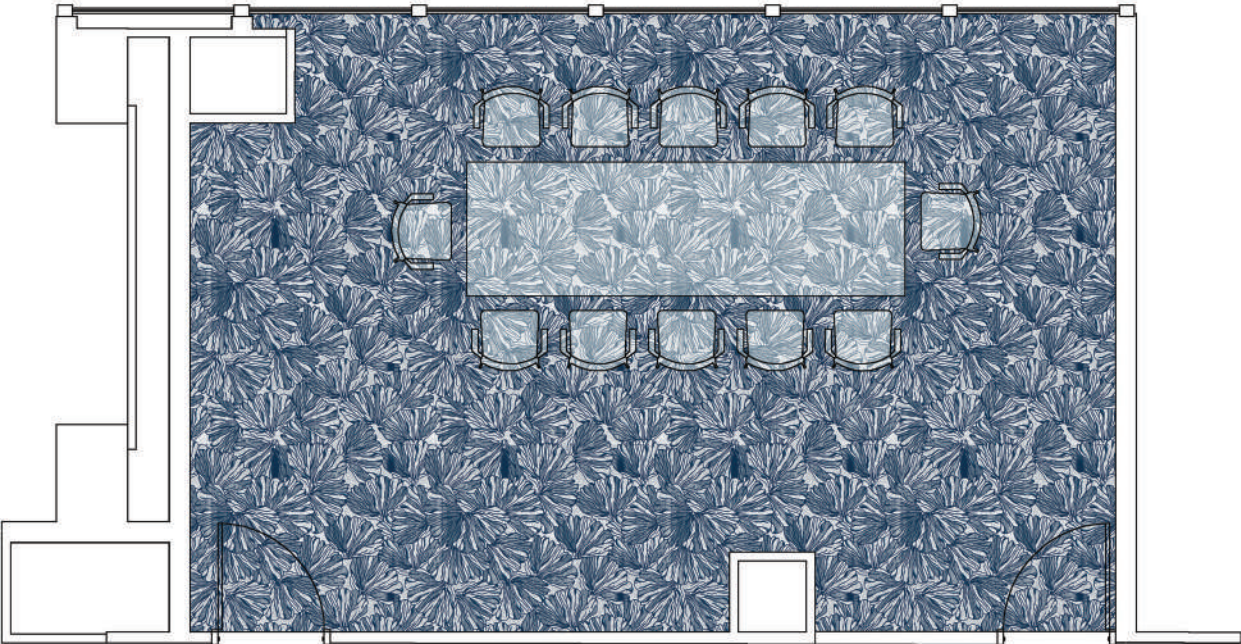
WA6658-001



WA6658-003



WA6658-004



WA6659-001



WA6659-003

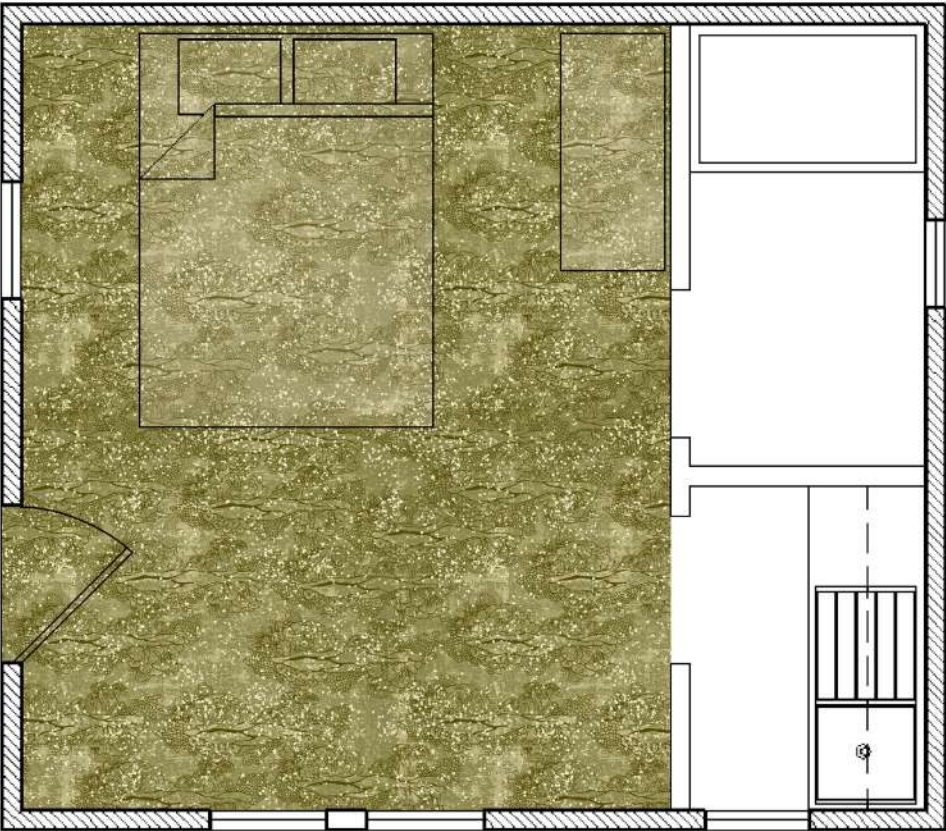
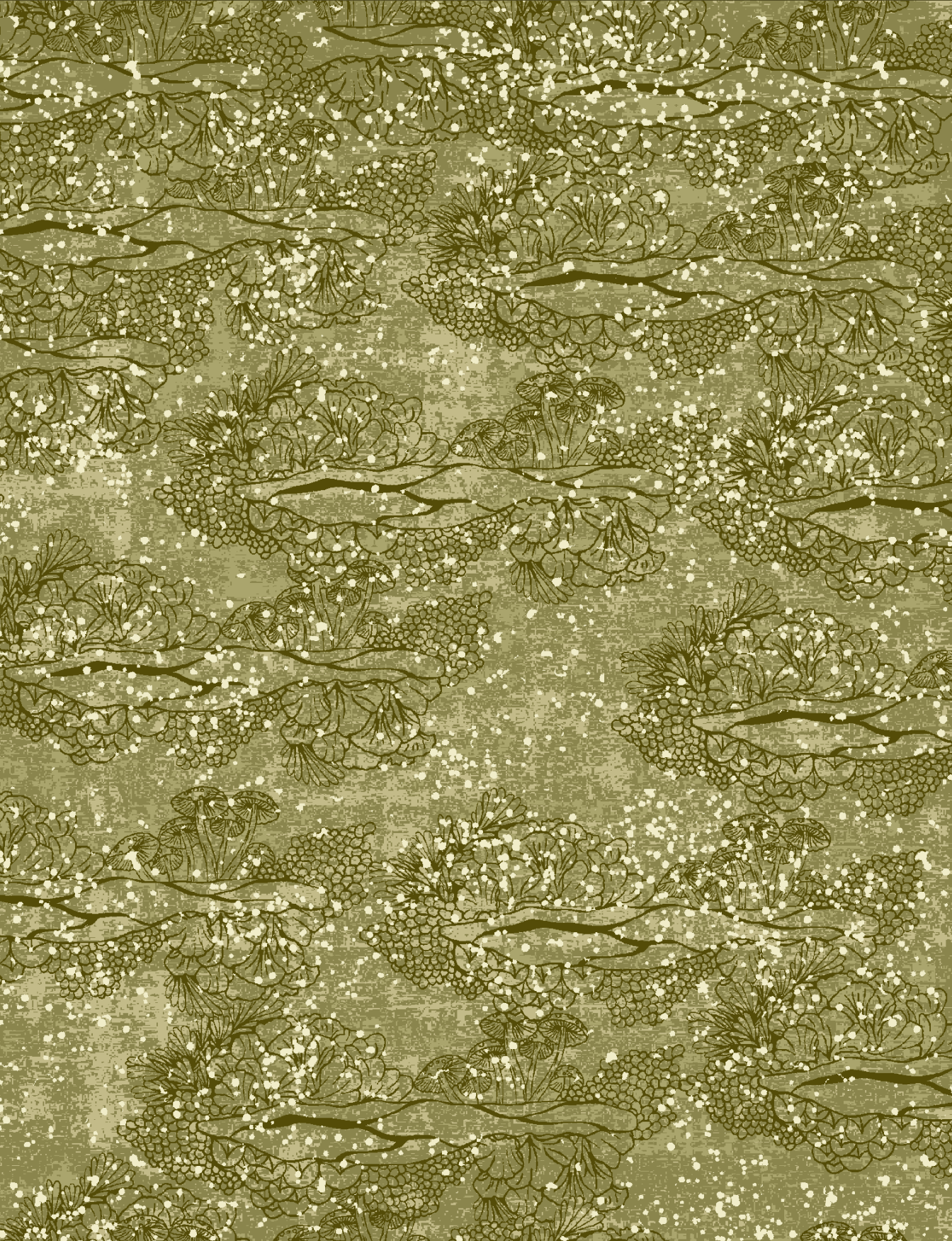


WA6659-004

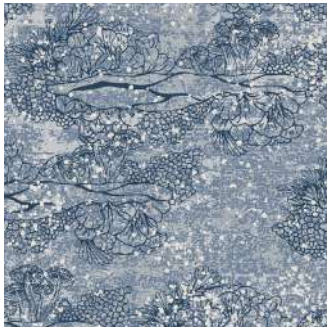


FLOURISH

WA6660-003 | 2 X 2 MTRS



WA6660-001



WA6660-002



WA6660-004

PRODUCT SPECIFICATION

Fiber	100% Polyamide 6
Product Type	Cut & Loop
Pile (GSM)	590 to 1500
Total (GSM)	1776 to 2686
Pile Height (mm)	7 to 10
Tufting Type	1/8 & 1/10
Indicates	+/- 5%

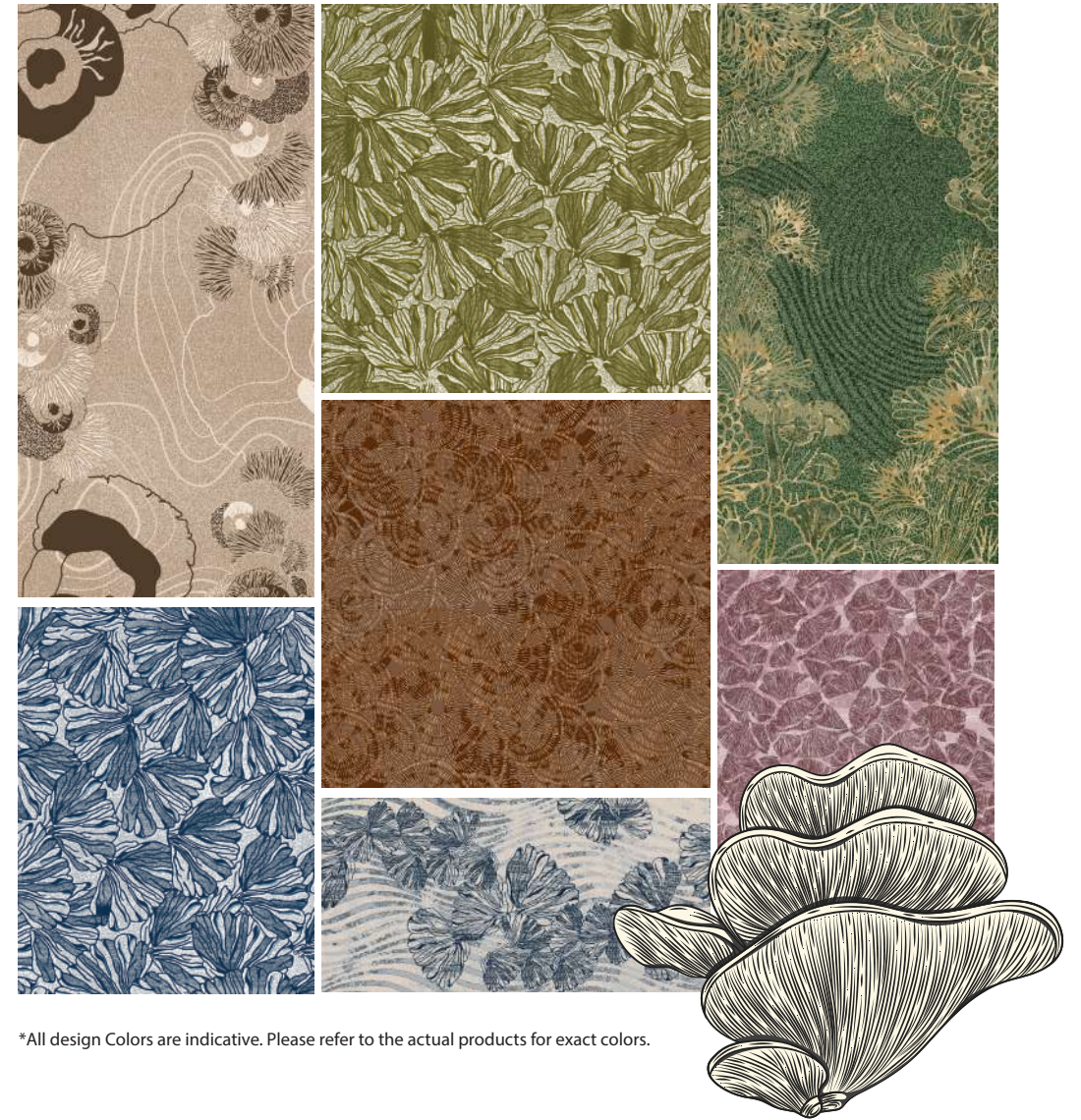
TEST REPORT SUMMARY

Test Name	Method	Test Name	Method
Anti Microbial Treatment	AATCC 174 (Part II & III)	Flammability (Pill Test)	ASTM D 2859
Delamination	ASTM D 3936	Flammability (Radiant Panel)	ASTM E 648-06
Tuft Bind	ASTM 1335-67	NBS Smoke Density (Flaming)	ASTM E 662-06
Castor Chair	DIN 54324	Lightfastness	AATCC 16 E
Pile weight	ASTM D 5848-07	Colour fastness to Ozone	AATCC 129
Pile density	ASTM D 5848-07	Colour fastness to NO ₂	AATCC 164-2008
Hexapod	ASTM D 5252-15	Crocking Dry and Wet	AATCC 165-2008
Pile height	ASTM D 5823-05a	Stain fastness	AATCC 175-2008/ITTS 002
Gauge	ASTM D 5793-13	Shampoo Fastness	AATCC 138
Static Electricity	AATCC 134-1996	Water Fastness	AATCC 107
Green Carpet (VOC)	ASTM D 5116		

OUR PRODUCTS ARE COMPLIANT WITH GLOBAL STANDARDS



HYPHA



*All design Colors are indicative. Please refer to the actual products for exact colors.





WELSPUN GLOBAL BRAND LTD,
SURVEY NO. 190, CHANDANVELLY, NEAR HYTHABAD,
SHABAD MANDAL, RANGA REDDY (DIST),
TELANGANA 501 503
INDIA

Contact us:

1800 - 120 - 1161

India: contact_flooring@welspun.com

Global: global_saleswfl@welspun.com

www.welspunflooring.com