

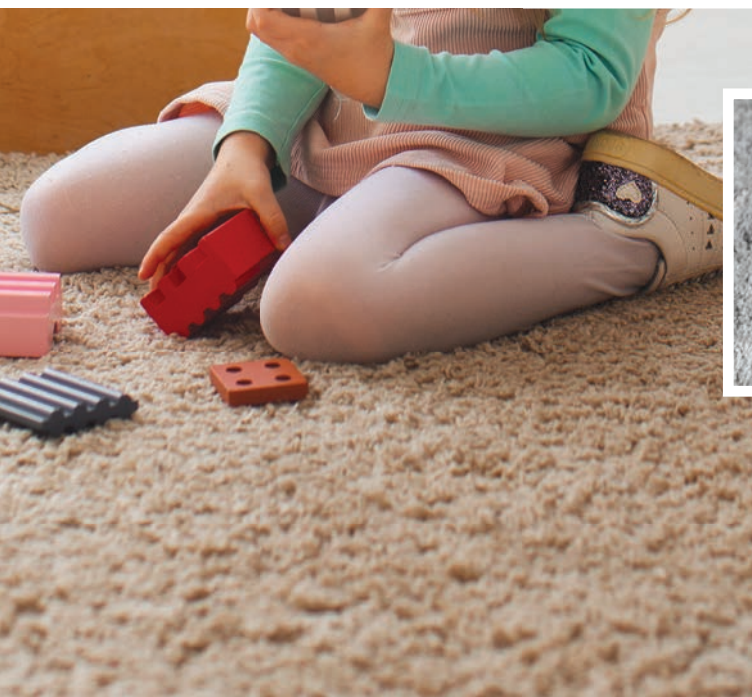
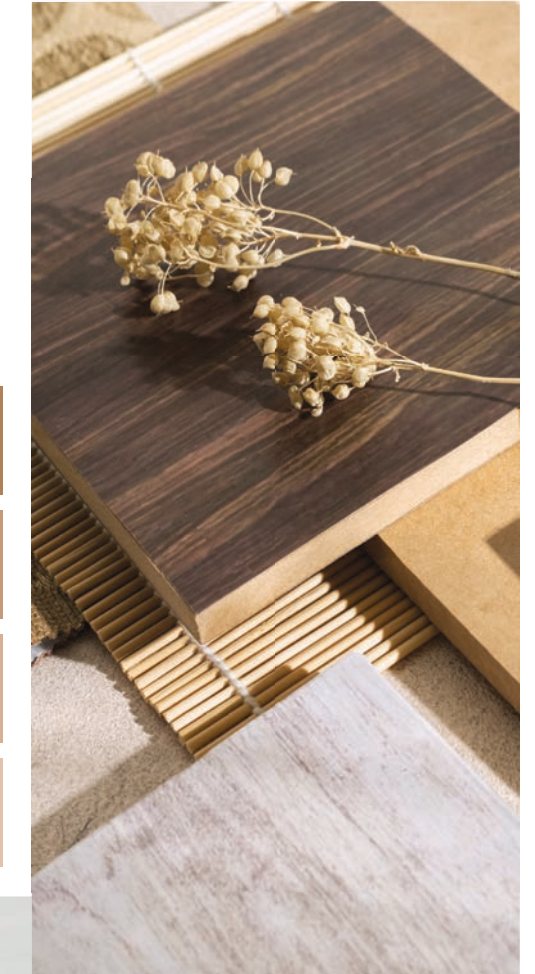


Saratoga

Simplicity is the ultimate sophistication.

A touch so gentle, a comfort so lasting.

Designed for effortless living, Saratoga resists stains, withstands daily wear, and retains its elegance over time—so you can enjoy comfort without compromise.

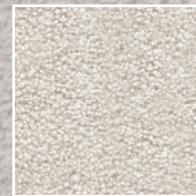


Your home deserves a foundation that feels as good as it looks. Saratoga blends plush softness with lasting strength, creating a warm and inviting space for every step, every moment, every room. Whether it's a cozy bedroom retreat, a lively family space, or a playful nook for little feet, Saratoga offers the perfect balance of comfort and durability, making every corner of your home effortlessly welcoming.

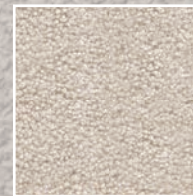
Saratoga

Colourways

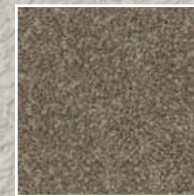
Every hue in the Saratoga collection is thoughtfully curated to complement your space, blending warmth, elegance, and versatility. From soft neutrals that create a serene retreat to rich, inviting tones that add depth and character, each shade is designed to enhance your home's ambiance.



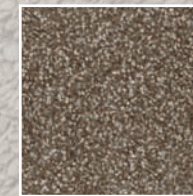
BRIDLEMIST



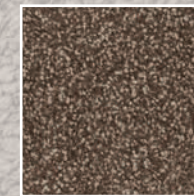
HAYDUST



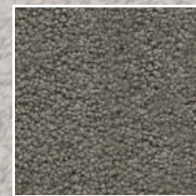
HARVEST



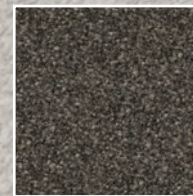
BISCAYNE



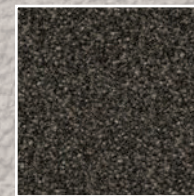
TIMBERLINE



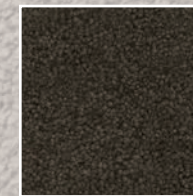
HEARTMIST



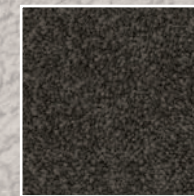
BURROWOOD



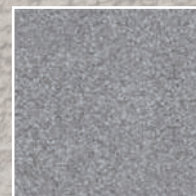
STABLEWOOD



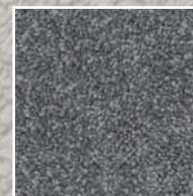
CAVERN



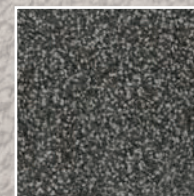
PINECREST



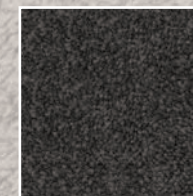
FROSTWICK



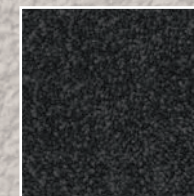
STILLWATER



CLAYBROOK



STONEGATE



SHADOWMERE



BRIDLEMIST

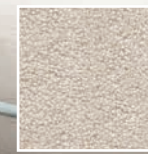


Designed
for life, built to last.

This image is used for illustration purpose only. The actual product appearance may vary.



HAYDUST

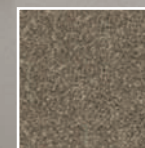


Elegance
woven into every thread.

This images is used for illustration purpose only. The actual product appearance may vary.



HARVEST



Transform
your space, elevate your
experience.

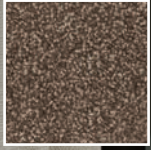
BISCAYNE



Luxury you can feel,
comfort you can trust.

This images is used for illustration purpose only. The actual product appearance may vary.

TIMBERLINE

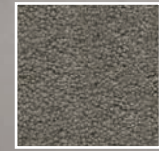


Timeless beauty,
redefined comfort.

This images is used for illustration purpose only. The actual product appearance may vary.



HEARTHMIST



A perfect
place for play, rest,
and memories.

This images is used for illustration purpose only. The actual product appearance may vary.

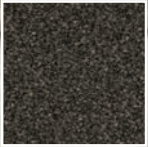
BURROWOOD



A canvas
of warmth and sophistication.



STABLEWOOD



Every step,
wrapped in softness.

This images is used for illustration purpose only. The actual product appearance may vary.



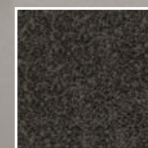
CAVERN



Built for joyful times,
both big and small.



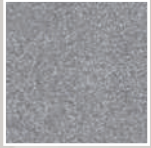
PINECREST



Grace meets
resilience in every fiber.

This image is used for illustration purpose only. The actual product appearance may vary.

FROSTWICK

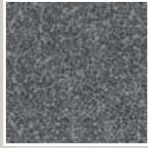


Home begins
where comfort meets care.



This image is used for illustration purpose only. The actual product appearance may vary.

STILLWATER

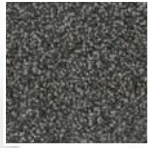


Soft underfoot,
strong in endurance.



This image is used for illustration purpose only. The actual product appearance may vary.

CLAYBROOK

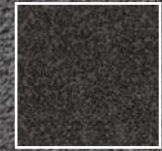


A foundation
of strength for your home.





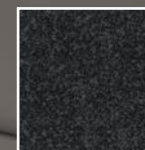
STONEGATE



Elegance that
withstands the test time.

This images is used for illustration purpose only. The actual product appearance may vary.

SHADOWMERE



Style that speaks,
comfort that lasts.

This images is used for illustration purpose only. The actual product appearance may vary.

FEATURES



PRODUCT SPECIFICATIONS IN CARPET TILES

- Machine Gauge 3/16 Cut Pile
- Tufting Weight* 43 / 53 / 63 Oz
- Yarn PET
- Backing System PP Mesh
- Pile Height* 12 / 15 / 18 mm
- Total Thickness* 14 / 17 / 20 mm
- Density* (Tuft/sqm) 117600

*Indicates +/-5%

LIMITED WARRANTIES

- Lifetime Stain Resistance Warranty
- Lifetime Fade Resistance Warranty
- 15 Year Limited Texture Resistance Warranty
- 15 Year Limited Abrasive Wear Warranty
- 15 Year Limited Pet Urine Stain & Odour Resistance Warranty

CERTIFICATIONS



Address :

Welspun Global Brands Ltd, Survey No 190, Chandanvelly, Near Hythabad, Shabad Mandal, Ranga Reddy District, Telangana 501503, India

Contact us :

Email: global_saleswfl@welspun.com

Website: www.welspunliving.com